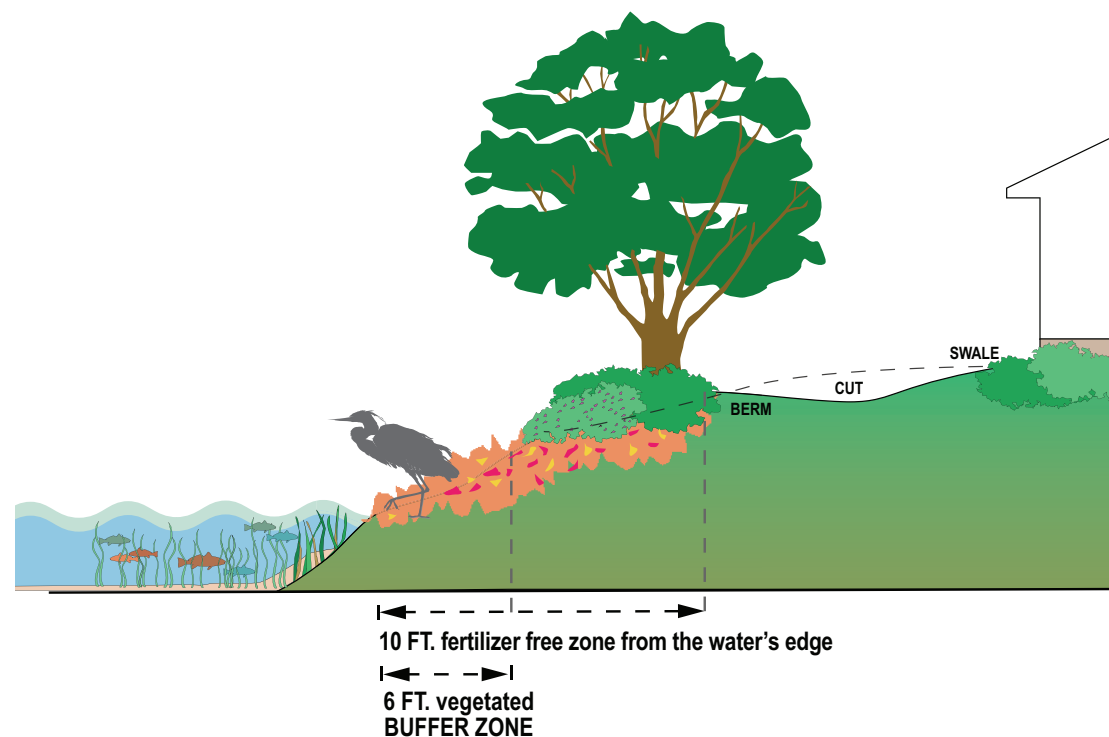
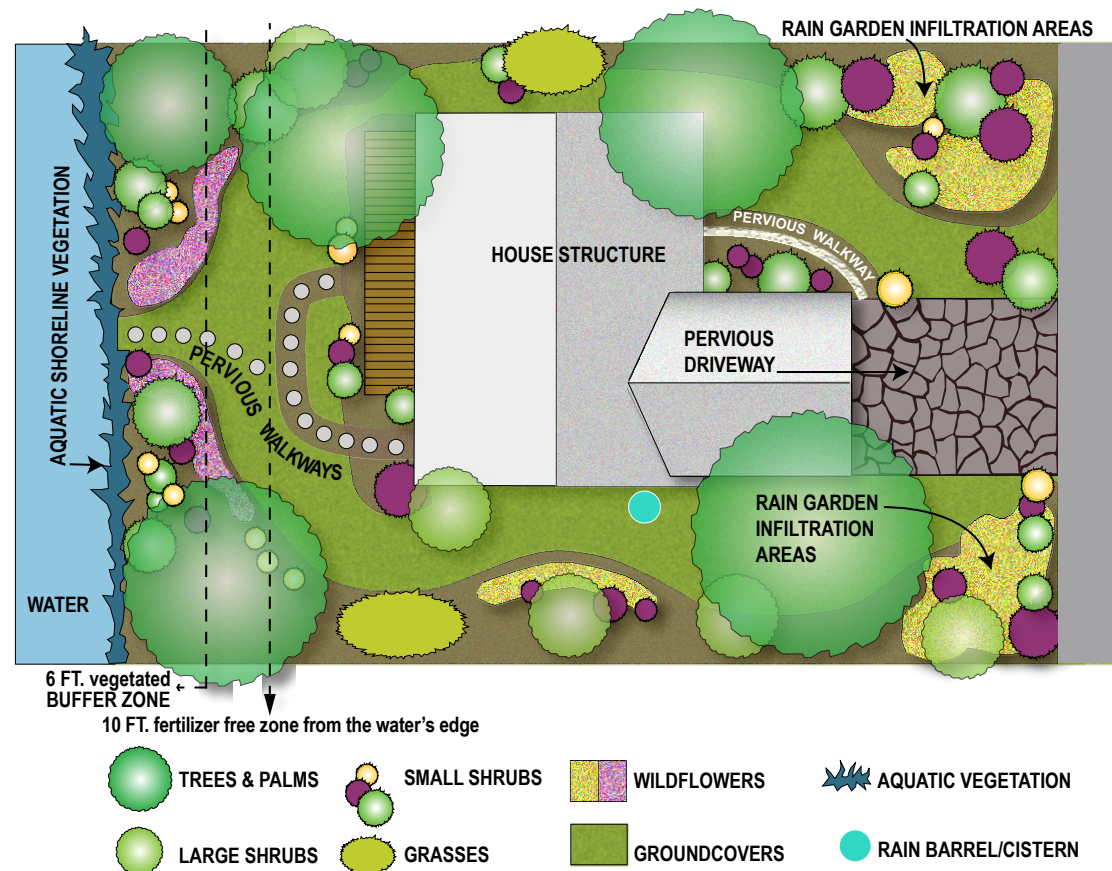


Earth Shaping to Prevent Runoff



Example of a Bay-Friendly Landscape



Shoreline Buffer Zone Alternatives

Sarasota County Fertilizer and Landscape Management Code, Ordinance 2007-062

Living on the water's edge is a beautiful and special place to live. This brochure provides a landscape example with a sampling of plants that could be used in the required (10 feet) fertilizer free zone and (6 feet or greater) recommended low maintenance (no irrigation or fertilizer after establishment) vegetated buffer zone along the waterfront. These plants may be used as an alternative to or in combination with an existing turf grass buffer. The plants were selected as an example to provide an attractive, drought tolerant, bay-friendly, commercially available way to beautify the landscape while controlling erosion and reducing the amount of nutrients, fertilizer and pesticides entering our waterways.

Remember, no matter where you live, your yard is connected to the bay and Gulf through a series of ponds, canals and creeks.

For more information on additional shoreline plants or regulations, contact

Sarasota Bay Estuary Program
www.sarasotabay.org 941.955.8085

Florida Native Plant Society
www.fnps.org 321.271.6702

Florida Yards & Neighborhoods
www.FloridaYards.org 941.861.5000

Association of Native Plant Nurseries
www.afnn.org 877.352.2366

Sarasota County
www.scgov.net 941.861.5000

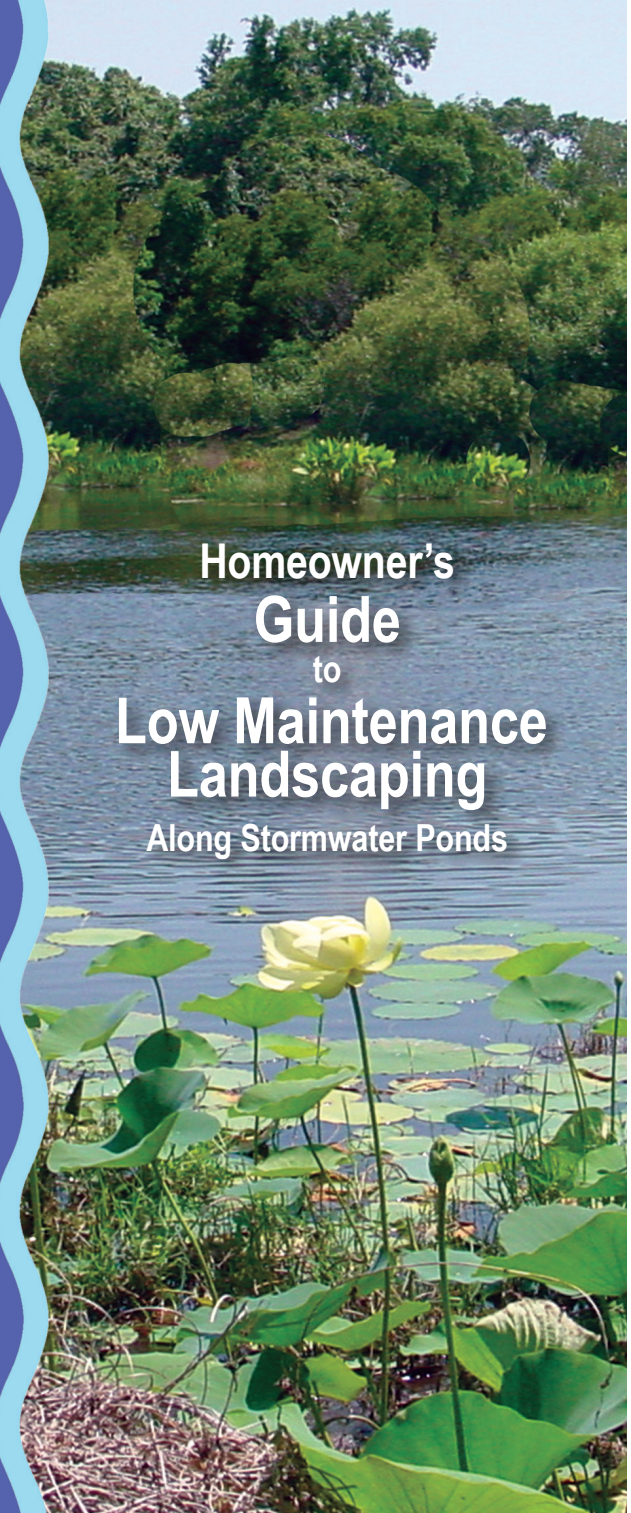
UF/IFAS Sarasota County Extension Service
<http://sarasota.extension.ufl.edu> 941.861.5000

Southwest Florida Water Management District
www.WaterMatters.org 352.796.7211

Florida Wildflower Foundation
www.floridawildflowercouncil.org 407.353.6164



LIVING on the WATER'S EDGE



Homeowner's Guide to Low Maintenance Landscaping Along Stormwater Ponds

PLANT CATEGORIES — Low Maintenance Plants for Landscaping the Buffer Zone Along Your Shoreline

AQUATIC



Alligator flag
Thalia geniculata
6'- 9' ht. x 6'- 9'w.



Dixie Iris
Iris hexagona
4' ht. x 3'- 5'w.



Duck potato
Sagittaria lancifolia
4' ht. x 4'w.



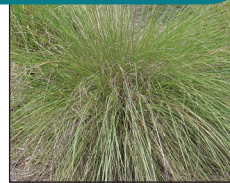
Pickerel weed
Pontederia cordata
3.5' ht. x 3.5'w.



White pond lily
Nymphaea odorata
1'- 6' ht. x 4'- 6'w.



GRASSES & RUSHES



Cordgrass
Spartina bakeri
4'- 6' ht. x 4'- 6'w.



Fakahatchee grass
Tripsacum dactyloides
5' ht. x 4' w.



Muhly grass
Muhlenbergia capillaris
3' ht. x 3' w.



Soft rush
Juncus effusus
3' ht. x 3'w.



Soft stem bulrush
Schoenoplectus tabernaemontani
8' ht., spreads



GROUNDCOVERS



Frog flower (Matchstick)
Phyla nodiflora
1"- 4" ht., spreads



Perennial peanut
Arachis glabrata
Not Native - Turf replacement
1"- 3" ht., spreads



Sunshine mimosa
Mimosa strigillosa
Turf Replacement
1"- 3" ht., spreads



Blue eyed grass
Sisyrinchium angustifolium
2' ht. x 1'-2'w.



Bacopa
Bacopa spp.
2' ht. x 1'-2'w.



WILDFLOWERS



Tropical sage
Salvia coccinea
1'- 2' ht.



Black-eyed susan
Rudbeckia hirta or
Rudbeckia nitida
3' ht. x 3' w.



Blanket flower
Gaillardia pulchella
1' ht. x 2'- 3' w.



Common tickseed
Coreopsis leavenworthii
1'- 3' ht. x 1'- 3' w.



Milkweed
Asclepias spp.
2'- 4' ht. x 1' w.



SMALL SHRUBS



Beautyberry
Callicarpa americana
4'- 6' ht. x 4'- 6' w.



Coontie
Zamia floridana
2'- 4' ht. x 2'- 4' w.



Swamp Hibiscus
Hibiscus coccineus
7' ht.



Spider lily
Hymenocallis palmeri
3' ht. x 3' w.



Wild coffee
Psychotria nervosa
4'- 10' ht. x 4'- 6' w.



LARGE SHRUBS



Buttonbush
Cephalanthus occidentalis
20' ht. x 10' w.



Giant leather fern
Acrostichum danaeifolium
12' ht. x 12' w.



Firebush
Hamelia patens
5'- 15' ht.



Walter's viburnum
Viburnum obovatum
12'- 20' ht.



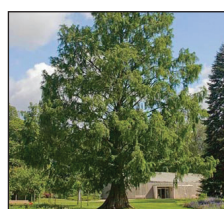
Wax myrtle
Myrica cerifera
25' ht. x 10' w.



TREES & PALMS



Cabbage palm
Sabal palmetto
15'- 60' ht.



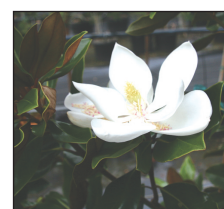
Cypress
Taxodium distichum
45'- 130' ht.



Dahoon holly
Ilex cassine
30' ht.



Red maple
Acer rubrum
35'- 90' ht.



Sweet bay magnolia
Magnolia virginiana
40'- 60' ht.



KEY TO SYMBOLS:

SOIL MOISTURE:

☀ Dry ☔ Wet Sometimes ☔ Wet All the Time

SUN LIGHT:

☀ Full ☔ Partial ● Shade

ATTRACTS WILDLIFE: 🐦

ATTRACTS BUTTERFLIES: 🦋

POND LIFE: 🐸