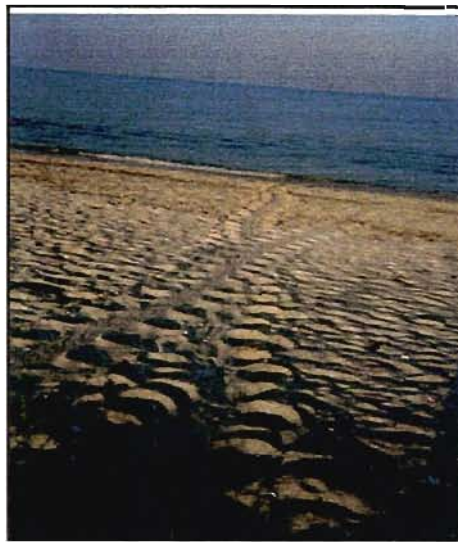


SEA TURTLE MONITORING VENICE BEACH

SUMMARY REPORT FOR 2000
SEA TURTLE PERMIT #028



SUBMITTED TO:
THE CITY OF VENICE
Engineering Department ~ 401 W. Venice Avenue, Venice FL 34285

SUBMITTED BY:
MOTE MARINE LABORATORY
1600 Thompson Parkway ~ Sarasota FL 34236
Jerris J. Foote, Principal Investigator
Tracey Mueller, Staff Biologist and Jay Sprinkel, Senior Biologist



SUBMITTED ON:
December 29, 2000

TABLE OF CONTENTS

	<u>Page No.</u>
TABLE OF CONTENTS	i
LIST OF FIGURES	ii
LIST OF TABLES	ii
INTRODUCTION	1
MARINE TURTLE MONITORING	2
Location	2
PROCEDURES	2
Daily Monitoring	2
Hatching Surveys and Nest Evaluation	4
Data Analysis	6
RESULTS AND DISCUSSION	6
Turtle Emergences (Nests & Non-nesting emergences)	6
Cross-Shore Nest Position	7
Nest Damage	10
Incubation	12
Nest Success Evaluation	12
Emergence Success Evaluation	13
Hatchling Disorientation Events	13
Marine Turtle Strandings	14
CONCLUSIONS	15
ACKNOWLEDGMENTS	16
REFERENCES	16

LIST OF FIGURES

Page No.

Figure 1. Map of Venice Showing: FDEP Survey Profile Monuments MML Turtle Monitoring Zones.	3
Figure 2. Sign marking protected sea turtle nests.	5
Figure 3. Marine turtle emergences for the entire Venice shoreline located by FDEP monument - 2000.	8
Figure 4. Seasonal pattern of marine turtle emergences for the entire Venice shoreline - 2000.	9

LIST OF TABLES

Table 1. Nest to false crawl ratio for marine turtles nesting on Venice beaches (R-115 to R-138), 1991 through 2000.	7
Table 2. Nest locations by relative beach width using visual classification regardless of actual beach width for the Venice shoreline (n=273).	9
Table 3. Nest locations measured upland from the daily Mean High Water Line (N=271) ...	10
Table 4. Nests documented as experiencing either partial or complete damage not including disorientation events (n=88).	10
Table 5. Success of nests experiencing inundation (n=52).	11
Table 6. Hatch success for evaluated nests, relocated and <i>in situ</i> (<i>i.e.</i> , not relocated).	13
Table 7. Hatchling emergence success for relocated versus <i>in situ</i> nests.	13
Table 8. Summary of Year 2000 marine turtle hatchling disorientation events for Venice beaches (n=12).	14
Appendix A: FWCC Marine Turtle Permit #028 for the Year 2000 ~ Mote Marine Laboratory	20
Appendix B: Mote Marine Laboratory Nest & Non-nesting Emergence (false crawl) Data Sheets	23
Appendix C: Marine Turtle Nest and Non-nesting Emergence Activity (R-115 to R-138) ~ Venice, FL	26
Appendix D: FWCC Nesting Survey and Nest Success Reporting Forms for 2000 ~ Venice, FL	46
Appendix E: Marine Turtle Hatchling Disorientation Incident Reports	49
Appendix F: Sea Turtle Stranding and Salvage Network - Stranding Reports	75

INTRODUCTION

The Gulf of Mexico shoreline of Venice, Sarasota County, Florida is utilized as nesting habitat by loggerhead (*Caretta caretta*) and green (*Chelonia mydas*) sea turtles. Both species are protected under the federal Endangered Species Act of 1973, State of Florida Statutes (Section 161.163), the Sarasota County Sea Turtle Protection Ordinance No. 97-082 and City of Venice Ordinance No. 95-07 which amends Ordinance No. 1307-88. The green turtle is listed as endangered in Florida and on the Pacific coast of Mexico and is listed in Appendix I of the Convention on International Trade in Endangered Species of Flora and Fauna (CITES). The loggerhead was listed in 1978, as a threatened species. Internationally it is considered "Vulnerable" and is listed in Appendix I (CITES).

In addition to the above, juvenile Kemp's ridley (*Lepidochelys kempii*) and juvenile green turtles utilize the near-shore waters of the central Gulf coast of Florida as developmental habitat. The Kemp's ridley is the most critically endangered of all sea turtle species and as such is protected throughout its range (Gulf of Mexico and northwestern Atlantic Ocean).

Land based threats to these protected marine turtles include beach erosion, beach armoring, beach nourishment activities, artificial lighting, beach cleaning, increased human presence, recreational beach equipment, exotic dune and beach vegetation, nest depredation, nest loss to abiotic factors and, poaching. Threats within the marine environment include, but are not limited to, dredging, marina and dock development, pollution, seagrass bed degradation, fisheries activities including hook and line fisheries, boat collisions, offshore artificial lighting, ingestion of marine debris, poaching and predation (NMFS/USFW, 1991).

To enable construction projects to occur on marine turtle nesting habitat, the Florida Fish and Wildlife Conservation Commission (FWCC), Division of Protected Species Management, and the National Marine Fisheries / U.S. Fish and Wildlife Service request that data be made available pertaining to the species of marine turtles utilizing the habitat, the nest success, and any protection measures undertaken to protect the adult turtle, the nest, and the emerging hatchlings.

The following is a summary of sea turtle monitoring, including nest protection measures, hatch success, and stranding incidents for Venice beaches for the year 2000.

MARINE TURTLE MONITORING

Location

Venice Beach is located in Sarasota County along the central gulf coast of Florida. The entire beach length is approximately 7.4 kilometers. Venice Inlet, at Florida Department of Environmental Protection's (FDEP) Coastal Construction Control Line Monument R-115, forms the northern terminus of Venice beach. The southern terminus is located at Monument R-138, located approximately 100 feet south of the southern most wooden ramp/walkover at Casperson Beach (**Figure 1**). The shoreline includes Venice Public Beach, Golden Beach, Sunset Beach, Brohard Beach and North Casperson Beach.

The shoreline from Venice Inlet (R-115) south to the north end of Brohard Beach (R-133) was restored (nourished) in two phases beginning in 1994 and ending in 1996. The Brohard Beach and Casperson Beach shoreline (R-133 to R-138) has not been restored and is herein after referred to as native or natural beach. The shoreline is characterized by high density development, both residential single and multifamily, and commercial development from Venice Inlet (R-115) south to Service Club Park (~650' S of R-128). From here south the area consists of undeveloped park with the exception of the Venice Fishing Pier, Sharky's Restaurant and parking lot, and the City of Venice Sewage Treatment Plant. This developed area is located from approximately 400 feet south of Monument R-130 to approximately 700 feet south of Monument T-131.

PROCEDURES

Daily Monitoring

Beginning May 1st daily early morning monitoring of Venice beaches was begun to fulfill the Florida Department of Environmental Protection guidelines for sea turtle protection and to fulfill the scope of work contracted by Mote Marine Laboratory (MML) with the City of Venice. Mote Marine Laboratory personnel and volunteer patrol personnel are permitted through Florida Fish and Wildlife Conservation Commission (FWCC) under the 2000 marine turtle permit #028 (**Appendix A**).

Monitoring for adult marine turtle nesting activity was conducted by personnel walking the shoreline above the mean high water line. Upon discovery of a marine turtle emergence FWCC permitted personnel visually determined whether the emergence was a nest or a non-nesting emergence (or false crawl). A non-nesting emergence (NNE) was defined as an emergence which did not result in egg deposition.

VENICE, FL SARASOTA CO.

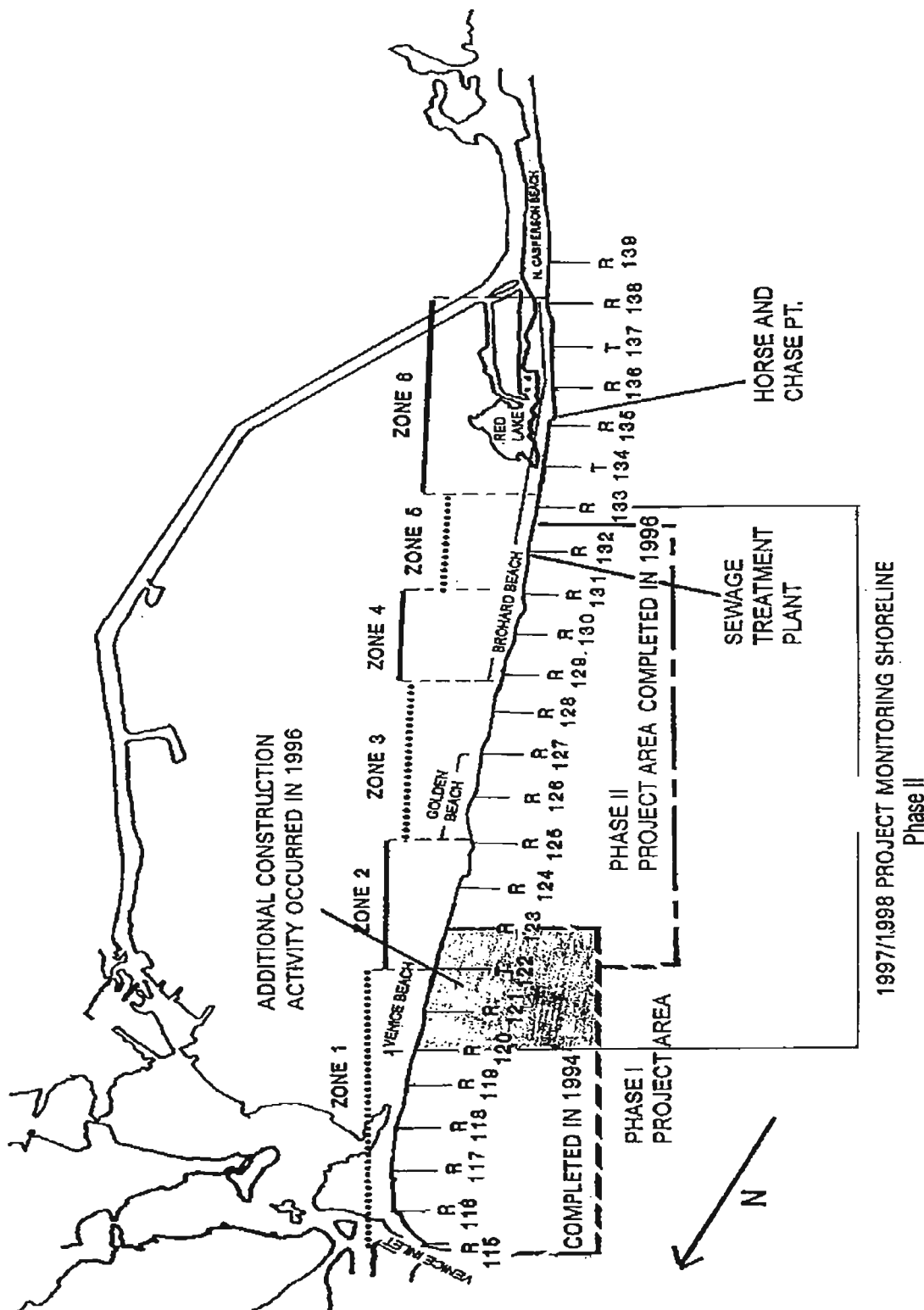


Figure 1. Map of Venice Showing: FDEP Survey Profile Monuments MML Turtle Monitoring Zones.

MOTE MARINE LABORATORY

The following are examples of non-nesting emergences: 1) a turtle that moved onto the beach but did not excavate a nest cavity and returned to the water, or 2) a turtle that moved up the beach, excavated a nest cavity or numerous nest cavities but for unknown reasons did not deposit any eggs in the nest (often these aborted nest excavations are left uncovered by the turtle). A nest was defined as a turtle emergence which resulted in the turtle successfully depositing eggs. When an emergence resulted in what "appeared" to the experienced patrol personnel to be a nest the site was identified as a "possible nest" and was monitored along with the nests to observe for hatching. These possible nests were reclassified as either nests or false crawls depending on the outcome.

During the daily patrol down the beach, false crawls and nests were recorded on MML Nesting Data forms (**Appendix B**). If the nest was determined to be endangered, it was carefully hand excavated. The eggs were placed in a bucket lined with sand and were transplanted higher on the beach. All nests, whether relocated or left *in situ*, were marked and encircled by wooden stakes connected with yellow surveyors' flagging tape and signage (**Figure 2**) identifying the site as a protected sea turtle nest. Each nest was additionally marked with the date the nest was laid and the location of the nest. Nest location was documented by two methods. In the field, monitoring personnel located nests by relative position to the nearest street address, building, or other landmark. These descriptions were then checked in the Laboratory's offices against annotated aerial photographs to associate the locations to the nearest FDEP monuments.

Hatching Surveys and Nest Evaluation

After 45 days incubation, nests were monitored daily to document evidence of hatch. Observance of one or more of the following was used to determine the first day of hatch to calculate incubation periods:

- 1) a hatchling or hatchlings present at the surface,
- 2) a hatchling crawl or crawls in the sand leading out from the nest area, and/or
- 3) a depression or emergence hole in the sand directly over the nest.

Following FWCC Marine Turtle Permit Guidelines nests are excavated three days or 72 hours after the initial hatch to determine hatch success. The delayed nest excavation allows the majority of hatchlings to emerge from the nest on their own. Hatchlings that have emerged on their own are more vigorous and are better equipped to handle the trek down the shoreline to the water. Once in the water these hatchlings also have a better chance at survival as their external yolk sacs have been completely utilized and/or absorbed allowing the hatchling to dive more readily and to swim more vigorously.

Data from nest evaluations were recorded on the Nesting Data forms.

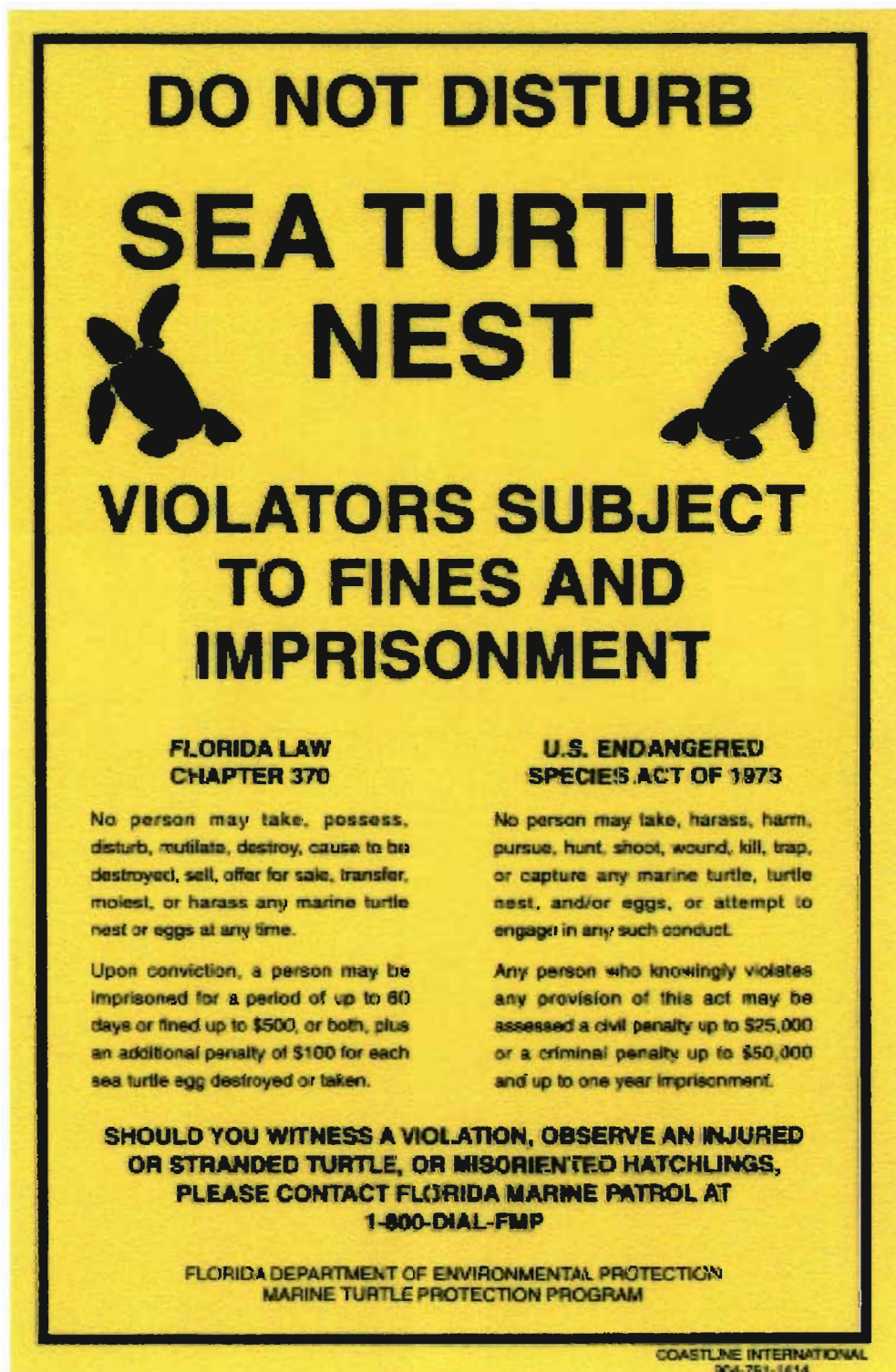


Figure 2. Sign marking protected sea turtle nests.

- Upon excavation the number *hatched* was calculated from the number of empty eggshells found in the nest.
- *Pipped eggs* referred to either live or dead hatchlings that had punctured the eggshell but had not fully emerged, these are not included in the number hatched.
- The number of *unhatched* referred to the number of unhatched eggs found in the nest upon excavation.
- The number of hatched shells minus the number of live and dead hatchlings found in the nest account for the number of hatchlings that *emerged* from the nest on their own prior to nest excavation.

When live hatchlings were found in the nest they were either released immediately or were transferred to a bucket containing moist sand and kept for release that same evening. Nest excavations and hatchling releases were conducted according to FWCC Marine Turtle Permit guidelines.

Data Analysis

Marine turtle emergence and hatching data were compiled using Paradox, a dBase compatible software program by Borland and Assoc. Figures and Tables were created using a combination of Paradox, Word Perfect (Corel) and Super Calc (Computer Assoc.).

RESULTS AND DISCUSSION

Turtle Emergences (Nests & Non-nesting emergences)

The beach monitoring procedures discussed above resulted in the documentation of a total of 275 nests and 312 non-nesting emergences (**Appendix C**) for the Venice shoreline. All of the nests were completed by loggerhead turtles, no green turtle nests were documented for the 2000 season (although one nest was recorded on Casey Key to the north of Venice; and 11 were recorded on Manasota Key adjacent and to the south of Venice). The nest to non-nesting emergence ratio was 0.88 nests to one non-nesting emergence. When the nesting data is examined for the years 1991 through 2000 (**Table 1**) it is evident that nesting numbers show an overall increasing trend. The ten year nesting range documents a high of 290 nests in 1999 and a low of 148 nests in 1991. Nesting was down in 2000 from 1999 by 15 nests while non-nesting emergences increased by a total of 41. The nest to non-nesting emergence ratio has varied through the years but 1999 was the first year in which nest numbers exceeded the false crawl numbers. It is important to note that prior to the summer of 1996 the shoreline was comprised of small pocket beaches separated by seawalls, rock revetments & sandy escarpments. Suitable nesting habitat was available only in pocket beach areas yet successful nesting occurred as evidenced by the numbers in Table 1. A consistent and wide beach became available following the 1996 nesting season.

Table 1. Nest to false crawl ratio for marine turtles nesting on Venice beaches (R-115 to R-138), 1991 through 2000.

<u>Year</u>	<u>Total # Nests (N)</u>	<u>Total # Non-nesting emergences</u> <u>(NNE)</u>	<u>N/NNE Ratio</u>
1991	148	172	0.87:1
1992	196	227	0.86:1
1993	157	230	0.68:1
1994	187	238	0.78:1
1995	203	556	0.36:1
1996	263	372	0.70:1
1997	227	335	0.67:1
1998	285	510	0.55:1
1999	290	271	1.07:1
2000	275	312	0.88:1

Nesting activity on the restored beach, located between FDEP Monuments R-115 and R-133, was documented at 194 nests and 222 non-nesting emergences (**Figure 3**). The southern 5,000 feet of shoreline (R-133 to R-138) has not been included in previous beach restoration projects. This native or natural beach consists of a narrow sloped shoreline. Eighty one nests and 90 non-nesting emergences were reported here. These figures indicate that for the 2000 season there were approximately 57 nests per mile (35.4 nests per km) on the restored beach and approximately 85.6 nests per mile (53.2 nests per km) on the native beach. The seasonal pattern of marine turtle emergences for the Venice shoreline for both the restored beach and the natural beach is shown in **Figure 4**.

For the entire Venice shoreline the first emergence, a nest, was documented May 1st on the shoreline west of 880 Tarpon Center Drive between CCL Monuments R-118 and R-119. On August 27th the last emergence of the season, also a nest, was documented on the shoreline at north Casperson Public between CCL Monuments R-136 and 137. The period of peak nesting occurred in the eight weeks between May 14th and July 16th. Copies of the *Florida Fish and Wildlife Conservation Commission Nesting Survey Reporting Form for 2000* and the *Florida Fish and Wildlife Conservation Commission - Nest Success Reporting Form for 2000* which summarize the sea turtle activity for the 2000 season are included as (**Appendix D**).

Cross-Shore Nest Position

Turtles accessing the Venice shoreline for nesting had access to sandy beach habitat that ranged in width from approximately 10 to 350 feet above the daily mean high tide. In order to determine the turtles' preference in nesting location, or the cross-shore nest position on the beach, two methods were employed. In one method the beach width at nest sites was measured while in the second method the beach width at each nest site was visually estimated in the field. The beach width was divided into thirds, and nest locations were then classified as either upper beach (landward), middle beach, or lower beach (seaward).

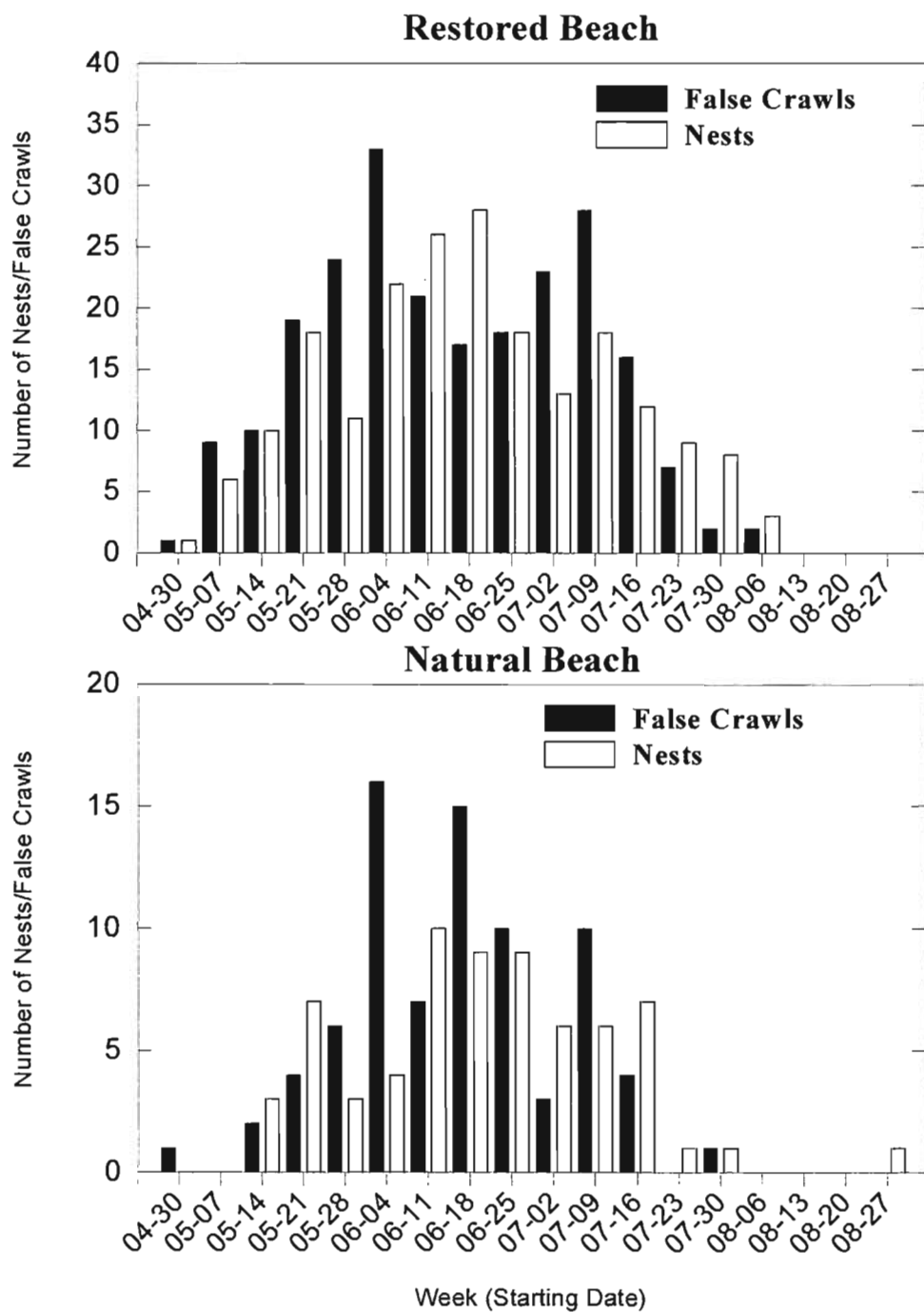


Figure 3. Marine turtle emergences for the entire Venice shoreline located by FDEP monument - 2000.

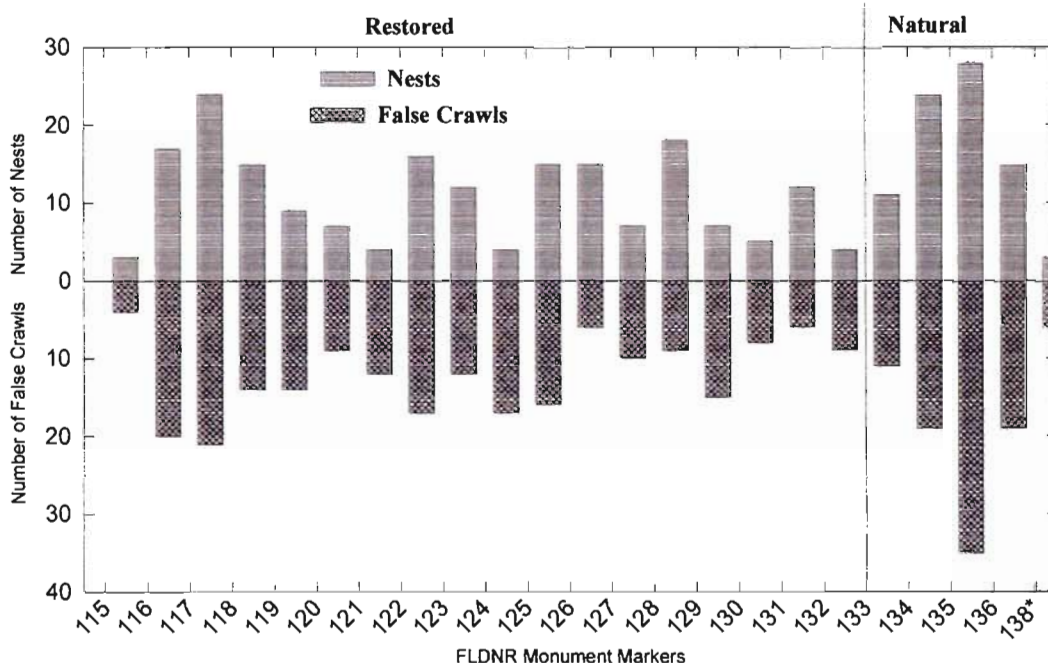


Figure 4. Seasonal pattern of marine turtle emergences for the entire Venice shoreline - 2000.

By looking at the beach regardless of width (**Table 2**) the seaward third or lower beach was the preferred location with 54% (n= 148) of the nests. Thirty one percent (n=84) of the nests occurred in the middle beach area, and 15% (n=41) occurred on the upper beach.

Table 2. Nest locations by relative beach width using visual classification regardless of actual beach width for the Venice shoreline (n=273).

<u>Location</u>	<u>Number of Nests</u>	<u>Percentage</u>
Landward/Upper Beach	41	15%
Mid-beach	84	31%
Seaward/Lower Beach	148	54%

When looking at the number of feet above the daily mean high tide line for each nest it is evident that, regardless of total beach width, the turtles preferred to nest within the seaward 60 feet (**Table 3**). These data are consistent with previous Venice data (Foote *et al*, 1995, 1997 and 1998), and the nesting data from Longboat Key, Florida (Foote and Truitt, 1993, Foote and Mueller 1999) where

immediately following beach restoration, the turtles preference for nesting switched from the upper beach on a narrow shoreline to the seaward third of the beach width on the wider restored shoreline.

Table 3. Nest locations measured upland from the daily Mean High Water Line (N=271)

Ft. Above MHW	Native Count	Restored Count	Native Percent	Restored Percent	Native Cumulative %	Restored Cumulative %
0	0	9	0.0	4.7	0.0	4.7
10	3	33	3.8	17.1	3.8	21.8
20	9	51	11.5	36.4	15.4	48.2
30	15	43	19.2	22.3	34.6	70.5
40	23	27	29.5	14.0	64.1	84.5
50	4	11	5.1	5.7	69.2	90.2
60	9	6	11.5	3.1	80.8	93.3
70	5	2	6.4	1.0	87.2	94.3
80	2	2	2.6	1.0	89.7	95.3
90	2	2	2.6	1.0	92.3	96.4
100	1	1	1.3	0.5	93.6	96.9
110	1	0	1.3	0.0	94.9	96.9
120	2	1	2.6	0.5	97.4	97.4
130	1	0	1.3	0.0	98.7	97.4
140	0	1	0.0	0.5	98.7	97.9
150	1	0	1.3	0.0	100.0	97.9
>159	0	4	0.0	2.1	100.0	100.0
Total:	78	193	100	100		

Nest Damage

Thirty two percent (n=88) of the nests along the Venice shoreline experienced either partial or complete destruction during the 2000 season (**Table 4**). Nest damage was caused by raccoon, fire ant and ghost crab predation; and by water over the nests due to high tides or storm surge, and nests washing out due to the same.

Table 4. Nests documented as experiencing either partial or complete damage not including disorientation events (n=88).

<u>Cause of Nest Damage</u>	<u>Total Hatch</u>	<u># Nests Experiencing Some</u>
Inundation	27	22
Inundated & Washed out	24	2
Inundation & raccoon predation	1	1
Raccoon predation	33	9
Ghost crab predation	1	1
Predator unknown	1	1
Fire ants	<u>1</u>	<u>1</u>
Total	88	37

The summer of 2000 included tropical storm and hurricane activity that impacted the Gulf Coast beaches and many nests were inundated by tidal activity. Because of this both nest and hatch success was influenced. Fifty two nests (18.9%) along the shoreline were inundated (**Table 5**). Of these, 24 were subsequently washed out by tidal activity associated with Hurricane Gordon or tropical storm events. Twenty five of the nests experienced some hatch, with the percent of hatch ranging from a low of 0.97% to a high of 99%.

Table 5. Success of nests experiencing inundation (n=52).

<u>Status</u>	<u>Location DNR Ref.</u>	<u>Date Inundated</u>	<u>Washed out</u>	<u>No. Eggs Hatched</u>	<u>Total No. Eggs</u>	<u>Percent Hatch Success</u>
RES	116-117		Yes			
RES	126-127	6/29	Yes			
NAT	136-137		No	32	71	45.1
NAT	134-135	Mid July	No	5	81	6.2
RES	121-122	7/6	Yes			
RES	123-124	7/2, 7/15-16	No	96	107	89.7
NAT	135-136	Mid July	No	0	137	0.0
RES	131-132	Mid July	No	1	125	0.8
NAT	136-137	7/16	Yes			
RES	126-127	Multiple Times	No	112	118	94.9
NAT	135-136		No	86	90	95.6
NAT	134-135	Mid July	No	21	103	20.4
RES	129-130	Early July	No	85	118	72.0
RES	123-124	7/2, 7/15-16	No	10	127	7.9
RES	125-126	8/5-6	Yes			
NAT	133-134	Mid July	No	2	97	2.1
RES	122-123	7/2, 7/15-16	No	1	103	1.0
NAT	135-136	7/3	Yes	13		
RES	123-124	7/2, 7/15-16	No	11	121	9.1
NAT	133-134		No	80	110	72.7
NAT	135-136	Early July	No	44	100	44.0
RES	125-126	Multiple Times	No	113	114	99.1
RES	122-123	7/2, 7/15-16, 8/13	No	0	117	0.0
NAT	134-135	Early July	No	42	74	56.8
NAT	133-134	Mid July	Yes			
NAT	135-136	7/16	No	0	121	0.0
RES	129-130	7/17	No	79	109	72.5
RES	131-132	Mid July	No	114	121	94.2
NAT	134-135	8/13	No	42	72	58.3
RES	116-117	8/14	No			
RES	123-124	7/2, 7/15-16	No	97	104	93.3

Table 5. (Continued)

<u>Status</u>	<u>Location DNR Ref.</u>	<u>Date Inundated</u>	<u>Washed out</u>	<u>No. Eggs Hatched</u>	<u>Total No. Eggs</u>	<u>Percent Hatch Success</u>
RES	131-132	Mid July	Yes			
RES	116-117	7/21	Yes			
NAT	134-135	Mid July	No	0	186	0.0
NAT	137-138	7/16	Yes			
RES	131-132	Mid July	No	93	101	92.1
RES	132-133	Also Raccoon Dam.	No	20	90	22.2
NAT	134-135	Mid July	No	14	102	13.7
NAT	135-136	7/19	Yes			
RES	126-127	9/16	Yes			
RES	122-123	9/17	Yes			
RES	128-129	9/16	Yes			
RES	124-125	9/17	Yes			
RES	124-125	9/17	Yes			
RES	120-121	9/17	Yes			
RES	120-121	9/17	Yes			
RES	123-124	9/17	Yes			
RES	122-123	9/17	Yes			
RES	131-132	9/17	Yes			
NAT	134-135	9/17	Yes			
RES	122-123	9/17	Yes			
RES	123-124	7/2, 7/15-16	No	100	127	78.7

RES = restored beach

NAT = native or natural beach * stakes washed out/nest not found

Incubation

The average incubation was calculated for *in situ* and relocated nests for the entire Venice shoreline. *In situ* nests for which the emergence date and the hatch date were known (n = 130) had an average incubation rate of 49 days (range 43-63 days). Nests that were relocated and had known emergence and hatch dates (n = 17) also had an average incubation of 49 days (range 46-54 days). There appeared to be no significant difference in incubation for *in situ* versus relocated nests.

Nest Success Evaluation

One hundred ninety nine out of a total of 275 nests were excavated for nest success evaluations. Only nests for which MML had complete data were evaluated. Nests for which complete data were not available were not included in the following calculations (n=76). All partial data were recorded for

future reference but were not included in the evaluations.

The distribution of mean hatch success is shown in **Table 6**. Hatch success ranged from 76.3% for *in situ* nests to 84.3% for relocated nests. The overall hatch success rate was 77% for both relocated and *in situ* nests.

Table 6. Hatch success for evaluated nests, relocated and *in situ* (i.e., not relocated).

	Relocated <u>n=20</u>	<i>In situ</i> <u>n=179</u>	Total <u>n=199</u>
Eggs destroyed	0	153	153
Eggs hatched	1741	14426	16167
Eggs unhatched	251	4032	4283
Live pipped	7	12	19
Dead pipped	<u>66</u>	<u>278</u>	<u>344</u>
Total # of Eggs	2065	18901	20966
Percent Hatch Success	84.3%	76.3%	77%

Emergence Success Evaluation

Excavations of evaluated nests revealed a total of 463 live hatchlings and 305 dead hatchlings remained in the nests as compared to 15,399 that had emerged on their own within the 72 hours prior to nest excavation (**Table 7**). The percent of hatchlings that emerged successfully from relocated nests was 93.9% as compared to 95.4% emergence success for *in situ* nests. The overall emergence success for the evaluated nests was 95.2%.

Table 7. Hatchling emergence success for relocated versus *in situ* nests.

	<u>Relocated</u>	<u><i>In situ</i></u>	<u>Total</u>
# Eggs hatched	1741	14426	16167
- Live in nest	(100)	(363)	(463)
- Dead in nest	<u>(5)</u>	<u>(300)</u>	<u>(305)</u>
# Hatchlings emerged	1636	13763	15399
Percent Emergence Success	93.9%	95.4%	95.2%

Hatchling Disorientation Events

A total of 12 hatchling disorientation events (**Appendix E**) were recorded for the season (**Table 8**). After emerging from the nest, hatchlings typically move away from shadows (e.g., dune vegetation, tree silhouettes, and unlighted structures) and move toward the lighter, open horizon of the water (Salmon, *et al.*, 1992). Hatchlings are attracted to artificial lighting Witherington *et al.*, 1996 and Witherington and Martin, 1996) and instead of heading toward the water will travel great distances to artificially lighted areas. This activity of looping around and traveling in a direction other than to

the water is termed a disorientation. Disorientation events often lead to death of the hatchling from dehydration, predation, or being run over by vehicular traffic when they travel to roadways or parking lots. Disorientation events may involve from one hatchling to an entire nest.

It is important to note that in nourished beach locations where the new beach is much wider than the native or pre-project beach, the hatchling has a much better view of surrounding lights and can be impacted by them for the duration of the period of time that it is on the beach. The City of Venice and MML continued to work toward compliance with the City of Venice Lighting Ordinance. It is critical that the issue of "turtle friendly" lighting (no lighting, shielded or dimmed lighting, lights low to the ground and shielded by vegetative barriers) along the beachfront property of Venice be kept foremost in the City plans.

All disorientation events are recorded on Marine Turtle Hatchling Disorientation Incident Report Forms and submitted the FWCC, Florida Marine Research Institute. The forms utilized by Mote Marine Laboratory are the same as those provided by the FWCC with the exception that we have added our Mote Logo, the nest location category, a box for sketching the disorientation, and the checklist on the upper right corner. All other questions/categories are identical to those on the FWCC form. This data is submitted to FWCC as per our sea turtle permit requirements.

Table 8. Summary of Year 2000 marine turtle hatchling disorientation events for Venice beaches (n=12).

<u>Incident Date</u>	<u>Nest Location</u>	<u>Minimum # of Disoriented Hatchlings</u>	<u>Hatchlings Disoriented To</u>
6/29-30	1116 Sunset Dr.	20	1120 Sunset Dr: globe pool lights * interior lights
7/6	255 Esplanade	20	255, 333 & 555 Esplanade
7/8	416 Hunter	25	N Cornwall-on-the-Gulf, 500Park Blvd & 550 Flamingo
7/14	555 Esplanade	10	East and North East
7/22	834 GBB	60	720 GBB: interior & exterior lights
7/27	631 Alhambra	40	412 & 416 Hunter, 633 Alhambra
7/29	N Cornwall	52	N Cornwall & 428 Hunter
8/6	627-629 Alhambra	25	627-629 Alhambra: interior lights
8/8	Venice Public Bch.	57	interior bathroom lights, exterior light on pavilion, street lights
8/21	624 Flamingo	85	627 Alhambra south to 550 Flamingo: primarily interior lights
8/25	720 GBB	75	720 GBB
8/30	S of City Pier	6	Sharkeys Restaurant

GBB = Golden Beach Blvd.

Marine Turtle Strandings

Two sea turtle strandings were documented for the 2000 season (**Appendix F**). Both events

involved the stranding of dead turtles. On June 6th the remains of a subadult loggerhead turtle washed ashore on Venice Public south of the southern lifeguard tower. Three propeller lacerations punctured the anterior portion of the carapace (upper shell) but because of the advanced state of decomposition the turtle was not transported to Mote Marine Laboratory for necropsy and the exact cause of death remains unknown.

The second stranding occurred on July 6th when the remains of an adult loggerhead washed ashore gulfside of 700 Golden Beach Blvd. Approximately 1.9 miles south of Venice Inlet. The location was documented as approximately at DNR Monument R-125. Propeller lacerations through the carapace were documented. Because of the advanced state of decomposition the remains were not transported to Mote Marine Laboratory and the exact cause of death could not be determined. It is unknown whether the boat strike occurred prior or subsequent to the death of the turtle. A muscle sample was collected to be submitted for genetic analysis.

Both of the above turtles were photographed, documented, measured, and the carcasses were buried on the beach. Data on the turtles were submitted to the Florida Fish and Wildlife Conservation Commission, Florida Marine Research Institute, as per our sea turtle permit requirements.

CONCLUSIONS

This report has presented the results of marine turtle monitoring for Venice beaches in Sarasota County Florida. The monitoring activity covered the beach from the Venice Jetties south to the southernmost dune crossover at Casperson Beach. This area corresponds to the shoreline between DNR Monument R-115 south to R-138. A total of 275 nests and 312 non-nesting emergences (or false crawls) of the loggerhead sea turtle (*Caretta caretta*) were documented between May 1st and October 31st, 2000. No green turtle (*Chelonia mydas*) nests were documented on the Venice shoreline for the 2000 season (although one nest was documented on Casey Key, adjacent and to the north of Venice; and 11 were documented on Manasota Key, adjacent and to the south of Venice).

The average incubation for all nests, relocated and *in situ* was 49 days. The range for *in situ* nests was 43 to 63 days, and for relocated nests 46 to 54 days. The overall hatch success rate 77% (84/3% for relocated nests and 76.3% for *in situ*). The overall emergence success of those which hatched was 95.2% (93.9% for relocated and 95.4% for *in situ*).

A preference for the sloped lower beach for nesting was documented with 54% of all nests occurring on the lower (seaward third) of the beach on both the restored and the natural beaches. The turtles nesting preference for the mid beach area was documented at 31% of all nests and 15% for the upper third of the beach regardless of beach width. Because of the preference the turtles exhibit for the sloped lower beach for nesting, possible increased nest loss should be a consideration for coastal managers, marine turtle monitoring personnel, and for coastal engineers who design beach profiles.

Thirty two percent of the nests along the Venice shoreline experienced either partial or complete destruction by either predation or inundation. Of the nests that were damaged by storm or tidal

activity (n=52) 48 % experienced some hatch while . The percent of hatch for these nests ranged from a low of 0.97% to a high of 99%.

Monitoring for sea turtle nest and hatch activity for the City of Venice was completed on 10/31/2000, coinciding with the regulatory end of sea turtle nesting/hatching season. Personnel continue to be on call for emergencies and consulting purposes.

ACKNOWLEDGMENTS

The authors thank the City of Venice, beachfront homeowners, business owners, and condominium associations for allowing monitoring personnel access to all beach areas and for increasing "turtle friendly lighting". A special thank you goes to Harry Hoff and Joe Zann for their invaluable assistance with lighting surveys and compliance issues. Thank you to Patrick S. Collins, City Engineer, for allowing us the opportunity to work with The City of Venice and for his assistance. Also, THANK YOU to Dave and Ann Rosequest, Jim and Julie Carney, Allen Jacks, Emil Partak, Fred and Ruth Verderosa, Shirley Nenno, Paul and Rafaela Myers, Anne Bernier, Bill Gallagher, Paul and Judy Kehoe, Reg Ringel, George Iosue, and Carol Schryver - Members of the Venice Turtle Patrol - for all of their time, hard work, and assistance. The authors also thank Mote Marine Laboratory staff Joie Simoneaux for her assistance.

REFERENCES

- Foote, J.J. and Truitt, C.L. 1993. "Sea Turtle Protection Measures Including Nest/Hatch and Sand Compactness Monitoring for the Longboat Key Beach Restoration Project." MML Technical Report No. 313 submitted to Applied Technology and Management, Inc., Gainesville, FL. and The Town of Longboat Key, Longboat Key, FL.
- Foote, J.J. and Nicole L. Park. 1995. "Sea Turtle Protection Measures Including Nest/Hatch and Sand Compactness Monitoring for the City of Venice Beach Restoration Project, Sarasota County." MML Technical Report No. 455 submitted to the City of Venice, Venice, Florida.
- Foote, J.J. and Jay L. Sprinkel. 1997. "Sea Turtle Protection Measures Including Nest/Hatch and Sand Compactness Monitoring for the City of Venice Beach Restoration Project, 1996 Activities Summary." MML Technical Report No. 500 submitted to the City of Venice, Venice, Florida.
- Foote, J.J., Tracey L. Mueller and Jay L. Sprinkel. 1998. "Venice Beach Nourishment Project Marine Turtle Monitoring for Phase II: Year 1 Post Project - 1997". MML Technical Report No. 566 submitted to the City of Venice, Venice, Florida.
- National Marine Fisheries Service and U.S. Fish and Wildlife Service. 1991, Recovery Plan for U.S. Population of Loggerhead Turtle. National Marine Fisheries Service, Washington D.C.

Salmon, M. Wyneken, J., Fritz, E.U., and Lucas, M. 1992. "Ocean Finding by Hatchling Sea Turtles: Interplay of Silhouette, Slope and Brightness as Guideposts in Orientation," Proceedings of the Eleventh Annual Workshop on Sea Turtle Biology and Conservation, NOAA Technical Memorandum NMFS-SEFSC-302, National Marine Fisheries Service, Southeast Fisheries Center, Miami, Florida.

Witherington, B.E., and R.E. Martin, 1996. Understanding, assessing, and resolving light-pollution problems on sea turtle nesting beaches. FMRI Tech. Rep. TR-2. Florida Marine Research Institute, St. Petersburg, Florida. 73 p.

Appendices

Appendix A



Florida Fish & Wildlife Conservation Commission

James L. "Jamie" Adams, Jr. Barbara C. Barsh Quinton L. Hedgepeth, DDS H.A. "Herky" Huffman
Bushnell Jacksonville Miami Deltona
David K. Meehan Julie K. Morris Tony Moss Edwin P. Roberts John D. Rood
St. Petersburg Sarasota Miami Pensacola Jacksonville

ALLAN L. EGBERT, Ph.D., Executive Director
VICTOR J. HELLER, Assistant Executive Director

BUREAU OF PROTECTED SPECIES MANAGEMENT
DAVID W. ARNOLD, BUREAU CHIEF
Tequesta Field Laboratory
19100 SE Federal Highway
Tequesta, FL 33469
PHONE (561) 575-5407
FAX (561) 743-6228

AUTHORIZED PERSONNEL AMENDMENT

Jerris J. Foote
Mote Marine Laboratory
1600 Ken Thompson Parkway
Sarasota, Florida 34236

TP #028

Permit Expires: 31 January 2001

As of the date below, the following personnel are authorized to perform the activities listed on Marine Turtle Permit #028.

Authorized personnel: J. Foote, A. Bernier, M. Catizone, J. Carney, J. Carney (2), B. Gallagher, A. Jacks, J. Kehoe, P. Kehoe, A. MacConnell, P. Myers, R. Myers, G. Muth, S. Nenno, E. Partak, N. Phero, R. Ringel, A. Rosequist, D. Rosequist, C. Tajkowski, F. Verderosa, R. Verderosa, D. Marshall, G. Iosue, C. Schryver.

This personnel authorization supersedes all others and must be attached to the turtle permit of most recent issue. This is not a permit and cannot be used as such.

Beth Sanford

Bureau of Protected Species Management
Office of Environmental Services

April 24, 2000

Date

cc: BPSM, Tallahassee



Florida Fish & Wildlife Conservation Commission

James L. "Jamie" Adams, Jr. Barbara C. Barsh Quinton L. Hedgepeth, DDS H.A. "Herky" Huffman
Bushnell Jacksonville Miami Deltona
David K. Meehan Julie K. Morris Tony Moss Edwin P. Roberts John D. Rood
St. Petersburg Sarasota Miami Pensacola Jacksonville

ALLAN L. EGBERT, Ph.D., Executive Director
VICTOR J. HELLER, Assistant Executive Director

BUREAU OF PROTECTED SPECIES MANAGEMENT
DAVID W. ARNOLD, BUREAU CHIEF

MARINE TURTLE PERMIT

Jerris J. Foote
Mote Marine Laboratory
1600 Ken Thompson Parkway
Sarasota, Florida 34236

TP #028

Permit Expires: 31 January 2001

Renewal, permitted activities amended.

Authorized To: (1) conduct stranding/salvage activities, (2) conduct nesting surveys, (3) relocate nests, (4) screen nests with self-releasing screen/cage, (5) screen nests with restraining cage.

Authorized Nesting Survey Area: Venice Beach, Brohard Beach and North Casperson Beach (from the Venice jetties south through North Casperson Beach).

Authorized Research Projects: None.

Authorized Personnel: J. Foote, A. Bernier, M. Catizone, J. Carney, J. Carney (2), C. Faith, R. Faith, B. Gallagher, A. Jacks, J. Kehoe, P. Kehoe, A. MacConnell, P. Myers, R. Myers, G. Muth, S. Nenno, E. Partak, N. Phero, R. Ringel, A. Rosequist, D. Rosequist, C. Tajkowski, F. Verderosa, R. Verderosa.

General Conditions: Permitted individuals must adhere to the FWC marine turtle permit guidelines developed under a Section 6 Cooperative Agreement between FWC and the U.S. Fish and Wildlife Service.

Special Conditions: None.

David W. Arnold, Chief
Bureau of Protected Species Management
Office of Environmental Services

1-19-2000

Date

cc: Sandy MacPherson, Southeast Regional Sea Turtle Coordinator, USFWS
FMP, District(s) 4
FWC, Tequesta Office

Appendix B

Caretta caretta loggerhead →

Chelonia mydas green →

Emergence # →



2000 NEST DATA FORM

ZONE #

NEST #

OBSERVER

DATE NEST FOUND

LOCATION OF CRAWL (nearest address; house #)

RELOCATED? YES NO

NEW LOCATION (nearest address):

WHY WAS NEST RELOCATED?

COMMENTS

LOCATION NOTES

Circle one: Upper Middle Lower

Circle one: In Vegetation At Escarpment Open Beach

Other _____

Distance from MHW (in feet) _____

Distance from Barrier (in feet) _____

SCREENED: NO / YES DATE SCREENED _____

SELF RELEASING BOX SELF RELEASING FLAT RESTRAINING

BEFORE PREDATION

AFTER PREDATION

CRAWL DIAGRAM

MANASOTA AND CASEY KEYS ONLY: IF YOU FOUND A TAG-FORM AT THE NEST, WRITE ZONE # AND NEST # ON BOTTOM OF TAG FORM, AND WRITE TAG NUMBERS IN ABOVE COMMENT SECTION

HATCHING DATA

Calculate Nest: 70 days after date laid if no evidence of hatchling emergence or 72 hrs after the first hatchling emergence.

DATE NEST HATCHED

INCUBATION DAYS (OPTIONAL)

DATE EXCAVATED

EXCAVATED BY

WAS NEST DAMAGED? YES NO

WHAT CAUSED THE NEST TO BE DAMAGED?

_____ DEPREDATION _____ DATE(S)

RACCOON _____, ANTS _____, ARMADILLO _____,

OTHER _____, UNKNOWN _____

_____ WASHED OVER BY TIDE _____ DATE(S)

_____ UNDER STANDING WATER _____ DATE(S)

_____ WASHED OUT _____ DATE(S)

_____ DISORIENTATION _____ DATE(S)

SKETCH OF DISORIENTATION

_____ Live Hatchlings in Nest

(+)_ Dead Hatchlings in Nest

(=)_ Total of Hatchlings in Nest

_____ Hatched Eggs Counted

(-)_ Total of Hatchlings Found in Nest

(=)_ Hatchlings emerged on Their Own

_____ Hatched Eggs Counted

(+)_ Live Pipped

(+)_ Dead Pipped

(+)_ Eggs Destroyed

(+)_ Eggs Unhatched

(=)_ Total # of Eggs in Nest

IF APPLICABLE: _____ # DEAD HATCHLINGS FOUND ON SURFACE WITHIN ~ 2' OF NEST

COMMENTS:

* IF THE HATCHLINGS WERE DISORIENTED, ATTACH A COPY OF THE DISORIENTATION REPORT.

Emergence #: _____

Cc loggerhead _____ Cm green _____

2000 False Crawl Form

Zone _____

Observer _____

False Crawl # _____

Date _____

Location of crawl (nearest address; house #)

Location

Circle one: Upper Middle Lower
Circle one: In vegetation At Escarpment Open Beach
Other _____

Distance from MHW (in feet) _____

Distance from Barrier (in feet) _____

Escarpment: yes no Straight Sloped
Height of escarpment: _____

Body Pitting: yes no

Egg Cavity: yes no (# of cavities _____)

Describe obvious reasons for false crawl: _____

Crawl Diagram:

Emergence #: _____

Cc loggerhead _____ Cm green _____

2000 False Crawl Form

Zone _____

Observer _____

False Crawl # _____

Date _____

Location of crawl (nearest address; house #)

Location

Circle one: Upper Middle Lower
Circle one: In vegetation At Escarpment Open Beach
Other _____

Distance from MHW (in feet) _____

Distance from Barrier (in feet) _____

Escarpment: yes no Straight Sloped
Height of escarpment: _____

Body Pitting: yes no

Egg Cavity: yes no (# of cavities _____)

Describe obvious reasons for false crawl: _____

Crawl Diagram:

Appendix C

Appendix Table C. Marine Turtle Nest and Non-nesting Emergence Activity (R-115 to R-138) ~ Venice, FL

<u>Status</u>	<u>Date</u>	<u>ADDRESS</u>	<u>FLDNR</u>	<u>Nest</u>	<u>Moved</u>	<u>Type</u>	<u>Date</u>	<u>How destroyed</u>	<u>No.</u>	<u>Total</u>
				<u>NNE</u>		<u>Screen</u>	<u>Hatched</u>		<u>Hatched</u>	<u>Eggs</u>
Restored	#N/A	TCD TO TCD / ALOHA-YACHT CLUB APTS)	116-117	Nest			14-Jul	.	102	106
Restored	#N/A	SERVICE CLUB PARK / R-128 TO R-129	128-129	Nest		Box	09-Aug		135	135
Natural	#N/A	RED LAKE / R-135 TO R-136	135-136	Nest		Box	06-Aug		115	120
Natural	#N/A	HORSE & CHAISE POINT / R-135 TO R-136	135-136	Nest		Box	20-Jul		101	130
Natural	#N/A	NORTH CASPERSON PUBLIC BEACH / R-136 TO R-137	136-137	Nest				DEP/RAC	0	
Restored	01-May	880 TCD	118-119	Nest			23-Jun	DIS 6/23	73	75
Natural	03-May	NORTH CASPERSON PUBLIC BEACH / T-137 TO R-138	137-138	NNE						
Restored	05-May	TCD / YACHT CLUB APT	116-117	NNE						
Restored	07-May	ESPLANADE	121-122	NNE						
Restored	07-May	PARK BLVD / ALDEA MAR	123-124	NNE						
Restored	07-May	GBB / MACARTHUR BEACH & RACQUET CLUB	125-126	Nest			30-Jun		89	108
Restored	08-May	TCD / HARBOR HOUSE	118-119	NNE						
Restored	09-May	SUNSET DRIVE	128-129	Nest			29-Jun	DIS 6/29	137	158
Restored	10-May	TCD / JETTY VILLAS	115-116	NNE						
Restored	10-May	TCD	118-119	Poss.						
Restored	10-May	SOUTH VENICE PIER / T-131 TO R-132	131-132	NNE						
Restored	11-May	TCD / THE TOWERS	117-118	NNE						
Restored	12-May	TCD / CHATEAUGAY	117-118	Nest			30-Jun		110	115
Restored	13-May	ALIAMBRA / VALENCIA	122-123	Nest			08-Jul		88	99
Restored	13-May	HUNTER	122-123	Nest			06-Jul		115	125
Restored	13-May	GOLDEN BEACH ACCESS	125-126	NNE						
Restored	13-May	SUNSET DRIVE / WINDSONG CONDO	128-129	NNE						
Restored	13-May	SEWAGE TREATMENT PLANT / T-131 TO R-132	131-132	NNE						
Restored	14-May	TCD / GULF N BAY	116-117	Poss.				IN(WASHED OUT)		
Restored	14-May	PARK BLVD	123-124	Nest			05-Jul	DEP - UNKNOWN PREDATOR 7/4	37	89
Restored	14-May	FLAMINGO / SAN RAMON (SOUTH END)	124-125	NNE						
Restored	14-May	GBB / MACARTHUR BEACH & RACQUET CLUB (N END)	125-126	Nest	Yes		07-Jul		115	120
Restored	14-May	SUNSET DR	128-129	Nest			05-Jul		111	116
Natural	14-May	HORSE & CHAISE POINT / R-135 TO R-136	135-136	NNE						
Restored	15-May	ESPLANADE / GULF SHORES	119-120	Nest			06-Jul	DIS 7/6	93	96
Restored	16-May	PUBLIC BEACH PAVILION	120-121	Nest			06-Jul		95	101

MOTE MARINE LABORATORY

Appendix Table C. (Continued)

<u>Status</u>	<u>Date</u>	<u>ADDRESS</u>	<u>FLDNR</u>	<u>Nest</u> <u>NNE</u>	<u>Moved</u>	<u>Type</u> <u>Screen</u>	<u>Date</u> <u>Hatched</u>	<u>How destroyed</u>	<u>No.</u> <u>Hatched</u>	<u>Total</u> <u>Eggs</u>
Restored	16-May	ALHAMBRA / VALENCIA	122-123	NNE						
Restored	16-May	SERVICE CLUB PARK / R-128 TO R-129	128-129	NNE						
Restored	17-May	TCD / ORLEANS	118-119	NNE						
Restored	17-May	VENICE PUBLIC BEACH / SOUTH END	120-121	NNE						
Restored	17-May	HUNTER	122-123	Nest				DIS 7/8		
Restored	17-May	GBB / WINDSONG VILLAS	125-126	NNE						
Restored	17-May	GBB	126-127	Poss.				IN (WASHED OUT) 6/29		
Restored	17-May	SERVICE CLUB PARK / R-129	129-130	Nest		Box	06-Jul		103	103
Natural	17-May	NORTH CASPERSON PUBLIC BEACH / R-136 TO R-137	136-137	Nest		Box	11-Jul	IN (WASHED OVER)	32	71
Restored	18-May	1200 TCD / CHATEAUGAY	117-118	Nest			06-Jul		97	103
Restored	18-May	TCD / ORLEANS	118-119	NNE						
Natural	18-May	VENICE GOLF CLUB / R-134 TO R-135	134-135	NNE						
Restored	19-May	CORNWALL ON THE GULF NORTH	123-124	NNE						
Restored	19-May	GBB / BEACHCOMBER	125-126	NNE						
Natural	19-May	HORSE & CHAISE POINT / R-135 TO R-136	135-136	Nest			11-Jul		102	105
Natural	20-May	BROHARD BEACH PARK / R-133 TO R-134	133-134	NNE						
Natural	20-May	VENICE GOLF CLUB / R-134 TO R-135	134-135	Nest		Box		IN(WASHED OVER) EARLY MID-JULY	5	81
Restored	21-May	TCD / GULF & BAY	116-117	NNE						
Restored	21-May	TCD	118-119	NNE						
Restored	21-May	OCALA	121-122	Nest				IN(WASHED OUT) 7/6		
Natural	21-May	HORSE & CHAISE POINT / R-135 TO R-136	135-136	NNE						
Restored	22-May	TCD / SAN MARCO	117-118	Nest					73	76
Restored	22-May	TCD / THE TOWERS	117-118	NNE						
Restored	22-May	S ESPLANADE	120-121	Poss.						
Restored	22-May	FLAMINGO DRIVE / ISLAND SHORES	124-125	NNE						
Natural	22-May	VENICE GOLF CLUB / R-133 TO R-134	133-134	Nest		Box	10-Jul		92	108
Restored	23-May	ALHAMBRA / VALENCIA	122-123	NNE				IN (WASHED OVER) 7/2,7/15,7/16		
Restored	23-May	ALHAMBRA / VENICE SANDS	122-123	NNE						
Restored	23-May	PARK BLVD / ALDEA MAR (MID OF N. BLDG)	123-124	Nest			13-Jul	IN (WASHED OVER) 7/2,7/15,7/16	96	107
Restored	23-May	PARK BLVD / ALDEA MAR (N OF BEACH ACCESS)	123-124	NNE				IN (WASHED OVER) 7/2,7/15,7/16		
Restored	23-May	LITTLE LAKE / R-129 TO R-130	129-130	NNE						

MOTE MARINE LABORATORY

Sea Turtle Monitoring, Venice Beach. Summary Report for 2000 ~ MML Technical Report 732, 12/29/00

Page 27

Appendix Table C. (Continued)

<u>Status</u>	<u>Date</u>	<u>ADDRESS</u>	<u>FLDNR</u>	<u>Nest</u> <u>NNE</u>	<u>Moved</u>	<u>Type</u> <u>Screen</u>	<u>Date</u> <u>Hatched</u>	<u>How destroyed</u>	<u>No.</u> <u>Hatched</u>	<u>Total</u> <u>Eggs</u>
Natural	23-May	VENICE GOLF CLUB / R-134 TO R-135	134-135	Nest		Box	11-Jul		82	91
Natural	23-May	VENICE GOLF CLUB / R-134 TO R-135	134-135	Nest				DEP/RAC	0	
Restored	24-May	TCD / CHATEAUGAY	117-118	Nest			12-Jul		102	107
Restored	24-May	ESPLANADE	121-122	Nest			12-Jul		117	128
Natural	24-May	RED LAKE / R-135 TO R-136	135-136	Nest		Box		IN - WASHED OVER MID-JULY	0	137
Restored	25-May	TCD / GULF N BAY	116-117	Poss.						
Restored	25-May	ESPLANADE / SAN SOVINO	118-119	NNE						
Restored	25-May	ESPLANADE / GULF HORIZONS	119-120	Nest			14-Jul	DIS 7/14	86	134
Restored	25-May	VENICE PUBLIC BEACH PAVILION	120-121	NNE						
Restored	25-May	OCALA	121-122	NNE						
Restored	25-May	SEWAGE TREATMENT PLANT / T-131 TO R-132	131-132	Nest		Box		IN - WASHED OVER MID-JULY	1	125
Natural	25-May	RED LAKE / R-135 TO R-136	135-136	NNE						
Natural	25-May	NORTH CASPERSON PUBLIC BEACH / R-136 TO R-137	136-137	Nest		Box	12-Jul		103	112
Natural	25-May	NORTH CASPERSON PUBLIC BEACH / R-137 TO R-138	137-138	NNE						
Restored	26-May	TCD / GULF N BAY	116-117	Nest					107	121
Restored	26-May	TCD / QUARTERDECK	116-117	NNE						
Restored	26-May	TCD / HARBOR HOUSE	118-119	Nest	Yes		17-Jul		60	73
Restored	26-May	OUTFALL #5 (40 FEET SOUTH)	124-125	NNE						
Restored	26-May	GBB / MACARTHUR BEACH & RACQUET CLUB	125-126	Nest			19-Jul		79	105
Restored	26-May	SUNSET DR	127-128	Nest			16-Jul		87	94
Restored	26-May	SERVICE CLUB PARK / R-128 TO R-129	128-129	NNE						
Natural	26-May	VENICE GOLF CLUB / R-133 TO R-134	133-134	NNE						
Natural	26-May	NORTH CASPERSON PUBLIC BEACH / R-136 TO R-137	136-137	Nest		Box		IN(WASHED OUT) 7/16		
Natural	26-May	NORTH CASPERSON PUBLIC BEACH / R-136 TO R-137	136-137	NNE						
Restored	27-May	ALHAMBRA / VALENCIA	122-123	Nest			27-Jul	DIS 7/27	126	129
Restored	27-May	PARK BLVD / ALDEA MAR (OUTFALL #4)	123-124	NNE						
Restored	27-May	VALENCIA	125-126	NNE						
Restored	27-May	GBB	126-127	Nest			24-Jul	IN (WASHED OVER) SEVERAL TIMES	112	118
Restored	27-May	GBB	126-127	Poss.						
Restored	27-May	SUNSET DR	127-128	Poss.						
Restored	27-May	LITTLE LAKE / R-129 TO R-130	129-130	NNE						

MOTE MARINE LABORATORY

Appendix Table C. (Continued)

<u>Status</u>	<u>Date</u>	<u>ADDRESS</u>	<u>FLDNR</u>	<u>Nest</u> <u>NNE</u>	<u>Moved</u>	<u>Type</u> <u>Screen</u>	<u>Date</u> <u>Hatched</u>	<u>How destroyed</u>	<u>No.</u> <u>Hatched</u>	<u>Total</u> <u>Eggs</u>
Natural	27-May	BROHARD BEACH PARK / R-133 TO R-134	133-134	NNE						
Natural	27-May	RED LAKE / R-134 TO R-135	134-135	Nest		Box		IN(WASHED OVER) MID-JULY	21	103
Natural	27-May	HORSE & CHAISE POINT / R-135 TO R-136	135-136	Nest		Box		IN(WASHED OVER)	86	90
Restored	28-May	TCD / QUARTERDECK	116-117	NNE						
Restored	28-May	ESPLANADE / GULF SHORES	119-120	NNE						
Restored	28-May	CORNWALL ON THE GULF NORTH	123-124	NNE						
Restored	28-May	DEER TOWN GULLEY / OUTFALL #8	127-128	NNE						
Restored	28-May	COAST GUARD STATION / R-129 TO R-130	129-130	Nest		Box	16-Jul	IN - WASHED OVER EARLY JULY	85	118
Natural	28-May	NORTH CASPERSON PUBLIC BEACH / R-136 TO R-137	136-137	Nest		Box	18-Jul		127	135
Restored	29-May	TCD / CHATEAUGAY	117-118	NNE						
Restored	29-May	TCD / HARBOR HOUSE	118-119	NNE						
Restored	29-May	TCD / HARBOR HOUSE-ORLEANS	118-119	NNE						
Restored	29-May	GBB / VILLAS ON GOLDEN BEACH	126-127	Nest	Yes		16-Jul		93	98
Restored	29-May	LITTLE LAKE / R-129 TO R-130	129-130	NNE						
Natural	29-May	NORTH CASPERSON PUBLIC BEACH / R-136 TO R-137	136-137	Nest				DEP/RAC	0	
Restored	30-May	TCD / THE TOWERS	117-118	Nest			12-Jul		103	113
Restored	30-May	ESPLANADE / SAN SOVINO	118-119	Nest	Yes		17-Jul		111	136
Restored	30-May	ALHAMBRA (CENTER OF POOL)	122-123	NNE						
Restored	30-May	FLAMINGO / SAN RAMON (SOUTH END)	124-125	NNE						
Natural	30-May	HORSE & CHAISE POINT / R-135 TO R-136	135-136	NNE						
Restored	31-May	ALHAMBRA	122-123	Nest			26-Jul		93	112
Restored	31-May	HUNTER	122-123	Nest			18-Jul		74	101
Natural	31-May	VENICE GOLF CLUB / R-134 TO R-135	134-135	NNE						
Natural	31-May	RED LAKE / R-135 TO R-136	135-136	NNE						
Restored	01-Jun	TCD / SAN MARCO	117-118	Nest			21-Jul		127	138
Restored	01-Jun	SERVICE CLUB PARK / R-128 TO R-129	128-129	Nest		Box	22-Jul		99	106
Restored	01-Jun	N VENICE PARK / R-130 TO T-131	130-131	Nest		Box	25-Jul		149	157
Natural	01-Jun	NORTH CASPERSON PUBLIC BEACH / R-137 TO R-138	137-138	NNE						
Restored	02-Jun	TCD / JETTY VILLAS	115-116	NNE						
Restored	02-Jun	TCD / JETTY VILLAS	115-116	NNE						
Restored	02-Jun	TCD / GULF N BAY	116-117	NNE						

MOTE MARINE LABORATORY

Sea Turtle Monitoring, Venice Beach. Summary Report for 2000 ~ MML Technical Report 732, 12/29/00

Appendix Table C. (Continued)

<u>Status</u>	<u>Date</u>	<u>ADDRESS</u>	<u>FLDNR</u>	<u>Nest</u> <u>NNE</u>	<u>Moved</u>	<u>Type</u> <u>Screen</u>	<u>Date</u> <u>Hatched</u>	<u>How destroyed</u>	<u>No.</u> <u>Hatched</u>	<u>Total</u> <u>Eggs</u>
Restored	02-Jun	TCD / ALOHA APTS	116-117	NNE						
Restored	02-Jun	TCD / SAN MARCO	117-118	NNE						
Restored	02-Jun	TCD	118-119	NNE						
Restored	02-Jun	TCD / ORLEANS	118-119	Poss.						
Restored	02-Jun	TCD / GULF TWIN TOWERS	119-120	Nest					0	122
Restored	02-Jun	ESPLANADE / GULF TWIN TOWERS	119-120	NNE						
Restored	02-Jun	ALHAMBRA / VALENCIA	122-123	NNE						
Restored	02-Jun	ALHAMBRA / VALENCIA	122-123	NNE						
Restored	02-Jun	ALHAMBRA / VALENCIA	122-123	NNE						
Restored	02-Jun	PARK BLVD / ALDEA MAR	123-124	NNE						
Restored	02-Jun	LITTLE LAKE / R-129 TO R-130	129-130	NNE						
Natural	02-Jun	NORTH CASPERSON PUBLIC BEACH / R-136 TO R-137	136-137	NNE						
Restored	03-Jun	LITTLE LAKE / R-129 TO R-130	129-130	NNE						
Restored	03-Jun	NORTH VENICE PIER / R-130 TO T-131	130-131	NNE						
Natural	03-Jun	NORTH CASPERSON PUBLIC BEACH / R-136 TO R-137	136-137	Nest		Box	22-Jul		114	144
Natural	03-Jun	NORTH CASPERSON PUBLIC BEACH / R-136 TO R-137	136-137	NNE						
Restored	04-Jun	TCD / YACHT CLUB APTS	116-117	NNE						
Restored	04-Jun	TCD / GULF & BAY	116-117	NNE						
Restored	04-Jun	FLAMINGO / ISLAND SHORES	124-125	NNE						
Restored	04-Jun	GBB / WINDSONG VILLAS	125-126	NNE						
Restored	04-Jun	SUNSET BLVD	127-128	NNE						
Restored	04-Jun	LITTLE LAKE / R-129 TO R-130	129-130	NNE						
Restored	05-Jun	TCD / YACHT CLUB APTS	116-117	Poss.						
Restored	05-Jun	TCD TO 1000 TCD / BAHIA MAR-HARBOR HOUSE	117-118	Nest			21-Jul		90	100
Restored	05-Jun	ESPLANADE / SAN SOVINO	118-119	Nest			21-Jul		41	113
Restored	05-Jun	OCALA	121-122	NNE						
Restored	05-Jun	CORNWALL ON THE GULF NORTH	123-124	Nest			26-Jul	IN - WASHED OVER BY TIDES 7/2, 7/15-16	10	127
Restored	05-Jun	FLAMINGO	124-125	NNE						
Restored	05-Jun	GBB / BEACHCOMBER	125-126	Poss.				IN (WASHED OUT) 8/5-6		
Restored	05-Jun	SERVICE CLUB PARK / R-129 TO R-130	129-130	NNE						
Restored	05-Jun	LITTLE LAKE / R-129 TO R-130	129-130	NNE						

MOTE MARINE LABORATORY

Sea Turtle Monitoring, Venice Beach. Summary Report for 2000 ~ MML Technical Report 732, 12/29/00

Page 30

Appendix Table C. (Continued)

<u>Status</u>	<u>Date</u>	<u>ADDRESS</u>	<u>FLDNR</u>	<u>Nest</u> <u>NNE</u>	<u>Moved</u>	<u>Type</u> <u>Screen</u>	<u>Date</u> <u>Hatched</u>	<u>How destroyed</u>	<u>No.</u> <u>Hatched</u>	<u>Total</u> <u>Eggs</u>
Restored	05-Jun	SEWAGE TREATMENT PLANT / T-131 TO R-132	131-132	NNE						
Natural	05-Jun	VENICE GOLF CLUB / R-134 TO R-135	134-135	NNE						
Natural	05-Jun	HORSE & CHAISE POINT / R-135 TO R-136	135-136	NNE						
Natural	05-Jun	HORSE & CHAISE POINT / R-135 TO R-136	135-136	NNE						
Restored	06-Jun	TCD / SAN MARCO	117-118	Nest			21-Jul		126	147
Restored	06-Jun	TCD / TOWERS	117-118	NNE						
Restored	06-Jun	TCD / SEA VILLAS	117-118	NNE						
Restored	06-Jun	TCD / ORLEANS	118-119	NNE						
Restored	06-Jun	ESPLANADE / IMPERIAL HOUSE	119-120	Nest			25-Jul		85	113
Restored	06-Jun	ESPLANADE / GULF TWIN TOWERS-GULF HORIZON	119-120	NNE						
Restored	06-Jun	ALHAMBRA / VALENCIA-VENICE SANDS	122-123	NNE						
Restored	06-Jun	GIBB	126-127	Nest	Yes		22-Jul	DIS 7/22	86	100
Restored	06-Jun	SEWAGE TREATMENT PLANT / R-132 TO R-133	132-133	NNE						
Natural	06-Jun	BROHARD BEACH PARK / R-133 TO R-134	133-134	Nest		Box	03-Aug	IN - WASHED OVER MID-JULY	2	97
Natural	06-Jun	VENICE GULF CLUB / R-134 TO R-135	134-135	NNE						
Natural	06-Jun	HORSE & CHAISE POINT / R-135 TO R-136	135-136	NNE						
Restored	07-Jun	TCD / GULF N BAY	116-117	NNE						
Restored	07-Jun	TCD	118-119	NNE						
Restored	07-Jun	ESPLANADE / GULF HORIZON	119-120	NNE						
Restored	07-Jun	ESPLANADE / CIRCLE K	119-120	NNE						
Restored	07-Jun	VENICE PUBLIC BEACH PAVILION (NORTH)	120-121	NNE						
Restored	07-Jun	OCALA	121-122	NNE						
Restored	07-Jun	OCALA	121-122	NNE						
Restored	07-Jun	HUNTER	123-124	NNE						
Restored	07-Jun	PARK BLVD / ALDEA MAR (SOUTH END)	123-124	NNE						
Restored	07-Jun	SUNSET DR	128-129	Nest			28-Jul		99	106
Restored	07-Jun	N VENICE PIER / R-130 TO T-131	130-131	Nest		Box	27-Jul		101	111
Restored	07-Jun	NORTH VENICE PIER / R-130 TO T-131	130-131	NNE						
Natural	07-Jun	VENICE GOLF CLUB / R-134 TO R-135	134-135	NNE						
Natural	07-Jun	RED LAKE / R-134 TO R-135	134-135	NNE						
Natural	07-Jun	HORSE & CHAISE POINT / R-135 TO R-136	135-136	NNE						

MOTE MARINE LABORATORY

Sea Turtle Monitoring, Venice Beach. Summary Report for 2000 ~ MML Technical Report 732, 12/29/00

Appendix Table C. (Continued)

<u>Status</u>	<u>Date</u>	<u>ADDRESS</u>	<u>FLDNR</u>	<u>Nest</u> <u>NNE</u>	<u>Moved</u>	<u>Type</u> <u>Screen</u>	<u>Date</u> <u>Hatched</u>	<u>How destroyed</u>	<u>No.</u> <u>Hatched</u>	<u>Total</u> <u>Eggs</u>
Natural	07-Jun	HORSE & CHAISE POINT / R-135 TO R-136	135-136	NNE						
Natural	07-Jun	HORSE & CHAISE POINT / R-135 TO R-136	135-136	NNE						
Natural	07-Jun	HORSE & CHAISE POINT / R-136 TO R-137	136-137	NNE						
Natural	07-Jun	HORSE & CHAISE POINT / R-136 TP R-137	136-137	NNE						
Natural	07-Jun	NORTH CASPERSON PUBLIC BEACH / R-137 TO R-138	137-138	NNE						
Restored	08-Jun	TCD / SEA VILLAS	117-118	NNE						
Restored	08-Jun	OCALA	121-122	NNE						
Restored	08-Jun	ALHAMBRA / VALENCIA	122-123	Nest				IN - WASHED OVER BY TIDES 7/2, 7/15-16	1	103
Restored	08-Jun	GULF SIDE CORNWALL SOUTH	123-124	Nest			29-Jul		113	117
Restored	08-Jun	FLAMINGO / ISLAND SHORES	124-125	NNE						
Restored	08-Jun	VILLAS DRIVE / VENICE VILLAS (N OF GAZEBO)	124-125	NNE						
Restored	08-Jun	SUNSET DR	127-128	Nest			02-Aug		64	67
Restored	08-Jun	NORTH VENICE PIER / R-130 TO T-131	130-131	NNE						
Natural	08-Jun	VENICE GOLF CLUB / R-134 TO R-135	134-135	NNE						
Natural	08-Jun	HORSE & CHAISE POINT	135-136	Nest	Yes	Box	27-Jul	IN(WASHED OUT) 7/3	13	
Natural	08-Jun	NORTH CASPERSON PUBLIC BEACH / R-136 TO R-137	136-137	NNE						
Restored	09-Jun	TCD / ALOHA APTS	116-117	Nest			28-Jul		88	94
Restored	09-Jun	TCD / SAN MARCO	117-118	Nest			28-Jul		93	95
Restored	09-Jun	PARK BLVD / ALDEA MAR	123-124	Nest				IN - WASHED OVER BY TIDES 7/2, 7/15-16	11	121
Restored	09-Jun	SUNSET DR	128-129	Nest			28-Jul	DEP / CRAB	60	123
								IN - WASHED OVER & UNDER STANDING		
Natural	09-Jun	BROHARD BEACH PARK / R-133 TO R-134	133-134	Nest		Box	27-Jul	WATER	80	110
Natural	09-Jun	BROHARD BEACH PARK / R-133 TO R-134	133-134	Nest		Box	28-Jul		91	93
Natural	09-Jun	RED LAKE / R-134 TO R-135	134-135	Nest		Box	08-Aug		79	94
Natural	09-Jun	NORTH CASPERSON PUBLIC BEACH / R-136 TO R-137	136-137	Nest		Box	27-Jul		68	80
Natural	09-Jun	NORTH CASPERSON PUBLIC BEACH / R-136 TO R-137	136-137	NNE						
Restored	10-Jun	VENICE PUBLIC BEACH	120-121	NNE						
Restored	10-Jun	ALHAMBRA / VENICE SANDS (BY PARKING LOT)	122-123	Nest			03-Aug		93	96
Restored	10-Jun	ALHAMBRA / VALENCIA (B/W 2 SOUTHERN CONDOS)	122-123	Nest				DIS 8/6. 2 RECORDED AS DAMAGED NO CAUSE GIVEN	101	108
Natural	10-Jun	RED LAKE / R-135 TO R-136	135-136	Nest		Box	30-Jul		67	99

MOTE MARINE LABORATORY

Appendix Table C. (Continued)

<u>Status</u>	<u>Date</u>	<u>ADDRESS</u>	<u>FLDNR</u>	<u>Nest</u> <u>NNE</u>	<u>Moved</u>	<u>Type</u> <u>Screen</u>	<u>Date</u> <u>Hatched</u>	<u>How destroyed</u>	<u>No.</u> <u>Hatched</u>	<u>Total</u> <u>Eggs</u>
Restored	11-Jun	ALHAMBRA / VALENCIA	122-123	Nest			05-Aug		75	86
Restored	11-Jun	GBB / MACARTHUR BEACH & RACQUET CLUB	125-126	Nest	Yes		03-Aug		95	119
Restored	11-Jun	GBB	126-127	NNE						
Natural	11-Jun	HORSE & CHAISE POINT / R-135 TO R-136	135-136	Nest		Box	31-Jul	IN(WASHED OVER) EARLY JULY	44	100
Natural	11-Jun	HORSE & CHAISE POINT / R-135 TO R-136	135-136	Nest				DEP/RAC	0	
Natural	11-Jun	RED LAKE / R-135 TO R-136	135-136	NNE						
Restored	12-Jun	TCD TO 1255 TCD / QUARTERDECK - SAN MARCO	116-117	Nest			02-Aug		89	93
Restored	12-Jun	PARK BLVD / ALDEA MAR	123-124	Nest			01-Aug		117	164
Restored	12-Jun	PARK BLVD / ALDEA MAR (S OF OUTFALL #4)	123-124	Nest			05-Aug	1 EGG RECORDED AS BEING DAMAGED/NO CAUSE GIVEN	143	170
Restored	12-Jun	BCH RD / GULF SHORES	128-129	Poss.						
Restored	12-Jun	LITTLE LAKE / R-130	130-131	Nest	Yes	Box	02-Aug		85	105
Restored	12-Jun	BROHARD BEACH / R-132 TO R-133	132-133	NNE						
Restored	12-Jun	SEWAGE TREATMENT PLANT / R-132 TO R-133	132-133	NNE						
Restored	13-Jun	TCD / YACHT CLUB APTS	116-117	NNE						
Restored	13-Jun	TCD / ALOHA APTS	116-117	NNE						
Restored	13-Jun	TCD / SEA VILLAS	117-118	Nest					123	125
Restored	13-Jun	TCD / CHATEAUGAY	117-118	NNE						
Restored	13-Jun	GBB / BEACHCOMBER	125-126	Nest				IN (WASHED OVER) SEVERAL TIMES	113	114
Restored	13-Jun	DEER TOWN GULLEY / OUTFALL #8	127-128	NNE						
Restored	13-Jun	DEER CREEK FENCE	127-128	NNE						
Natural	13-Jun	RED LAKE / R-134 TO R-135	134-135	Nest		Box	02-Aug		95	100
Natural	13-Jun	RED LAKE / R-134 TO R-135	134-135	Nest		Box	02-Aug		68	92
Natural	13-Jun	NORTH CASPERSON PUBLIC BEACH / R-136 TO R-137	136-137	NNE						
Natural	13-Jun	NORTH CASPERSON PUBLIC BEACH / R-136 TO R-137	136-137	NNE						
Restored	14-Jun	TCD / YACHT CLUB APTS	116-117	Nest						
Restored	14-Jun	TCD / CHATEAUGAY	117-118	Nest					135	142
Restored	14-Jun	TCD / THE TOWERS	117-118	NNE						
Restored	14-Jun	TCD	118-119	NNE						
Restored	14-Jun	ESPLANADE / IMPERIAL HOUSE	119-120	Nest					4	123
Restored	14-Jun	ESPLANADE / IMPERIAL HOUSE	119-120	NNE						

MOTE MARINE LABORATORY

Appendix Table C. (Continued)

<u>Status</u>	<u>Date</u>	<u>ADDRESS</u>	<u>FLDNR</u>	<u>Nest</u> <u>NNE</u>	<u>Moved</u>	<u>Type</u> <u>Screen</u>	<u>Date</u> <u>Hatched</u>	<u>How destroyed</u>	<u>No.</u> <u>Hatched</u>	<u>Total</u> <u>Eggs</u>
Restored	14-Jun	PUBLIC BEACH PAVILION	120-121	Nest					93	110
Restored	14-Jun	ALHAMBRA / VALENCIA	122-123	NNE						
Restored	14-Jun	GBB	126-127	NNE						
Restored	14-Jun	SUNSET DRIVE	128-129	NNE						
Restored	14-Jun	SERVICE CLUB PARK / R-129 TO R-130	129-130	Nest		Box	03-Aug		94	101
Restored	14-Jun	LITTLE LAKE / R-130 TO T-131	130-131	NNE						
Natural	14-Jun	VENICE GOLF CLUB / R-133 TO R-134	133-134	Nest		Box	03-Aug	DEP/RAC	79	112
Natural	14-Jun	VENICE GOLF CLUB / R-133 TO R-134	133-134	Nest		Box	31-Jul		81	98
Natural	14-Jun	RED LAKE / R-135 TO R-136	135-136	NNE						
Natural	14-Jun	NORTH CASPERSON PUBLIC BEACH / R-136 TO R-137	136-137	NNE						
Restored	15-Jun	TCD / JETTY VILLAS	115-116	Nest					108	113
Restored	15-Jun	ESPLANADE / GULF TWIN TOWERS	119-120	NNE						
Restored	15-Jun	GBB	126-127	NNE						
Restored	15-Jun	SUNSET DR / GULF SHORES	128-129	Poss.						
Restored	15-Jun	SEWAGE TREATMENT PLANT / T-131 TO R-132	131-132	Nest		Box	05-Aug	DEP / RAC	74	86
Restored	15-Jun	SEWAGE TREATMENT PLANT / T-131 TO R-132	131-132	NNE						
Restored	15-Jun	SEWAGE TREATMENT PLANT / R-132 TO R-133	132-133	Nest		Box	17-Aug		92	99
Natural	15-Jun	NORTH CASPERSON PUBLIC BEACH / R-136 TO R-137	136-137	Nest		Box	01-Aug	DEP/RAC 6/15	77	110
Natural	15-Jun	NORTH CASPERSON PUBLIC BEACH / R-136 TO R-137	136-137	Nest		Box	01-Aug		60	169
Restored	16-Jun	TCD / ALOHA APARTMENTS	116-117	Nest					102	104
Restored	16-Jun	TCD / YACHT CLUB APTS	116-117	Nest					28	48
Restored	16-Jun	ESPLANADE / SAN SOVINO	118-119	Nest					77	90
Restored	16-Jun	ESPLANADE / BEST WESTERN-GULF HORIZON	118-119	NNE						
Restored	16-Jun	HUNTER	122-123	Nest				IN (WASHED OVER) 7/2,7/15,7/16,8/13	0	117
Natural	16-Jun	BROHARD BEACH PARK / R-133 TO R-134	133-134	NNE						
Natural	16-Jun	VENICE GOLF CLUB / R-134 TO R-135	134-135	Nest		Box	03-Aug	IN (WASHED OVER) EARLY JULY	42	74
Natural	16-Jun	RED LAKE / R-134 TO R-135	134-135	Nest				DEP/RAC 6/16	0	
Restored	17-Jun	TCD / BAHIA MAR	117-118	Nest					106	113
Restored	17-Jun	LITTLE LAKE / R-129 TO R-130	129-130	NNE						
Natural	17-Jun	BROHARD BEACH PARK / R-133 TO R-134	133-134	Nest				IN - WASHED OUT MID JULY		
Natural	17-Jun	VENICE GOLF CLUB / R-134 TO R-135	134-135	NNE						

MOTE MARINE LABORATORY

Appendix Table C. (Continued)

<u>Status</u>	<u>Date</u>	<u>ADDRESS</u>	<u>FLDNR</u>	<u>Nest</u> <u>NNE</u>	<u>Moved</u>	<u>Type</u> <u>Screen</u>	<u>Date</u> <u>Hatched</u>	<u>How destroyed</u>	<u>No.</u> <u>Hatched</u>	<u>Total</u> <u>Eggs</u>
Natural	17-Jun	HORSE & CHAISE POINT / R-135 TO R-136	135-136	Nest		Box	08-Aug		80	90
Natural	17-Jun	RED LAKE / R-135 TO R-136	135-136	Nest				DEP/RAC 6/17	0	
Natural	17-Jun	NORTH CASPERSON PUBLIC BEACH / R-136 TO R-137	136-137	NNE						
Restored	18-Jun	TCD / CHATEAUGAY	117-118	Nest						
Restored	18-Jun	ESPLANADE / TWIN TOWERS	119-120	Nest						
Restored	18-Jun	VALENCIA - ESPLANADE - VENICE PUBLIC BEACH	120-121	NNE						
Restored	18-Jun	NORTH VENICE PIER / R-130 TO T-131	130-131	NNE						
Natural	18-Jun	VENICE GOLF CLUB / R-134 TO R-135	134-135	Nest		Box	07-Aug		95	100
Natural	18-Jun	RED LAKE / R-134 TO R-135	134-135	NNE						
Natural	18-Jun	RED LAKE / R-135 TO R-136	135-136	Nest		Box	07-Aug	IN - WASHED OVER 7/16	0	121
Natural	18-Jun	HORSE & CHAISE POINT / R-135 TO R-136	135-136	Nest		Box	05-Aug		99	115
Natural	18-Jun	HORSE & CHAISE POINT / R-135 TO R-136	135-136	Nest				DEP/RAC 6/18	0	
Restored	19-Jun	TCD / GULF N BAY	116-117	NNE						
Restored	19-Jun	TCD / THE TOWERS	117-118	Nest					92	100
Restored	19-Jun	OCALA	121-122	Nest					80	97
Restored	19-Jun	GBB	126-127	Nest			08-Aug		123	139
Restored	19-Jun	SUNSET DR	127-128	Poss.						
Restored	19-Jun	SUNSET DR	128-129	Nest	Yes		08-Aug		79	79
Restored	19-Jun	NORTH VENICE PIER / R-130 TO T-131	130-131	NNE						
Natural	19-Jun	VENICE GOLF CLUB / R-134 TO R-135	134-135	Nest		Box	06-Aug		103	109
Natural	19-Jun	VENICE GOLF CLUB / R-134 TO R-135	134-135	NNE						
Natural	19-Jun	HORSE & CHAISE POINT / R-135 TO R-136	135-136	NNE						
Restored	20-Jun	TCD / THE TOWERS	117-118	Nest					95	100
Restored	20-Jun	HUNTER (SOUTH END)	122-123	Nest			08-Aug		140	146
Restored	20-Jun	ALHAMBRA / VALENCIA (SOUTH END)	122-123	Nest			09-Aug		106	110
Restored	20-Jun	GBB / MACARTHUR BEACH & RACQUET	125-126	NNE						
Restored	20-Jun	GBB	126-127	NNE						
Natural	20-Jun	RED LAKE / R-134 TO R-135	134-135	NNE						
Natural	20-Jun	HORSE & CHAISE POINT / R-135 TO R-136	135-136	Nest				DEP/RAC 6/20	0	
Natural	20-Jun	HORSE & CHAISE POINT / R-135 TO R-136	135-136	NNE						
Restored	21-Jun	GBB / MACARTHUR BEACH & RACQUET	125-126	NNE						

MOTE MARINE LABORATORY

Appendix Table C. (Continued)

<u>Status</u>	<u>Date</u>	<u>ADDRESS</u>	<u>FLDNR</u>	<u>Nest</u> <u>NNE</u>	<u>Moved</u>	<u>Type</u> <u>Screen</u>	<u>Date</u> <u>Hatched</u>	<u>How destroyed</u>	<u>No.</u> <u>Hatched</u>	<u>Total</u> <u>Eggs</u>
Restored	21-Jun	GBB / MACARTHUR BEACH & RACQUET	125-126	NNE						
Restored	21-Jun	GBB TO GBB / MACARTHUR TO GOLDEN BEACH	125-126	Poss.						
Restored	21-Jun	GBB	126-127	NNE						
Restored	21-Jun	SUNSET DRIVE	127-128	NNE						
Restored	21-Jun	SERVICE CLUB PARK /R-128 TO R-129	128-129	NNE						
Restored	21-Jun	SERVICE CLUB PARK / R-129 TO R-130	129-130	Nest		Box	12-Aug	IN - UNDER STANDING WATER 7/17	79	109
Restored	21-Jun	SEWAGE TREATMENT PLANT / T-131 TO R-132	131-132	Nest		Box	09-Aug	IN - WASHED OVER MID JULY	114	121
Natural	21-Jun	BROHARD BEACH / R-133 TO R-134	133-134	Nest		Box	09-Aug		113	117
Natural	21-Jun	RED LAKE / R-134 TO R-135	134-135	Nest			09-Aug	IN(WASHED OVER) (WASHING OUT) 8/13	42	72
Natural	21-Jun	HORSE & CHAISE POINT / R-135 TO R-136	135-136	Nest				DEP/RAC 6/21	0	
Natural	21-Jun	HORSE & CHAISE POINT / R-135 TO R-136	135-136	NNE						
Restored	22-Jun	S ESPLANADE	120-121	NNE						
Restored	22-Jun	CORNWALL ON THE GULF SOUTH	123-124	Nest			12-Aug	1 EGG DAMAGED/NO CAUSE GIVEN	139	152
Restored	22-Jun	GBB / VILLAS ON GOLDEN BEACH	126-127	Nest	Yes		09-Aug		88	127
Restored	22-Jun	SEWAGE TREATMENT PLANT / T-131 TO R-132	131-132	Nest		Box	09-Aug		65	84
Natural	22-Jun	VENICE GOLF CLUB / R-134 TO R-135	134-135	NNE						
Natural	22-Jun	RED LAKE / R-134 TO R-135	134-135	NNE						
Restored	23-Jun	TCD / JETTY VILLAS	115-116	NNE						
Restored	23-Jun	TCD / ORLEANS	118-119	NNE						
Restored	23-Jun	ESPLANADE / IMPERIAL HOUSE	119-120	NNE						
Restored	23-Jun	OUTFALL #1	121-122	NNE						
Restored	23-Jun	GBB / BEACHCOMBER	125-126	Poss.						
Restored	23-Jun	SUNSET DRIVE	128-129	Nest			10-Aug		90	98
Natural	23-Jun	RED LAKE / R-134 TO R-135	134-135	Nest		Box	23Jun01	DEP/RAC	10	
Natural	23-Jun	HORSE & CHAISE POINT / R-135 TO R-136	135-136	NNE						
Natural	23-Jun	HORSE & CHAISE POINT / R-135 TO R-136	135-136	NNE						
Natural	23-Jun	NORTH CASPERSON PUBLIC BEACH / R-136 TO R-137	136-137	NNE						
Restored	24-Jun	TCD / JETTY VILLAS	115-116	Nest	Yes			DEP/RAC 8/14	8	
Restored	24-Jun	TCD / YACHT CLUB APTS	116-117	Nest				IN (WASHED OVER) 8/14		
Restored	24-Jun	TCD / BAHIA MAR	117-118	Nest					90	94
Restored	24-Jun	CORNWALL ON THE GULF SOUTH	123-124	Nest			14-Aug	IN (WASHED OVER) 7/2,7/15,7/16	97	104

MOTE MARINE LABORATORY

Sea Turtle Monitoring, Venice Beach. Summary Report for 2000 ~ MML Technical Report 732, 12/29/00

Appendix Table C. (Continued)

<u>Status</u>	<u>Date</u>	<u>ADDRESS</u>	<u>FLDNR</u>	<u>Nest</u>	<u>Moved</u>	<u>Type</u>	<u>Date</u>	<u>How destroyed</u>	<u>No.</u>	<u>Total</u>
				<u>NNE</u>		<u>Screen</u>	<u>Hatched</u>		<u>Hatched</u>	<u>Eggs</u>
Restored	24-Jun	FLAMINGO / ISLAND SHORES	124-125	Nest					0	103
Restored	24-Jun	VILLAS DRIVE / VENICE VILLAS	124-125	NNE						
Restored	24-Jun	SUNSET DR / BERMUDA SUNSET	127-128	Nest			15-Aug		72	75
Restored	24-Jun	SUNSET DR	128-129	Poss.						
Restored	24-Jun	SUNSET DR	128-129	Poss.						
Restored	24-Jun	SEWAGE TREATMENT PLANT / T-131 TO R-132	131-132	Nest				IN - WASHED OUT MID JULY		
Natural	24-Jun	RED LAKE / R-134 TO R-135	134-135	NNE						
Natural	24-Jun	RED LAKE / R-135 TO R-136	135-136	NNE						
Natural	24-Jun	HORSE & CHAISE POINT / R-135 TO R-136	135-136	NNE						
Natural	24-Jun	HORSE & CHAISE POINT / R-135 TO R-136	135-136	NNE						
Restored	25-Jun	TCD	117-118	NNE						
Restored	25-Jun	ESPLANADE / SAN SOVINO	118-119	Nest						
Restored	25-Jun	FLAMINGO / SAN RAMON	124-125	Nest			21-Aug DIS 8/21		90	107
Restored	25-Jun	GBB / BERMUDA SUNSET	127-128	NNE						
Restored	25-Jun	SUNSET DRIVE	127-128	NNE						
Restored	25-Jun	SEWAGE TREATMENT PLANT / T-131 TO R-132	131-132	Nest		Box	16-Aug		87	88
Natural	25-Jun	BROHARD BEACH PARK / R-133 TO R-134	133-134	NNE						
Natural	25-Jun	BROHARD BEACH / R-133 TO R-134	133-134	NNE						
Natural	25-Jun	RED LAKE / R-135 TO R-136	135-136	NNE						
Natural	25-Jun	HORSE & CHAISE POINT / R-135 TO R-136	135-136	NNE						
Natural	25-Jun	NORTH CASPERSON PUBLIC BEACH / R-137 TO R-138	137-138	NNE						
Natural	26-Jun	VENICE GOLF CLUB / R-134 TO R-135	134-135	NNE						
Restored	27-Jun	TCD / ALOHA APTS	116-117	Nest				IN(WASHED OUT) 7/21		
Restored	27-Jun	TCD / YACHT CLUB APTS	116-117	Poss.						
Restored	27-Jun	GBB / MACARTHUR BEACH & RACQUET (S END)	125-126	Nest						
Restored	27-Jun	GBB / BEACHCOMBER	125-126	Nest	Yes		14-Aug		101	115
Natural	27-Jun	VENICE GOLF CLUB / R-134 TO R-135	134-135	Nest		Box		IN(WASHED OVER) MID-JULY & UNDER STANDING WATER	0	186
Natural	27-Jun	VENICE GOLF CLUB / R-134 TO R-135	134-135	NNE						
Natural	27-Jun	RED LAKE / R-136 TO R-137	136-137	Nest		Box	14-Aug		75	87
Natural	27-Jun	NORTH CASPERSON PUBLIC BEACH / R-136 TO R-137	136-137	Nest				DEP/RAC 6/27	0	

MOTE MARINE LABORATORY

Sea Turtle Monitoring, Venice Beach, Summary Report for 2000 ~ MMI, Technical Report 732, 12/29/00

Page 37

Appendix Table C. (Continued)

<u>Status</u>	<u>Date</u>	<u>ADDRESS</u>	<u>FLDNR</u>	<u>Nest</u> <u>NNE</u>	<u>Moved</u>	<u>Type</u> <u>Screen</u>	<u>Date</u> <u>Hatched</u>	<u>How destroyed</u>	<u>No.</u> <u>Hatched</u>	<u>Total</u> <u>Eggs</u>
Natural	27-Jun	NORTH CASPERSON PUBLIC BEACH / R-136 TO R-137	136-137	NNE						
Natural	27-Jun	NORTH CASPERSON PUBLIC BEACH / R-136 TO R-137	136-137	NNE						
Restored	28-Jun	TCD / CHATEAUGAY	117-118	Nest					80	93
Restored	28-Jun	TCD / HARBOR HOUSE	118-119	Nest			14-Aug		100	123
Restored	28-Jun	GBB	126-127	Nest			17-Aug		86	97
Natural	28-Jun	RED LAKE / R-135 TO R-136	135-136	NNE						
Restored	29-Jun	TCD / HARBOR HOUSE	118-119	Nest	Yes				94	111
Restored	29-Jun	SUNSET DR	127-128	Nest	Yes		18-Aug		61	63
Restored	29-Jun	SEWAGE TREATMENT PLANT / T-131 TO R-132	131-132	Nest	Yes	Box	17-Aug		75	95
Restored	29-Jun	SEWAGE TREATMENT PLANT / R-132 TO R-133	132-133	NNE						
Restored	29-Jun	SEWAGE TREATMENT PLANT / R-132 TO R-133	132-133	NNE						
Natural	29-Jun	BROHARD BEACH / R-133 TO R-134	133-134	Nest		Box	17-Aug		85	97
Restored	30-Jun	PARK BLVD / ALDEA MAR (N SECTION)	123-124	Nest			17-Aug		98	107
Natural	30-Jun	BROHARD BEACH PARK / R-133 TO R-134	133-134	NNE						
Natural	30-Jun	RED LAKE / R-134 TO R-135	134-135	Nest		Box	17-Aug	DEP/RAC	26	105
Natural	30-Jun	RED LAKE / R-135 TO R-136	135-136	Nest				DEP/RAC 7/30	0	
Natural	30-Jun	RED LAKE / R-136 TO R-137	136-137	NNE						
Natural	30-Jun	NORTH CASPERSON PUBLIC BEACH / R-137 TO R-138	137-138	Nest		Box		IN(WASHED OUT) 7/16		
Natural	30-Jun	NORTH CASPERSON PUBLIC BEACH / R-137 TO R-138	137-138	NNE						
Restored	01-Jul	TCD / BAHIA MAR	117-118	NNE						
Restored	01-Jul	TCD / ORLEANS	118-119	Nest					99	111
Restored	01-Jul	ESPLANADE / GULF TWIN TOWERS	119-120	NNE						
Restored	01-Jul	ESPLANADE / CIRCLE K	119-120	NNE						
Restored	01-Jul	VENICE PUBLIC BEACH	120-121	NNE						
Restored	01-Jul	S ESPLANADE	121-122	NNE						
Restored	01-Jul	S ESPLANADE	121-122	NNE						
Restored	01-Jul	HUNTER	122-123	NNE						
Restored	01-Jul	VALENCIA	125-126	Nest					103	118
Restored	01-Jul	SERVICE CLUB PARK / R-128 TO R-129	128-129	Nest		Box	18-Aug		59	71
Restored	01-Jul	COAST GUARD STATION / R-129 TO R-130	129-130	NNE						
Natural	01-Jul	BROHARD BEACH PARK / R-133 TO R-134	133-134	NNE						

MOTE MARINE LABORATORY

Sea Turtle Monitoring, Venice Beach. Summary Report for 2000 ~ MML Technical Report 732, 12/29/00

Appendix Table C. (Continued)

<u>Status</u>	<u>Date</u>	<u>ADDRESS</u>	<u>FLDNR</u>	<u>Nest</u> <u>NNE</u>	<u>Moved</u>	<u>Type</u> <u>Screen</u>	<u>Date</u> <u>Hatched</u>	<u>How destroyed</u>	<u>No.</u> <u>Hatched</u>	<u>Total</u> <u>Eggs</u>
Natural	01-Jul	BROHARD BEACH / R-133 TO R-134	133-134	NNE						
Natural	01-Jul	RED LAKE / R-134 TO R-135	134-135	Nest				DEP/RAC 7/1	0	
Natural	01-Jul	HORSE & CHAISE POINT / R-135 TO R-136	135-136	Nest				DEP/RAC 7/1	0	
Natural	01-Jul	NORTH CASPERSON PUBLIC BEACH / R-136 TO R-137	136-137	Nest		Box	24-Aug		96	102
Restored	02-Jul	ESPLANADE / SAN SOVINO	118-119	Nest					129	142
Restored	02-Jul	GBB / MACARTHUR BEACH & RACQUET	125-126	Nest	Yes		18-Aug		108	126
Restored	02-Jul	SUNSET DRIVE	128-129	NNE						
Restored	02-Jul	LITTLE LAKE / R-129 TO R-130	129-130	Nest			28-Aug		57	57
Natural	02-Jul	HORSE & CHAISE POINT / R-135 TO R-136	135-136	Nest		Box	20-Aug		126	140
Natural	02-Jul	HORSE & CHAISE POINT / R-135 TO R-136	135-136	Nest		Box	20-Aug		133	144
Natural	02-Jul	HORSE & CHAISE POINT / R-135 TO R-136	135-136	Nest		Box	21-Aug		85	93
Natural	02-Jul	NORTH CASPERSON PUBLIC BEACH / R-137 TO R-138	137-138	Nest			20-Aug		84	87
Restored	03-Jul	ALHAMBRA / VENICE SANDS (NORTH END)	122-123	NNE						
Restored	04-Jul	OCALA	121-122	NNE						
Restored	04-Jul	SEWAGE TREATMENT PLANT / T-131 TO R-132	131-132	Nest		Box	21-Aug	IN - WASHED OVER MID JULY	93	101
Restored	05-Jul	SUNSET DRIVE	127-128	NNE						
Natural	05-Jul	RED LAKE / R-134 TO R-135	134-135	Nest		Box	23-Aug		80	91
Natural	05-Jul	RED LAKE / R-135 TO R-136	135-136	NNE						
Natural	05-Jul	NORTH CASPERSON PUBLIC BEACH / R-136 TO R-137	136-137	NNE						
Restored	06-Jul	TCD / BAHIA VISTA	116-117	Nest					85	93
Restored	06-Jul	TCD / CHATEAUGAY	117-118	Nest					79	87
Restored	06-Jul	ESPLANADE / IMPERIAL HOUSE	119-120	Nest					80	80
Restored	06-Jul	ESPLANADE / N IMPERIAL HOUSE	119-120	NNE						
Restored	06-Jul	ALHAMBRA / VENICE SANDS	122-123	NNE						
Restored	06-Jul	ALHAMBRA / VALENCIA	122-123	NNE						
Restored	06-Jul	FLAMINGO / ISLAND SHORES	124-125	NNE						
Restored	06-Jul	GBB / BEACHCOMBER	125-126	Poss.						
Restored	06-Jul	SUNSET DR	128-129	Nest			22-Aug		85	91
Natural	06-Jul	VENICE GOLF CLUB / R-134 TO R-135	134-135	NNE						
Restored	07-Jul	TCD / TOWERS	117-118	NNE						
Restored	07-Jul	TCD / BAHIA MAR	117-118	NNE						

MOTE MARINE LABORATORY

Appendix Table C. (Continued)

<u>Status</u>	<u>Date</u>	<u>ADDRESS</u>	<u>FLDNR</u>	<u>Nest</u>	<u>Moved</u>	<u>Type</u>	<u>Date</u>	<u>How destroyed</u>	<u>No.</u>	<u>Total</u>
				<u>NNE</u>		<u>Screen</u>	<u>Hatched</u>		<u>Hatched</u>	<u>Eggs</u>
Restored	07-Jul	TCD / BEST WESTERN	118-119	Nest					91	108
Restored	07-Jul	PARK BLVD / ALDEA MAR (150' N OF OUTFALL PIPE)	123-124	NNE						
Restored	07-Jul	GBB / MACARTHUR BEACH & RACQUET	125-126	NNE						
Restored	07-Jul	GBB / MACARTHUR BEACH & RACQUET	125-126	NNE						
Restored	07-Jul	GBB / VILLAS ON GOLDEN BEACH	126-127	Nest			25-Aug DIS 8/25		83	92
Restored	07-Jul	COAST GUARD STATION / R-129 TO R-130	129-130	NNE						
Restored	07-Jul	NORTH VENICE PIER / R-130 TO T-131	130-131	NNE						
Restored	08-Jul	TCD / JETTY VILLAS	115-116	Nest						
Restored	08-Jul	TCD / YACHT CLUB APTS	116-117	NNE						
Restored	08-Jul	TCD / YACHT CLUB APTS	116-117	NNE						
Restored	08-Jul	TCD / BAHIA VISTA	116-117	NNE						
Restored	08-Jul	TCD / BAHIA VISTA	116-117	NNE						
Restored	08-Jul	TCD / THE TOWERS	117-118	NNE						
Restored	08-Jul	TCD / THE TOWERS	117-118	NNE						
Restored	08-Jul	LITTLE LAKE / 500 FT N OF OUTFALL #9	129-130	NNE						
Natural	08-Jul	VENICE GOLF CLUB / R-133 TO R-134	133-134	Nest				DEP/RAC	0	
Natural	08-Jul	VENICE GOLF CLUB / R-133 TO R-134	133-134	NNE						
Natural	08-Jul	HORSE & CHAISE POINT / R-135 TO R-136	135-136	Nest				DEP/RAC	0	
Restored	09-Jul	TCD / BAHIA VISTA	116-117	NNE						
Restored	09-Jul	TCD / BAHIA VISTA	116-117	NNE						
Restored	09-Jul	TCD / ALOHA APT	116-117	NNE						
Restored	09-Jul	TCD / BAHIA MAR	117-118	Poss.						
Restored	09-Jul	TCD	118-119	Nest					111	134
Restored	09-Jul	FLAMINGO / SAN RAMON	124-125	NNE						
Restored	09-Jul	SERVICE CLUB PARK / R-128 TO R-129	128-129	NNE						
Restored	09-Jul	SEWAGE TREATMENT PLANT / T-131 TO R-132	131-132	Nest		Box	28-Aug		120	140
Restored	09-Jul	SOUTH VENICE PIER - PICNIC AREA / T-131 TO R-132	131-132	NNE						
Natural	09-Jul	HORSE & CHAISE POINT / R-135 TO R-136	135-136	NNE						
Restored	10-Jul	ESPLANADE	121-122	Nest						
Restored	10-Jul	GBB / MACARTHUR BEACH & RACQUET	125-126	NNE						
Restored	10-Jul	GBB / MACARTHUR BEACH & RACQUET	125-126	NNE						

MOTE MARINE LABORATORY

Sea Turtle Monitoring, Venice Beach. Summary Report for 2000 ~ MML Technical Report 732, 12/29/00

Appendix Table C. (Continued)

<u>Status</u>	<u>Date</u>	<u>ADDRESS</u>	<u>FLDNR</u>	<u>Nest</u> <u>NNE</u>	<u>Moved</u>	<u>Type</u> <u>Screen</u>	<u>Date</u> <u>Hatched</u>	<u>How destroyed</u>	<u>No.</u> <u>Hatched</u>	<u>Total</u> <u>Eggs</u>
Restored	10-Jul	SERVICE CLUB PARK / R-129 TO R-130	129-130	NNE						
Restored	10-Jul	SERVICE CLUB PARK / R-129 TO R-130	129-130	NNE						
Natural	10-Jul	VENICE GOLF CLUB / R-134 TO R-135	134-135	Nest		Box	27-Aug		96	106
Natural	10-Jul	RED LAKE / R-134 TO R-135	134-135	NNE						
Natural	10-Jul	HORSE & CHAISE POINT / R-135 TO R-136	135-136	NNE						
Natural	10-Jul	NORTH CASPERSON PUBLIC BEACH / R-136 TO R-137	136-137	NNE						
Restored	11-Jul	ESPLANADE / CIRCLE K	119-120	NNE						
Restored	11-Jul	GBB / VILLAS ON GOLDEN BEACH	126-127	NNE						
Restored	11-Jul	SEWAGE TREATMENT PLANT / R-132 TO R-133	132-133	Nest		Box	31-Aug	DEP / RAC; IN - UNDERWATER	20	90
Restored	11-Jul	SEWAGE TREATMENT PLANT / R-132 TO R-133	132-133	Nest		Box		DEP / RAC	0	
Restored	11-Jul	BROHARD BEACH PARK / R-132 TO R-133	132-133	NNE						
Natural	11-Jul	VENICE GOLF CLUB / R-134 TO R-135	134-135	Nest		Box	29-Aug	IN(UNDER STANDING WATER) MID JULY	14	102
Restored	12-Jul	TCD TO 1325 TCD / ALOHA & YACHT CLUB APTS	116-117	Nest	Yes				80	86
Restored	12-Jul	TCD / SAN MARCO	117-118	NNE						
Restored	12-Jul	TCD / SAN MARCO	117-118	NNE						
Restored	12-Jul	ALHAMBRA / VENICE SANDS	122-123	NNE						
Restored	12-Jul	SUNSET DRIVE - GULF SHORES ACCESS	128-129	NNE						
Restored	12-Jul	SEWAGE TREATMENT PLANT / R-132 TO R-133	132-133	NNE						
Natural	12-Jul	VENICE GOLF CLUB / R-133 TO R-134	133-134	Nest			30-Aug		21	108
Natural	12-Jul	RED LAKE / R-135 TO R-136	135-136	NNE						
Natural	12-Jul	RED LAKE / R-135 TO R-136	135-136	NNE						
Natural	12-Jul	RED LAKE / R-135 TO R-136	135-136	NNE						
Natural	12-Jul	HORSE & CHAISE POINT / R-135 TO R-136	135-136	NNE						
Natural	12-Jul	NORTH CASPERSON PUBLIC BEACH / R-136 TO R-137	136-137	NNE						
Natural	12-Jul	NORTH CASPERSON BEACH / R-137 TO R-138	137-138	Nest		Box	31-Aug		96	105
Restored	13-Jul	TCD / BAHIA VISTA	116-117	NNE						
Restored	13-Jul	TCD / SEA VILLAS	117-118	Nest					99	114
Restored	13-Jul	TCD / CHATEAUGAY	117-118	Nest					75	78
Restored	13-Jul	ESPLANADE / SAN SOVINO	118-119	NNE						
Restored	13-Jul	ESPLANADE / GULF SHORES	119-120	NNE						
Restored	13-Jul	ESPLANADE	121-122	NNE						

MOTE MARINE LABORATORY

Appendix Table C. (Continued)

<u>Status</u>	<u>Date</u>	<u>ADDRESS</u>	<u>FL/DNR</u>	<u>Nest</u> <u>NNE</u>	<u>Moved</u>	<u>Type</u> <u>Screen</u>	<u>Date</u> <u>Hatched</u>	<u>How destroyed</u>	<u>No.</u> <u>Hatched</u>	<u>Total</u> <u>Eggs</u>
Restored	13-Jul	550 FLAMINGO / ISLAND SHORES (N END BY BCH ACCESS)	124-125	NNE						
Restored	13-Jul	SERVICE CLUB PARK / R-128 TO R-129	128-129	NNE						
Natural	13-Jul	HORSE & CHAISE POINT / R-135 TO R-136	135-136	Nest				DEP/RAC 7/13	0	
Natural	13-Jul	RED LAKE / R-135 TO R-136	135-136	Nest				DEP/RAC 7/13	0	
Natural	13-Jul	HORSE & CHAISE POINT / R-135 TO R-136	135-136	NNE						
Restored	14-Jul	TCD / GULF N BAY	116-117	Nest					80	82
Restored	14-Jul	PARK BLVD / ALDEA MAR (SOUTH END)	123-124	NNE						
Restored	14-Jul	GBB / MACARTHUR BEACH & RACQUET	125-126	Nest	Yes		01-Sep00		72	137
Restored	14-Jul	SUNSET DRIVE	127-128	Nest	Yes				86	100
Restored	14-Jul	GBB / BERMUDA SUNSET	127-128	NNE						
Restored	14-Jul	SEWAGE TREATMENT PLANT / R-132 TO R-133	132-133	Nest		Box	31-Aug	DEP / RAC	6	48
Restored	15-Jul	GBB / MACARTHUR BEACH & RACQUET	125-126	Nest						
Restored	15-Jul	GBB / MACARTHUR BEACH & RACQUET	125-126	NNE						
Restored	15-Jul	GBB	126-127	Nest			02-Sep		87	93
Restored	15-Jul	SEWAGE TREATMENT PLANT / T-131 TO R-132	131-132	Nest		Box	01-Sep		75	77
Restored	15-Jul	SEWAGE TREATMENT PLANT / T-131 TO R-132	131-132	Nest		Box	07-Sep		83	128
Natural	15-Jul	VENICE GOLF CLUB / R-133 TO R-134	133-134	NNE						
Natural	15-Jul	HORSE & CHAISE POINT / R-135 TO R-136	135-136	Nest				DEP/RAC 7/15		
Natural	16-Jul	HORSE & CHAISE POINT / R-135 TO R-136	135-136	Nest				DEP/RAC 7/16		
Restored	17-Jul	PARK BLVD / ALDEA MAR (N OF BROWN WALK)	123-124	NNE						
Restored	17-Jul	GBB / BEACHCOMBER	125-126	NNE						
Restored	17-Jul	SUNSET DR	128-129	Nest	Yes		04-Sep		100	110
Natural	17-Jul	RED LAKE / R-134 TO R-135	134-135	Nest				DEP/RAC 7/17	0	
Restored	18-Jul	TCD / SAN MARCO	117-118	NNE						
Restored	18-Jul	ESPLANADE / CIRCLE K	119-120	NNE						
Restored	18-Jul	ALHAMBRA / VALENCIA (NORTH END)	122-123	NNE						
Restored	18-Jul	VILLAS DRIVE / VENICE VILLAS	124-125	NNE						
Restored	18-Jul	GBB / MACARTHUR BEACH & RACQUET	125-126	NNE						
Restored	18-Jul	COAST GUARD STATION / R-129 TO R-130	129-130	Nest		Box	07-Sep		43	74
Restored	18-Jul	LITTLE LAKE / R-129 TO R-130	129-130	Nest		Box	04-Sep		90	93
Restored	18-Jul	N VENICE PIER / R-130 TO T-131	130-131	Nest		Box	04-Sep		79	85

MOTE MARINE LABORATORY

Sea Turtle Monitoring, Venice Beach. Summary Report for 2000 ~ MML Technical Report 732, 12/29/00

Appendix Table C. (Continued)

<u>Status</u>	<u>Date</u>	<u>ADDRESS</u>	<u>FLDNR</u>	<u>Nest</u> <u>NNE</u>	<u>Moved</u>	<u>Type</u> <u>Screen</u>	<u>Date</u> <u>Hatched</u>	<u>How destroyed</u>	<u>No.</u> <u>Hatched</u>	<u>Total</u> <u>Eggs</u>
Restored	18-Jul	NORTH VENICE PIER / R-130 TO T-131	130-131	NNE						
Restored	18-Jul	SEWAGE TREATMENT PLANT / R-132 TO R-133	132-133	NNE						
Natural	18-Jul	HORSE & CHAISE POINT / R-135 TO R-136	135-136	NNE						
Restored	19-Jul	TCD / SEA VILLAS	117-118	Nest					61	64
Restored	19-Jul	TCD / CHATEAUGAY	117-118	NNE						
Restored	19-Jul	TCD / BAHIA MAR	117-118	NNE						
Restored	19-Jul	TCD / HARBOR HOUSE	118-119	Nest					90	101
Restored	19-Jul	GBB / BERMUDA SUNSET	127-128	NNE						
Restored	19-Jul	BCH RD / GULF SHORES	128-129	Nest			10-Sep		64	77
Restored	19-Jul	SEWAGE TREATMENT PLANT / R-132 TO R-133	132-133	NNE						
Natural	19-Jul	RED LAKE / R-135 TO R-136	135-136	Nest				DEP/RAC 7/19	0	
Natural	19-Jul	RED LAKE / R-135 TO R-136	135-136	NNE						
Natural	19-Jul	HORSE & CHAISE POINT / R-135 TO R-136	135-136	NNE						
Natural	19-Jul	HORSE & CHAISE POINT / R-135 TO R-136	135-136	Poss.				IN(WASHED OUT) 7/19		
Natural	19-Jul	NORTH CASPERSON PUBLIC BEACH / R-136 TO R-137	136-137	Nest				DEP/RAC 7/19	0	
Restored	20-Jul	TCD / CHATEAUGAY	117-118	Nest					58	64
Restored	20-Jul	GBB	126-127	Nest				IN - WASHED OUT 9/16		
Restored	20-Jul	GBB	126-127	Nest			10-Sep		56	61
Natural	20-Jul	RED LAKE / R-134 TO R-135	134-135	Nest		Box	08-Sep	DEP/RAC 7/20	12	120
Natural	20-Jul	VENICE GOLF CLUB / R-134 TO R-135	134-135	Nest		Box	06-Sep	DEP/RAC	39	117
Restored	21-Jul	GBB	126-127	Nest	Yes		06-Sep		60	69
Natural	21-Jul	NORTH CASPERSON PUBLIC BEACH / R-136 TO R-137	136-137	NNE						
Restored	22-Jul	ESPLANADE	120-121	NNE						
Restored	22-Jul	FLAMINGO / SAN RAMON	124-125	NNE						
Restored	22-Jul	GOLDEN BCH	126-127	Nest			10-Sep		61	91
Restored	22-Jul	LITTLE LAKE / R-129 TO R-130	129-130	NNE						
Restored	23-Jul	TCD / BAHIA MAR	117-118	Nest					78	90
Restored	23-Jul	VALENCIA	121-122	NNE						
Restored	23-Jul	ALHAMBRA / VENICE SANDS	122-123	NNE						
Restored	23-Jul	HUNTER	123-124	NNE						
Restored	23-Jul	SUNSET DRIVE	127-128	NNE						

MOTE MARINE LABORATORY

Appendix Table C. (Continued)

<u>Status</u>	<u>Date</u>	<u>ADDRESS</u>	<u>FLDNR</u>	<u>Nest</u> <u>NNE</u>	<u>Moved</u>	<u>Type</u> <u>Screen</u>	<u>Date</u> <u>Hatched</u>	<u>How destroyed</u>	<u>No.</u> <u>Hatched</u>	<u>Total</u> <u>Eggs</u>
Restored	23-Jul	SUNSET DRIVE	128-129	Nest			10-Sep		82	89
Restored	24-Jul	TCD / BAHIA VISTA	116-117	Nest	Yes				92	96
Restored	24-Jul	ESPLANADE / GULF TWIN TOWERS (WALKWAY)	119-120	Nest					82	94
Restored	24-Jul	VENICE PUBLIC BEACH (S. PAVILLION)	120-121	Nest					78	93
Restored	24-Jul	FLAMINGO / ISLAND SHORES (NORTH END)	124-125	NNE						
Restored	24-Jul	FLAMINGO / SAN RAMON	124-125	NNE						
Restored	25-Jul	ESPLANADE / GULF HORIZON	119-120	Nest			15-Sep		43	57
Natural	25-Jul	VENICE GOLF CLUB / R-134 TO R-135	134-135	Nest		Box	11-Sep		33	107
Restored	26-Jul	ALHAMBRA / VENICE SANDS	122-123	Nest				IN (WASHED OUT) 9/17		
Restored	26-Jul	NORTH CITY PIER / PARKING LOT / R-130 TO T-131	130-131	Nest		Box	11-Sep		101	120
Restored	28-Jul	GULF SHORES	128-129	Poss.				IN - WASHED OUT 9/16		
Restored	29-Jul	TCD / BAHIA MAR	117-118	NNE						
Restored	30-Jul	FLAMINGO / ISLAND SHORES	124-125	Nest				IN (WASHED OUT) 9/17		
Restored	30-Jul	FLAMINGO / ISLAND SHORES (NORTH)	124-125	Nest				IN (WASHED OUT) 9/17		
Restored	30-Jul	GBB	126-127	Nest			13-Sep		58	90
Restored	30-Jul	SEWAGE TREATMENT PLANT / T-131 TO R-132	131-132	NNE						
Natural	30-Jul	RED LAKE / R-134 TO R-135	134-135	NNE						
Restored	31-Jul	S ESPLANADE	120-121	Nest				IN(WASHED OUT) 9/17		
Restored	31-Jul	VENICE PUBLIC BEACH (LIFEGUARD STAND) - PAVILLION	120-121	Nest				IN(WASHED OUT) 9/17		
Restored	31-Jul	ESPLANADE	120-121	NNE						
Restored	31-Jul	ALHAMBRA / VALENCIA	122-123	Nest				IN (WASHED OUT) 9/17		
Restored	31-Jul	PARK BLVD / ALDEA MAR	123-124	Nest				IN (WASHED OUT) 9/17		
Restored	01-Aug	SEWAGE TREATMENT PLANT / T-131 TO R-132	131-132	Nest		Box		IN - WASHED OUT 9/17		
Natural	01-Aug	RED LAKE / R-134 TO R-135	134-135	Nest		Box		IN(WASHED OUT) 9/17		
Restored	07-Aug	ALHAMBRA / VENICE SANDS	122-123	Nest				IN (WASHED OUT) 9/17		
Restored	08-Aug	VEN PUBLIC BEACH (S. OF PAVILLION NEXT TO WALKWAY)	120-121	Nest			08Aug0	1 DIS 8/8 & DEP/ANT'S 8/8	84	94
Restored	10-Aug	CORNWALL ON GULF SOUTH (N END OF THE PROPERTY)	123-124	Nest			10Aug0	1 IN (WASHED OVER) 7/2,7/15,7/16	100	127
Restored	12-Aug	ALHAMBRA / VENICE SANDS	122-123	NNE						
Restored	12-Aug	GBB / MACARTHUR BEACH & RACQUET	125-126	NNE						
Natural	27-Aug	NORTH CASPERSON PUBLIC BEACH / R-136 TO R-137	136-137	Nest				DEP/RAC 8/27		

Appendix D

**FLORIDA FISH AND WILDLIFE CONSERVATION COMMISSION
NESTING SURVEY REPORTING FORM FOR 2000**

Principal Permit Holder: <u>Jerris Foote</u>		Permit Number: <u>028</u>	
Beach Name: <u>Venice Bchs</u>			
	<i>C. caretta</i> (Loggerhead)	<i>C. mydas</i> (Green Turtle)	<i>D. coriacea</i> (Leatherback)
Total # of Nests	<u>275</u>	<u>0</u>	<u>0</u>
Total # of Non-Nesting Emergences (False Crawls)	<u>312</u>	<u>0</u>	<u>0</u>
Date (month and day) of First Documented Nest	<u>5/1/00</u>	<u>\</u>	<u>\</u>
Date (month and day) of Last Documented Nest	<u>8/27/00</u>	<u>\</u>	<u>\</u>
<p><i>In situ</i> Nest Data: <i>In situ</i> nests are those left where the turtle deposited the clutch. <i>In situ</i> nests may be left without additional protection, screened with a self-releasing flat screen, or covered with self-releasing or restraining above-ground cages. Record the number of nests by category and species. For each species, rows a + b + c + d should equal the total # of nests left <i>in situ</i>. Please check to make sure this is the case.</p>			
Total # of Nests Left <i>in situ</i> (a + b + c + d)	<u>253</u>	<u>\</u>	<u>\</u>
(a) # of <i>in situ</i> Nests without Additional Protection	<u>125</u>	<u>\</u>	<u>\</u>
(b) # of <i>in situ</i> Nests with Self-Releasing Flat Screen	<u>0</u>	<u>\</u>	<u>\</u>
(c) # of <i>in situ</i> Nests with Self-Releasing Cage	<u>78</u>	<u>\</u>	<u>\</u>
(d) # of <i>in situ</i> Nests with Restraining Cage	<u>0</u>	<u>\</u>	<u>\</u>
<p>Relocated Nest Data: Relocated nests are those where the clutch is removed from its original site of deposition and reburied at another site. These nests may be relocated to individual sites or as a group to a hatchery (a permanent or semi-permanent fenced or caged area where many nests are re-buried as a group). As with <i>in situ</i> nests, relocated nests may be left without additional protection, covered with a self-releasing flat screen, or covered with self-releasing or restraining above-ground cages. Hatcheries may be self-releasing (hatchlings escape unaided) or restraining (hatchlings cannot escape unaided). Record the number of nests by category and species. For each species, rows a + b + c + d + e + f should equal the total # of relocated nests. Please check to make sure this is the case.</p>			
Total # of Relocated Nests (a + b + c + d + e + f)	<u>22</u>	<u>\</u>	<u>\</u>
(a) # of Relocated Nests without Additional Protection	<u>19</u>	<u>\</u>	<u>\</u>
(b) # of Relocated Nests with Self-Releasing Flat Screen	<u>0</u>	<u>\</u>	<u>\</u>
(c) # of Relocated Nests with Self-Releasing Cage	<u>3</u>	<u>\</u>	<u>\</u>
(d) # of Relocated Nests with Restraining Cage	<u>0</u>	<u>\</u>	<u>\</u>
(e) # of Relocated to Self-Releasing Hatchery	<u>0</u>	<u>\</u>	<u>\</u>
(f) # of Relocated to Restraining Hatchery	<u>0</u>	<u>\</u>	<u>\</u>

FLORIDA FISH AND WILDLIFE CONSERVATION COMMISSION - NEST SUCCESS REPORTING FORM FOR 2000

SPECIES: *Caretta caretta* (Loggerhead)

DO NOT INCLUDE DEPREDATED NESTS

PRINCIPAL PERMIT HOLDER: Foote			BEACH NAME: Venice Behs							PERMIT NUMBER: 028
	TOTAL # OF NESTS	# OF NESTS MARKED TO EVALUATE	# OF NESTS ACTUALLY EVALUATED	# OF EGGS IN EVALUATED NESTS	# OF HATCHLINGS EMERGED	# OF LIVE HATCHLINGS IN NEST	# OF DEAD HATCHLINGS IN NEST	# OF PIPPED LIVE	# OF PIPPED DEAD	# OF UNHATCHED EGGS
IN SITU/NO ADDITIONAL PROTECTION	175	175	152	11222	8781	217	84	8	170	1960
IN SITU/FLAT SCREEN	0									
IN SITU/RESTRAINING CAGE	0									
IN SITU/SELF-RELEASING CAGE	78	78	67	7137	4785	129	216	4	104	1869
RELOCATED/NO ADDITIONAL PROTECTION	19	19	18	1865	1428	98	5	1	62	221
RELOCATED/FLAT SCREEN (NOT IN A HATCHERY)	0									
RELOCATED/RESTRAINING CAGE (NOT IN A HATCHERY)	0									
RELOCATED/SELF-RELEASING CAGE (NOT IN A HATCHERY)	3	3	2	200	158	2	0	6	4	30
RELOCATED/SELF-RELEASING HATCHERY	0									
RELOCATED/RESTRAINING HATCHERY	0									
OTHER (EXPLAIN)	0									
FWC USE ONLY										

DEFINITION OF TERMS:

IN SITU: CLUTCH WAS NOT RELOCATED FROM THE ORIGINAL SITE OF DEPOSITION
 RELOCATED: CLUTCH WAS RELOCATED FROM THE ORIGINAL SITE OF DEPOSITION
 SELF-RELEASING: A SCREEN, CAGE, OR HATCHERY THROUGH WHICH HATCHLINGS ESCAPE UNAIDED
 RESTRAINING: A SCREEN, CAGE, OR HATCHERY THAT DOES NOT ALLOW HATCHLINGS TO ESCAPE UNAIDED
 HATCHERY: A FENCED OR CAGED AREA WHERE MANY NESTS ARE REBURIED
 PIPPED: HATCHLING BROKEN THROUGH EGGSHELL BUT NOT COMPLETELY FREE OF EGGSHELL, NOT A HATCHED EGG

ADDITIONAL INFORMATION FOR SOME COLUMN HEADINGS:

OF EGGS IN EVALUATED NESTS: DIRECT COUNT IN RELOCATED NESTS, COUNT EGGSHELLS OF IN SITU NESTS
 # OF HATCHLINGS EMERGED: COUNT ONLY THOSE EMERGED UNAIDED (PRIOR TO NEST EVALUATION)
 # OF UNHATCHED EGGS: COUNT ONLY WHOLE, UNPIPPED EGGS

IMPORTANT: THE # OF HATCHLINGS EMERGED + # OF LIVE HATCHLINGS IN NEST + # OF DEAD HATCHLINGS IN NEST + # OF PIPPED LIVE + # OF PIPPED DEAD + # OF UNHATCHED EGGS SHOULD EQUAL THE # OF EGGS IN EVALUATED NESTS. PLEASE CHECK TO MAKE SURE THIS IS THE CASE.

Appendix E

MARINE TURTLE HATCHLING DISORIENTATION INCIDENT REPORT FORM

If you have any questions please contact the Florida Marine Research Institute at the
Tequesta Field Laboratory (561) 575-5455 or the St. Petersburg Laboratory (813) 896-8626



FUR ☒ 9/9
SRQ ☐
LBK ☐
VEN ☒ 9/9

Turtle Permit No.: 028 Observer's Name: BILL SIMMONS PAUL MITCHELL
Affiliation: Mote Marine Laboratory Telephone (inc. area code): (941) 388-4441 or (941) 388-4331

Date of Incident: 3:00 PM - 6:00 PM County: MANASSA

Nearest City/Island: VENICE

Name of Beach: V-U or V-S

Nest Location (inc. street address & nest #): EXACT LOCATION UNKNOWN.

2 NESTS HATCHED RECENTLY - SOUTH OF SHACKLEY'S + THE FISHING PIER.
NO TURTLES VISIBLE.

Disoriented To (inc. street address): SHACKLEY'S RESTAURANT

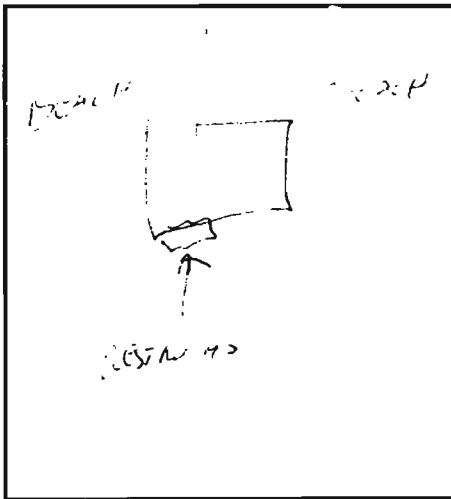
Was a probable lighting source identified? YES / NO

Have there been other disorientation events observed this season at this site? YES (NO)
THESE HAVE BEEN DISORIENTATIONS HERE IN PREVIOUS YEARS.

TYPE OF LIGHT(S) IDENTIFIED:

parking lot street light interior condominium
dune crossover single family home exterior condominium
pier restaurant/bar other: 100% RESTAURANT LIGHTS

Describe lighting source, include number of lights if identified: LIGHTS AT RESTAURANT
+ SHIELD LIGHTS ABOVE RESTROOMS.



PLEASE CIRCLE A RESPONSE:

When was the incident documented? A.M. survey P.M. survey

Was the incident photographed? YES NO

Was the nest located? UNK YES NO

Was the nest excavated? YES NO

Did any hatchlings appear to have reached the water? YES UNK NO

If yes How Many? 2 POSSIBLE

	Loggerhead	Green	Unidentified
Number of Hatchlings Disoriented	<u>6</u>		
Number of Hatchlings Found Dead	<u>0</u>		
Number of Hatchlings Found Alive	<u>6</u>		

SKETCH (Use back if necessary)

Additional comments please elaborate and use back if necessary: FOUND SAND COULD NOT FIND

MISSING HOW MANY HATCHLINGS
DISORIENTED OR ROUTES TAKEN AS TRAPS NOT VISIBLE ON THE COARSE GRAINED
HARD PAPER SAND

Signature of Observer [Signature]

Date 30 AUG 2000

**MARINE TURTLE HATCHLING
DISORIENTATION INCIDENT REPORT FORM**

*If you have any questions please contact the Florida Marine Research Institute at the
Tequesta Field Laboratory (561) 575-5455 or the St. Petersburg Laboratory (813) 896-8626*



FILED ☒ 8/28
SRQ ☐
LBK ☐
VEN ☒ 8/28

Turtle Permit No.: 028 Observer's Name: Verderosa
Affiliation: Mote Marine Laboratory Telephone (inc. area code): (941) 388-4441 or (941) 388-4331

Date of Incident: 8/25/00 County: Sarasota
Nearest City/Island: Venice
Name of Beach: Golden Beach
Nest Location (inc. street address & nest #): Beachcomber - Golden Beach Blvd.

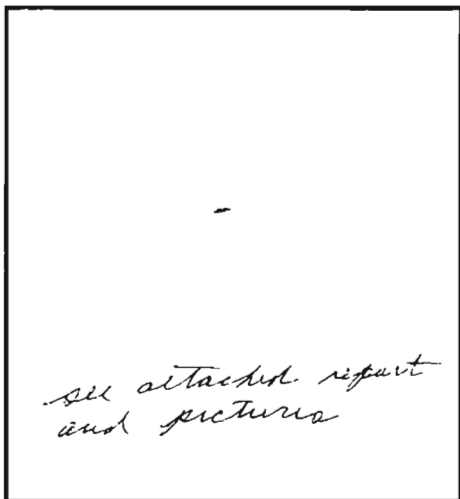
Disoriented To (inc. street address): Golden Beach Blvd. Beachcomber

Was a probable lighting source identified? YES ☒ NO
Have there been other disorientation events observed this season at this site? ☒ YES NO

TYPE OF LIGHT(S) IDENTIFIED:

parking lot	street light	interior condominium
dune crossover	single family home	exterior condominium
pier	restaurant/bar	other: _____

Describe lighting source, include number of lights if identified: Because of electrical storm we did not stay on beach to identify exact lighting. Lights not on at 8:30 P.M., except for tiki hut lights.



PLEASE CIRCLE A RESPONSE:

When was the incident documented? ☒ A.M. survey ☐ P.M. survey
Was the incident photographed? ☒ YES ☐ NO
Was the nest located? ☒ YES ☐ NO
Was the nest excavated? ☐ YES ☐ NO ex. 8/28
Did any hatchlings appear to have reached the water? ☒ YES ☐ NO
If yes How Many? 12-15?

	Loggerhead	Green	Unidentified
Number of Hatchlings Disoriented	25?		
Number of Hatchlings Found Dead			
Number of Hatchlings Found Alive			

SKETCH (Use back if necessary)

Additional comments please elaborate and use back if necessary: _____

Ruth + Fred Verderosa
Signature of Observer

8/26/00
Date

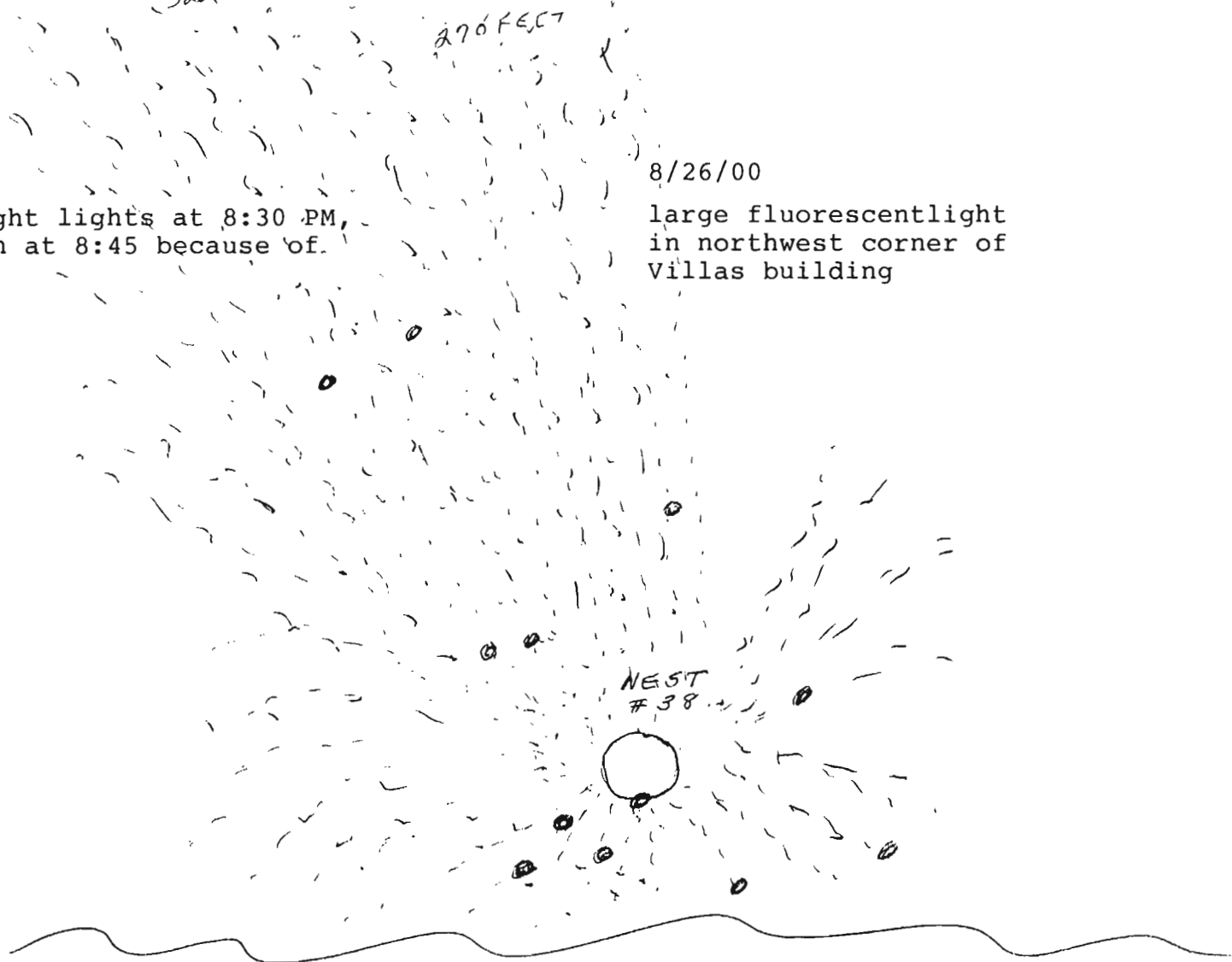


8/25/00

No really bright lights at 8:30 PM,
but left beach at 8:45 because of
storm.

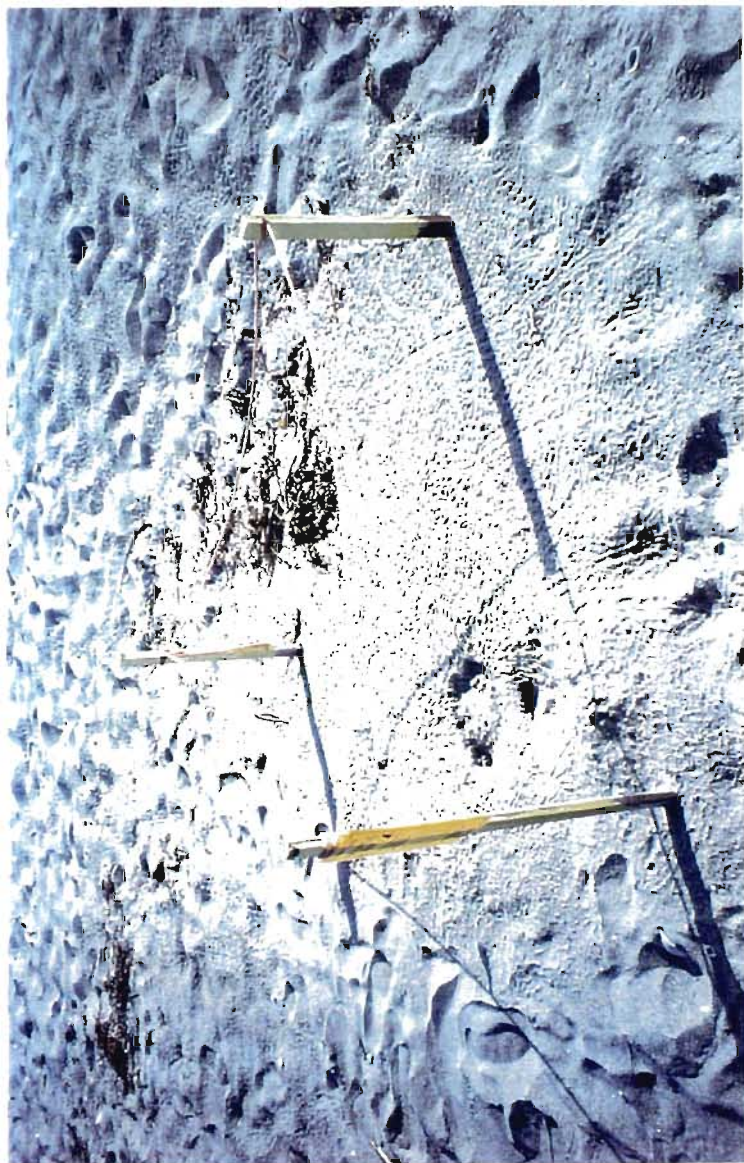
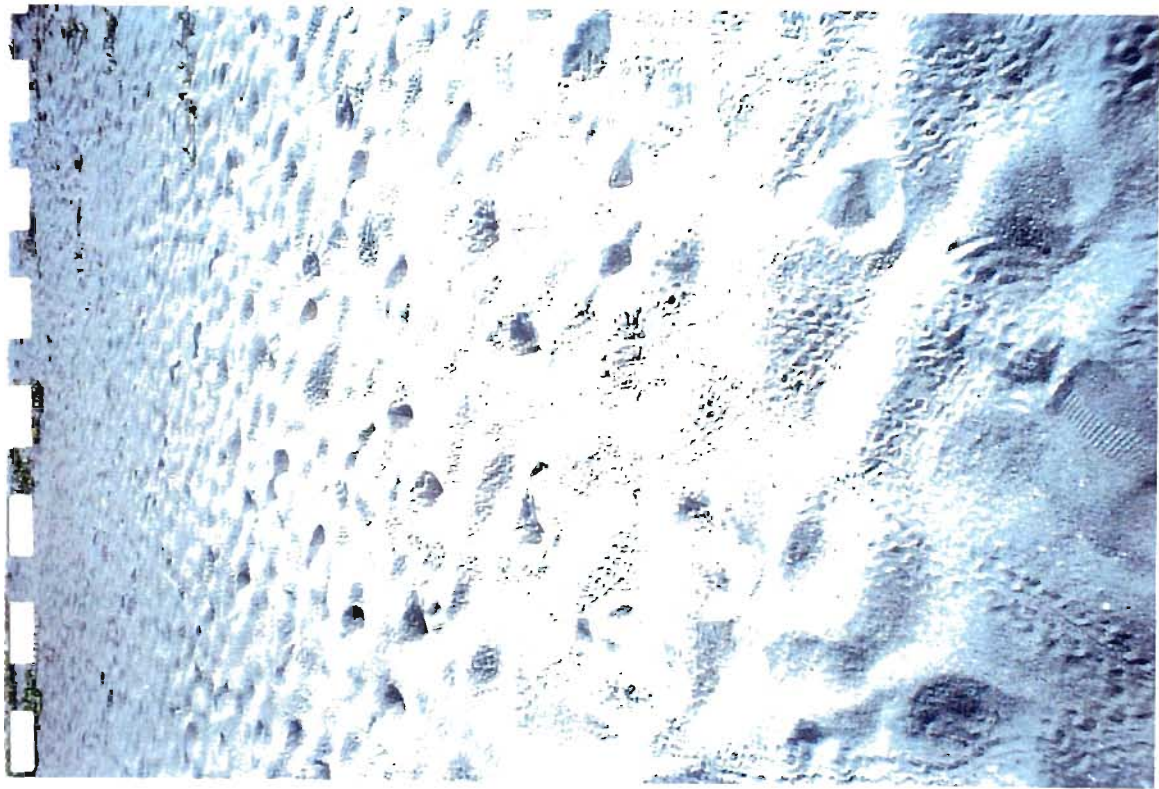
8/26/00

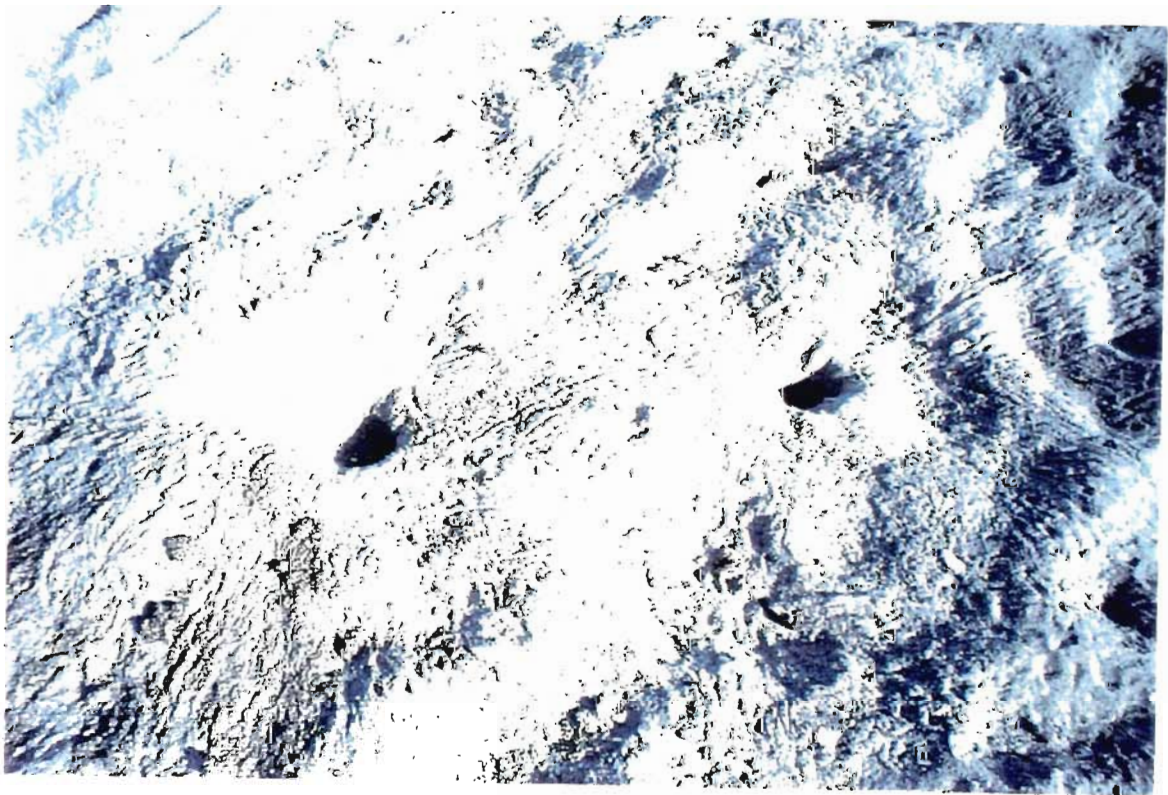
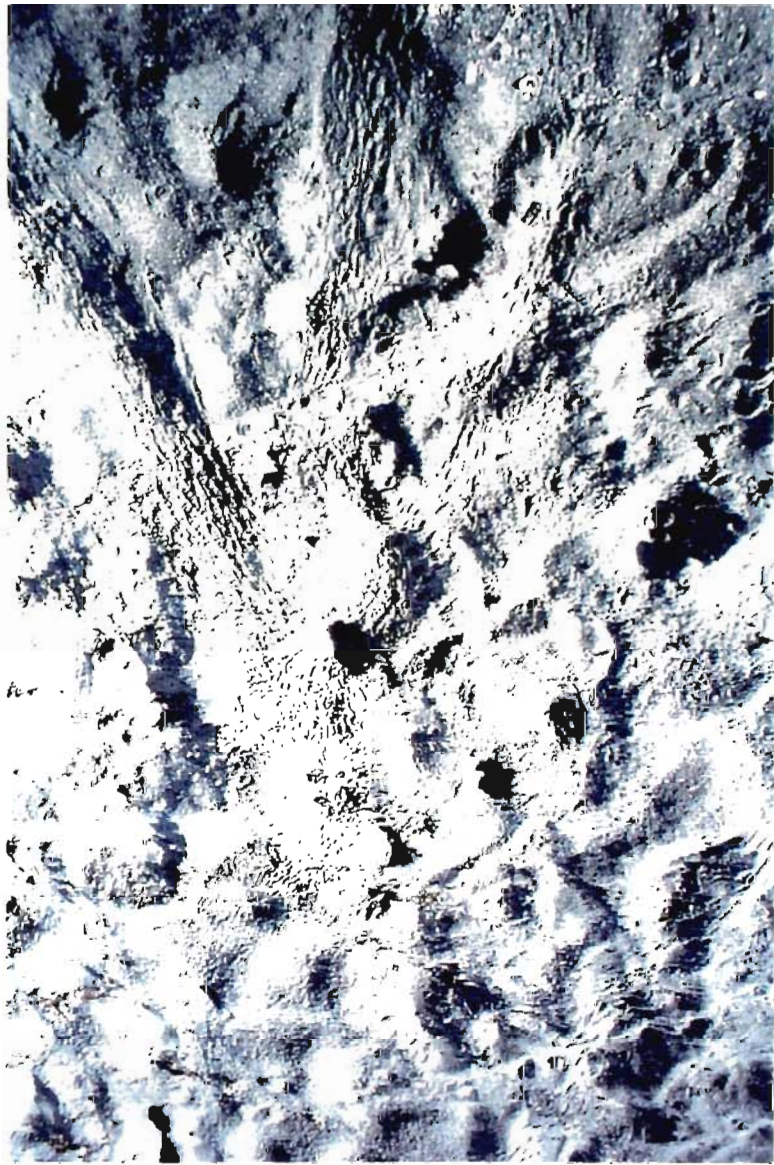
large fluorescent light
in northwest corner of
Villas building



HUGE CRAB HOLES

NAV 941/388-4217





MARINE TURTLE HATCHLING DISORIENTATION INCIDENT REPORT FORM

If you have any questions please contact the Florida Marine Research Institute at the
Tequesta Field Laboratory (561) 575-5455 or the St. Petersburg Laboratory (813) 896-8626



FWCC ✓ 8/22
SRQ ✓
LBK ✓
VEN ✓ 8/22

Turtle Permit No.: 028 Observer's Name: D. Marshall
Affiliation: Mote Marine Laboratory Telephone (inc. area code): (941) 388-4441 or (941) 388-4331

Date of Incident: 8/21/25 County: Volusia

Nearest City/Island: Seaside

Name of Beach: Seaside

Nest Location (inc. street address & nest #): 225 Palm Ln

(1126/25 FLAMINGO) "San Ramon"

Disoriented To (inc. street address): Upward to FLAMINGO (San Ramon)

Tracks followed North to Water SEE BACK of page

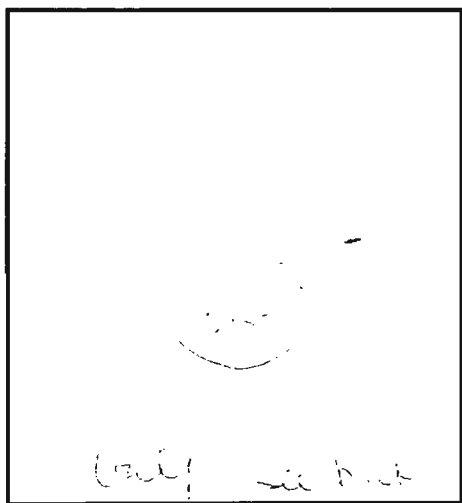
Was a probable lighting source identified? YES NO probable - area to be checked

Have there been other disorientation events observed this season at this site? YES NO mon pm & will call with results on

TYPE OF LIGHT(S) IDENTIFIED:

parking lot street light interior condominium orange family house
dune crossover single family home exterior condominium
pier restaurant/bar other: see attached

Describe lighting source, include number of lights if identified: see attached for 8/21 pm



PLEASE CIRCLE A RESPONSE:

When was the incident documented? A.M. survey P.M. survey
Was the incident photographed? YES NO
Was the nest located? YES NO
Was the nest excavated? YES NO will excavate 8/21 pm
Did any hatchlings appear to have reached the water? YES NO
If yes How Many? 8/5

	Loggerhead	Green	Unidentified
Number of Hatchlings Disoriented	<u>85</u>		
Number of Hatchlings Found Dead	<u>0</u>		
Number of Hatchlings Found Alive	<u>0</u>		

SKETCH (Use back if necessary)

Additional comments please elaborate and use back if necessary: Vegetation checked unable to locate live or dead hatchlings.

D Marshall 8/21/25
Signature of Observer Date

S

WEST

San Ramon
6241 FLAMINGO

ALDAMAR
520 PARK BLVD

P1 SF
CORONAL

SF
CORONAL

SF
HUNTER

SF
HUNTER

SF
HUNTER

4112 Hunter

Tracks ended

N

Subject: Venice Beach Disorientation info

Date: Tue, 22 Aug 2000 10:21:54 -0400

From: "seaturtle123" <seaturtle123@email.msn.com>

To: <jerris@mote.org>

*8/21 disorientation
PM LIGHT CHECK*

Hi Jerris, I could not reach you in your office this a.m. nor could I get a connection to your cell phone #.

Excavation info for V2 6/25 Flamingo nest excavated 8/21 p.m.

4 Live (released successfully)

1 Dead

90 Hatched

17 Unhatched

I also took a quick walk on the beach but had to leave early around 9:15pm due to rain with lots of lightening!

Alhambra all had units with drapes open with lots of light on all floors.

Alhambra(last bldg) south parking lot has many lights visible from the beach which are attached to the roof of the car port over the parking area.

Also, pool lights are still visible there.

Hunter single family had lights on without drapes or blinds closed facing beach.

Cornwall South(Pizza Hut) had large room facing beach with drapes open with light on.

Park Blvd. Aldea Mar North unit had units facing beach with lights on with drapes open.

Park Blvd. Aldea Mar South unit bottom floor south unit with drapes open & lights on from front & side.

Flamingo Island Shores had 2 units facing the beach with lights on & drapes open.

Hope this helps & will keep trying to contact you today if you have any further questions. I will be home if you need to call

Diane Marshall

**MARINE TURTLE HATCHLING
DISORIENTATION INCIDENT REPORT FORM**

If you have any questions please contact the Florida Marine Research Institute at the
Tequesta Field Laboratory (561) 575-5455 or the St. Petersburg Laboratory (813) 896-8626



FDEP ☒ 8/11
SRQ ☐
LBK ☐
VEN ☒ 8/11

Turtle Permit No.: 028 Observer's Name: ANN ROSEQUIST
Affiliation: Mote Marine Laboratory Telephone (inc. area code): (941) 388-4441 or (941) 388-4331

Date of Incident: 8-8-00 County: SARASOTA
Nearest City/Island: VENICE
Name of Beach: VENICE
Nest Location (inc. street address & nest #): SOUTH WALKWAY AT TRASHCAN - PUBLIC BEACH - SOUTH OF PAVILLION

Disoriented To (inc. street address): PAVILLION BATHROOMS + SURROUNDING VEGETATION

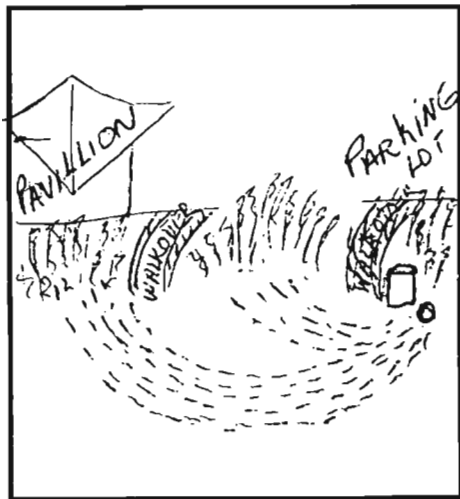
Was a probable lighting source identified? ☒ YES ☐ NO

Have there been other disorientation events observed this season at this site? ☒ YES ☐ NO

TYPE OF LIGHT(S) IDENTIFIED:

parking lot street light interior condominium
dune crossover single family home exterior condominium
pier restaurant/bar other: PUBLIC BATHROOMS + LIGHT ON TOP OF PAVILLION

Describe lighting source, include number of lights if identified: LIGHTS IN BATHROOMS + STREET LIGHT OUT TOP OF PAVILLION



PLEASE CIRCLE A RESPONSE:

When was the incident documented? ☒ A.M. survey ☐ P.M. survey
Was the incident photographed? ☒ YES ☐ NO
Was the nest located? ☒ YES ☐ NO
Was the nest excavated? ☒ YES ☐ NO
Did any hatchlings appear to have reached the water? ☒ YES ☐ NO
If yes How Many? 55 ASSISTED BY POLICE

	Loggerhead	Green	Unidentified
Number of Hatchlings Disoriented	57+		
Number of Hatchlings Found Dead	2		
Number of Hatchlings Found Alive	55		

SKETCH (Use back if necessary)

Additional comments please elaborate and use back if necessary: POLICE CALLED 5:00AM FOUND 51 HATCHLINGS IN BATHROOMS - A FEW MORE IN VEGETATION - 2 DEAD (GHOST CRAB) NEST WAS NOT STAKED -

Signature of Observer: Ann Rosequist Date: 8-8-00

**MARINE TURTLE HATCHLING
DISORIENTATION INCIDENT REPORT FORM**

If you have any questions please contact the Florida Marine Research Institute at the
Tequesta Field Laboratory (561) 575-5455 or the St. Petersburg Laboratory (813) 896-8626



FWCC ☒ 8/7
SRQ ☐
LBK ☐
VEN ☒ 8/7

V20606633/631

V20610627 Alhambra

Turtle Permit No.: 028

Observer's Name: D. Marshall

Affiliation: Mote Marine Laboratory Telephone (inc. area code): (941) 388-4441 or (941) 388-4331

Date of Incident: 8/6/00 County: Sarasota

Nearest City/Island: Venice

Name of Beach: Venice

Nest Location (inc. street address & nest #): Belwin Alhambra

Disoriented To (inc. street address): N to Southern end of V1

Was a probable lighting source identified? YES NO

Have there been other disorientation events observed this season at this site? YES NO

TYPE OF LIGHT(S) IDENTIFIED:

parking lot

street light

interior condominium

dune crossover

single family home

exterior condominium

pier

restaurant/bar

other:

Describe lighting source, include number of lights if identified: exterior light to dead not appropriate - interior lights were probable cause of disorientation

PLEASE CIRCLE A RESPONSE:

When was the incident documented? A.M. survey P.M. survey

Was the incident photographed? YES NO

Was the nest located? YES NO

Was the nest excavated? YES NO

Did any hatchlings appear to have reached the water? YES NO

If yes How Many? 25

	Loggerhead	Green	Unidentified
Number of Hatchlings Disoriented	25		
Number of Hatchlings Found Dead	1		
Number of Hatchlings Found Alive	1		

SKETCH (Use back if necessary)

Additional comments please elaborate and use back if necessary: Was only able to find 2 hatchlings - searched along & under eroded cement wall, vegetation etc without success

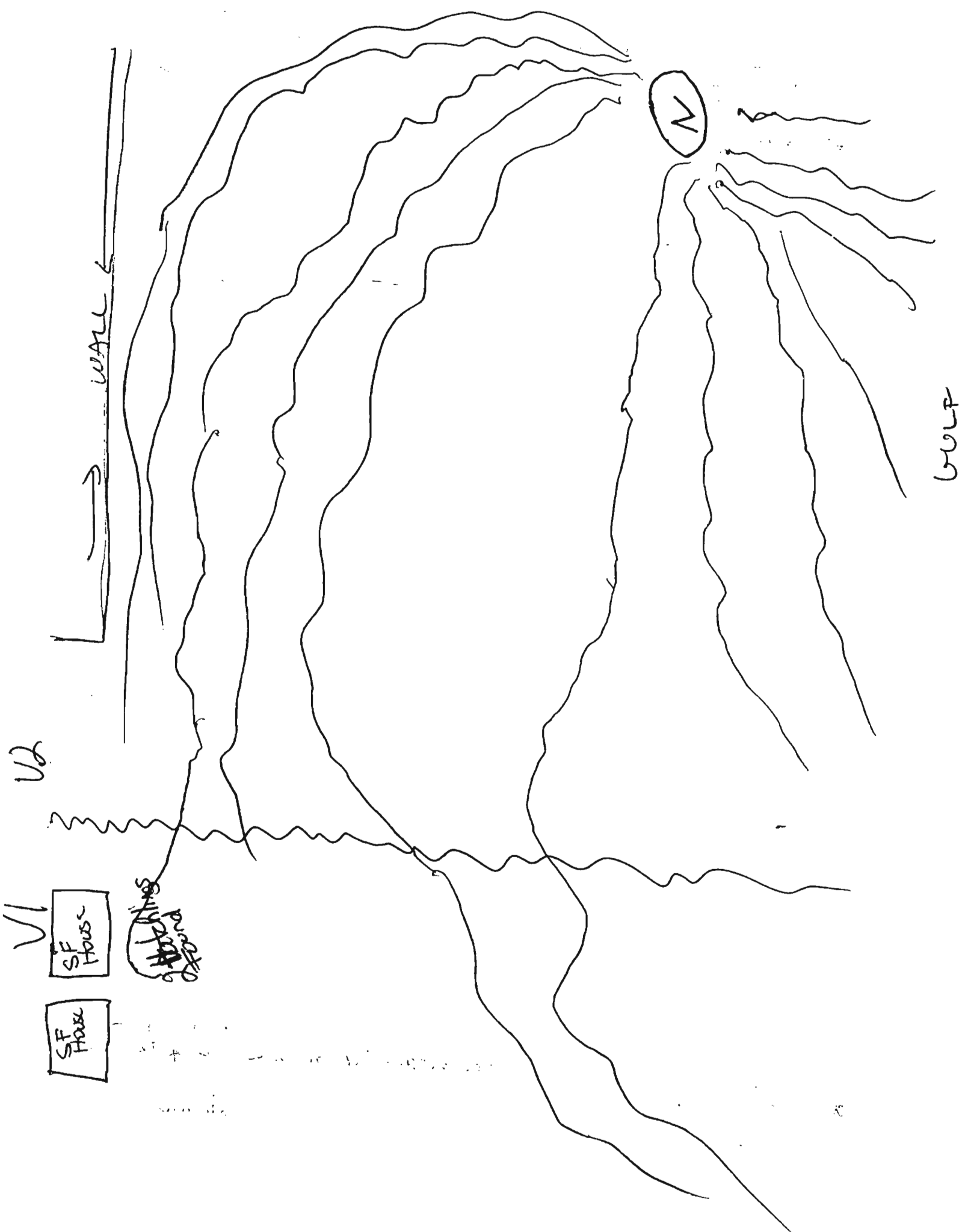
D. Marshall

8/6/00

Signature of Observer

Date

1 Died Same day



MARINE TURTLE HATCHLING DISORIENTATION INCIDENT REPORT FORM

If you have any questions please contact the Florida Marine Research Institute at the
Tequesta Field Laboratory (561) 575-5455 or the St. Petersburg Laboratory (813) 896-8626



FWCC ✓10/18
SRQ
LBK
VEN ✓10/18

Turtle Permit No.: 028 Observer's Name: PARTAK
Affiliation: Mote Marine Laboratory Telephone (inc. area code): (941) 388-4441 or (941) 388-4331

Date of Incident: 7/29 County: SARASOTA
Nearest City/Island: VENICE
Name of Beach: 11

Nest Location (inc. street address & nest #): CORNWALL N
CORNWALL N

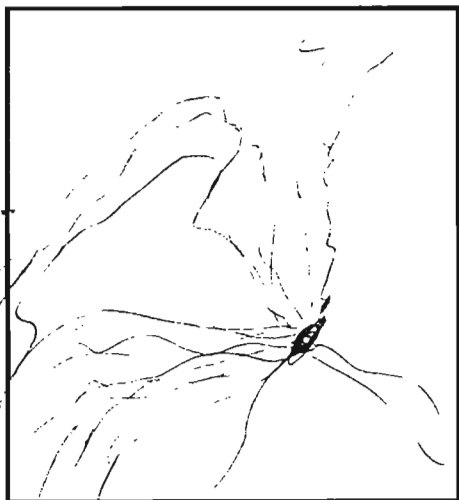
Disoriented To (inc. street address): 11 PLUS HUNTER

Was a probable lighting source identified? YES NO
Have there been other disorientation events observed this season at this site? YES NO

TYPE OF LIGHT(S) IDENTIFIED:

parking lot street light interior condominium
dune crossover single family home exterior condominium
pier restaurant/bar other:

Describe lighting source, include number of lights if identified:



PLEASE CIRCLE A RESPONSE:

When was the incident documented? A.M. survey P.M. survey
Was the incident photographed? YES NO
Was the nest located? YES NO
Was the nest excavated? YES NO
Did any hatchlings appear to have reached the water? YES NO
If yes How Many? 40

	Loggerhead	Green	Unidentified
Number of Hatchlings Disoriented	<u>52 APPROX</u>		
Number of Hatchlings Found Dead	<u>1</u>		
Number of Hatchlings Found Alive	<u>0</u>		

SKETCH (Use back if necessary)

Additional comments please elaborate and use back if necessary: MOST TRACKS LED TO WATER. VEGETATION SEARCHED - ONE DEAD HATCHLING FOUND AT 428 HUNTER IN VEGETATION

Signature of Observer Emil J. [Signature] Date 7/29

MARINE TURTLE HATCHLING DISORIENTATION INCIDENT REPORT FORM

If you have any questions please contact the Florida Marine Research Institute at the
Tequesta Field Laboratory (561) 575-5455 or the St. Petersburg Laboratory (813) 896-8626



FILED 7/27
SRQ
LBK
VEN 7/27

Turtle Permit No.: TP-028 Observer's Name: A. Jacks
Affiliation: Mote Marine Laboratory Telephone (inc. area code): (941) 388-4441 or (941) 388-4331

Date of Incident: 7-27-2000 County: Sarasota

Nearest City/Island: Venice

Name of Beach: Alhambra Beach

Nest Location (inc. street address & nest #): Alhambra JF
Alhambra - section of beach across steps

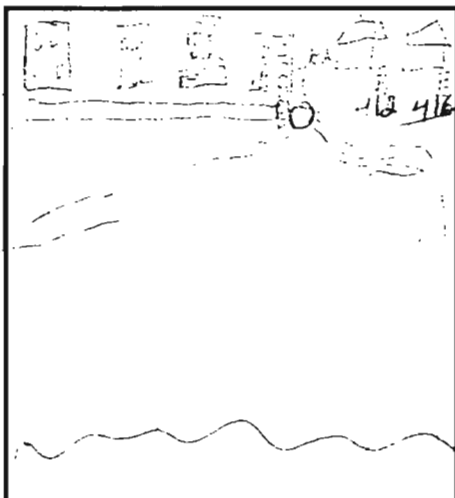
Disoriented To (inc. street address): Hunter or Alhambra

Was a probable lighting source identified? YES ☒ NO needs to be checked at night.
Have there been other disorientation events observed this season at this site? ☒ YES NO

TYPE OF LIGHT(S) IDENTIFIED:

parking lot street light interior condominium possible
dune crossover single family home exterior condominium
pier restaurant/bar other:

Describe lighting source, include number of lights if identified:



PLEASE CIRCLE A RESPONSE:

When was the incident documented? ☒ A.M. survey ☐ P.M. survey
Was the incident photographed? ☒ YES ☐ NO
Was the nest located? ☒ YES ☐ NO
Was the nest excavated? ☒ YES ☐ NO to be excavated 7/30
Did any hatchlings appear to have reached the water? ☒ YES ☐ NO
If yes How Many? ~40

	Loggerhead	Green	Unidentified
Number of Hatchlings Disoriented	<u>40+</u>		
Number of Hatchlings Found Dead	<u>0</u>		
Number of Hatchlings Found Alive	<u>0</u>		

SKETCH (Use back if necessary)

Additional comments, please elaborate and use back if necessary: Some disoriented to the south and some to the north - most tracks migrated towards the water. One report of a visitor finding a hatchling in driveway at 635 Alhambra and releasing into water.

Signature of Observer: [Signature]

Date: 7-27-00

MARINE TURTLE HATCHLING DISORIENTATION INCIDENT REPORT FORM

If you have any questions please contact the Florida Marine Research Institute at the
Tequesta Field Laboratory (561) 575-5455 or the St. Petersburg Laboratory (813) 896-8626



FDEP 7/24
SRQ 7/24
LBK
VEN

Turtle Permit No. 028 Observer's Name: Verderosa
Affiliation: Mote Marine Laboratory Telephone (inc. area code): (941) 388-4441 or (941) 388-4331

Date of Incident: 7/22/00 County: Sarasota
Nearest City/Island: Venice
Name of Beach: Golden Beach
Nest Location (inc. street address & nest #): Golden Beach Blvd. NEST #13

Disoriented To (inc. street address): Golden Beach Blvd. Beachcomber Motel

Was a probable lighting source identified? YES NO
Have there been other disorientation events observed this season at this site? YES NO

TYPE OF LIGHT(S) IDENTIFIED:

parking lot street light interior condominium
dune crossover single family home exterior condominium
pier restaurant/bar other: _____

Describe lighting source, include number of lights if identified: Inside from condos (no curtains drawn) outside lights on porches and around grounds

SEE BACK OF PAGE

PLEASE CIRCLE A RESPONSE:

When was the incident documented? A.M. survey P.M. survey
Was the incident photographed? YES NO
Was the nest located? YES NO
Was the nest excavated? YES NO
Did any hatchlings appear to have reached the water? YES NO
If yes How Many? 20?

	Loggerhead	Green	Unidentified
Number of Hatchlings Disoriented	60?		
Number of Hatchlings Found Dead	0		
Number of Hatchlings Found Alive	0		

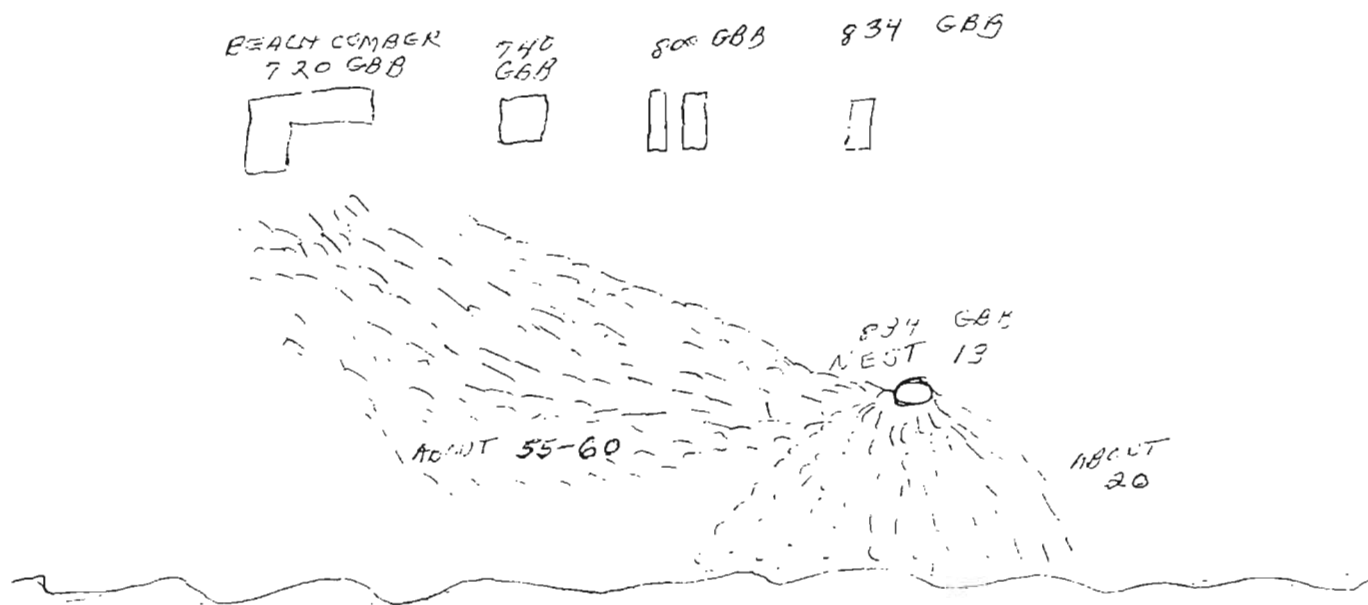
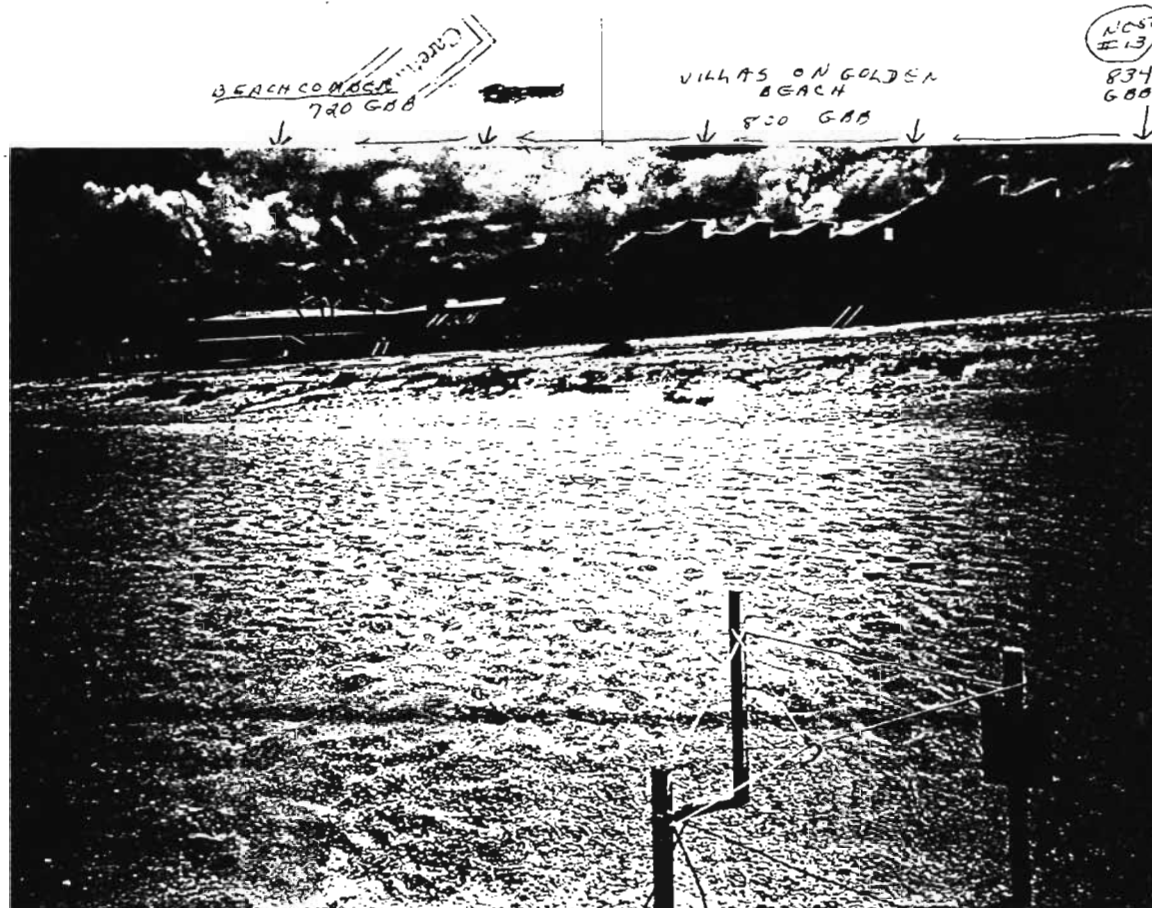
SKETCH (Use back if necessary)

Additional comments please elaborate and use back if necessary: Hatchlings by-passed 3 other buildings and headed straight toward lights at the Beachcomber. We followed tracks 400-500 feet along middle part of beach and saw them turn up toward the Beachcomber. Most disappeared down the numerous crab holes between nest and the grass.

Signature of Observer

F.J. Verderosa
And Verderosa

7/23/00 Date



We followed tracks into the vegetation and grass at edge of Beachcomber property. We did not find any live or dead hatchlings. Huge crab holes over beach, and most tracks ended there.

MARINE TURTLE HATCHLING DISORIENTATION INCIDENT REPORT FORM

If you have any questions please contact the Florida Marine Research Institute at the
Tequesta Field Laboratory (561) 575-5455 or the St. Petersburg Laboratory (813) 896-8626



FDEP ☒ 7/18
SRQ ☐
LBK ☐
VEN ☒ 7/18

Turtle Permit No.: TP#028 Observer's Name: ANN ROSEQUIST
Affiliation: Mote Marine Laboratory Telephone (inc. area code): (941) 388-4441 or (941) 388-4331

Date of Incident: 7-14-00 County: SARASOTA
Nearest City/Island: VENICE
Name of Beach: VENICE
Nest Location (inc. street address & nest #): #9 GULF HORIZONS ESPLANADE

Disoriented To (inc. street address): SOME WENT NORTH BUT STAYED BELOW ESCARP. SEVERAL WENT TO TWIN TOWERS LOT + WALKWAY

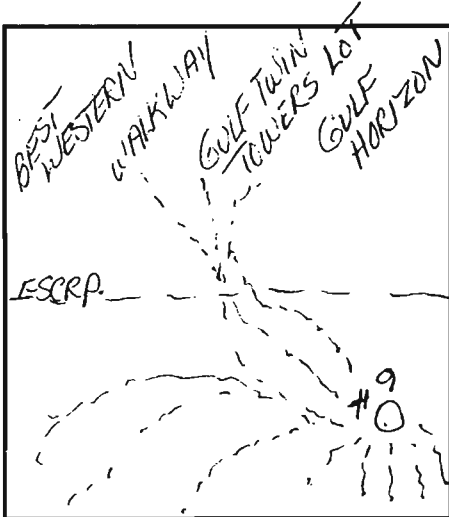
Was a probable lighting source identified? YES NO

Have there been other disorientation events observed this season at this site? YES NO
TWO CONDOS DOWN TO GULF SHORES.

TYPE OF LIGHT(S) IDENTIFIED:

parking lot street light interior condominium
dune crossover single family home exterior condominium
pier restaurant/bar other: _____

Describe lighting source, include number of lights if identified: _____



PLEASE CIRCLE A RESPONSE:

When was the incident documented? A.M. survey P.M. survey
Was the incident photographed? YES NO
Was the nest located? YES NO
Was the nest excavated? YES NO
Did any hatchlings appear to have reached the water? YES NO
If yes How many? MAYBE 4

	Loggerhead	Green	Unidentified
Number of Hatchlings Disoriented	<u>10</u>		
Number of Hatchlings Found Dead	<u>0</u>		
Number of Hatchlings Found Alive	<u>6</u>		

SKETCH (Use back if necessary)

Additional comments please elaborate and use back if necessary: _____

Ann Cetty Rosequist
Signature of Observer

7-14-00
Date

MARINE TURTLE HATCHLING DISORIENTATION INCIDENT REPORT FORM

If you have any questions please contact the Florida Marine Research Institute at the
Tequesta Field Laboratory (561) 575-5455 or the St. Petersburg Laboratory (813) 896-8626



FWCC ☒ 7/11
SRQ ☐
LBK ☐
VEN ☒ 7/11

Turtle Permit No.: 048 Observer's Name: PAETAK
Affiliation: Mote Marine Laboratory Telephone (inc. area code): (941) 388-4441 or (941) 388-4331

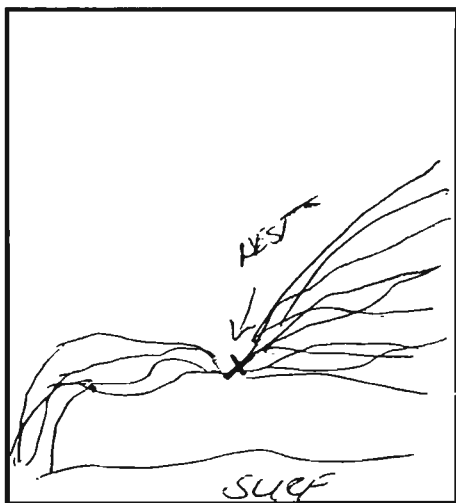
Date of Incident: 7/8/00 County: SARASOTA
Nearest City/Island: VENICE
Name of Beach: VENICE
Nest Location (inc. street address & nest #): HUNTER
NEST # 5/17 EP

Disoriented To (inc. street address): N AND S. SOME HATCHLING TRACKS
DISAPPEARED IN VEGETATION AT CORNUAL ON THE GULF.
Was a probable lighting source identified? YES ☒ NO ☒ SURVEYED IN AM. NEED
TO CHECK IN P.M.
Have there been other disorientation events observed this season at this site? YES ☒ NO ☐

TYPE OF LIGHT(S) IDENTIFIED:

possible
parking lot street light interior condominium
dune crossover single family home exterior condominium
pier restaurant/bar other: _____

Describe lighting source, include number of lights if identified: SEE ATTACHED LIST OF
LIGHTS OBSERVED ON 7/9 SURVEY.



PLEASE CIRCLE A RESPONSE:

When was the incident documented? A.M. survey ☒ P.M. survey ☐
Was the incident photographed? YES ☒ NO ☐
Was the nest located? YES ☒ NO ☐
Was the nest excavated? YES ☒ NO ☐ TO BE
EXCAVATED
Did any hatchlings appear to have reached the water? YES ☒ NO ☐ 7/11
If yes How Many? 20

	Loggerhead	Green	Unidentified
Number of Hatchlings Disoriented	25+		
Number of Hatchlings Found Dead	0		
Number of Hatchlings Found Alive	2		

SKETCH (Use back if necessary)

Additional comments please elaborate and use back if necessary: FISHERMAN FOUND 2
HATCHLINGS AT 6:00 & PUT IN GULF. HATCHLINGS MOVING N
OF NEST TURNED & WENT TO WATER WITHIN 50 YDS OF NEST
MAJORITY OF TRACKS HEADING S - DISAPPEARED IN VEGETATION ON GULF COAST
HOUS.
know to take as per FAX & phone
Signature of Observer Concepcion M. T. /
Emil Portak Date 7/11/00

SECURE BY
JERRIS FOSTER
& TERRY MURPHY
PM 7/29/00

bottom fixtures and fixtures with 4 lights. The parking lot lights are visible from the south end of Venice Public Beach. These lights need to be shielded.

Ocala Street Open bottom (or cobra light?) needs to be shielded or replaced - is this FPL?

Venice Zone 2 (Alhambra - Villas Dr.):
Street light Cobra fixture at the intersection of Castille St. and Valencia Rd needs to be shielded.

Alhambra cobra fixture SE of bldg - street light? (behind Venice Sands)

Alhambra shadows on the beach seaward of Valencia buildings - possibly from interior lights. SE corner of southern building and behind N building - high pressure sodium pole lights need to be shielded. Don't know if these are FPL fixtures or private.

Cornwall on the Gulf - North end Fluorescent fixtures inside house illuminate beach

Park Blvd covered parking lot lights north of pool - visible from south. Bright white lights around pool area need to be shielded or turned off. North bldg, center stairway: canister lights should be tilted east; bright white 1st floor light needs to be replaced with amber light

Flamingo amber bulb over doorway on 1st floor, center of bldg (wattage needs to be reduced)

Villas Drive bright white pole light (FPL light?) At SW corner, Directional pole light located east of Venice Villas

Venice Zone 3 (Golden Beach Blvd. - Sunset Drive):
streetlight HPS streetlight located SE of Venice Villas (behind MacArthur Beach)

Golden Beach Blvd cobra fixture at south end (street or parking lot?) 2 covered parking areas - 9 or more exposed lights, bright amber bulb in 2nd floor stairway (bldg just North of pool). Globe light South of N bldg needs bigger shield, Globe light directly east of pool needs shield

**MARINE TURTLE HATCHLING
DISORIENTATION INCIDENT REPORT FORM**

If you have any questions please contact the Florida Marine Research Institute at the
Tequesta Field Laboratory (561) 575-5455 or the St. Petersburg Laboratory (813) 896-8626



FUEL ☒ 7/10
SRQ ☐
LBK ☐
VEN ☒ 7/10

Turtle Permit No.: #028 Observer's Name: ANNA ROSEQUIST
Affiliation: Mote Marine Laboratory Telephone (inc. area code): (941) 388-4441 or (941) 388-4331

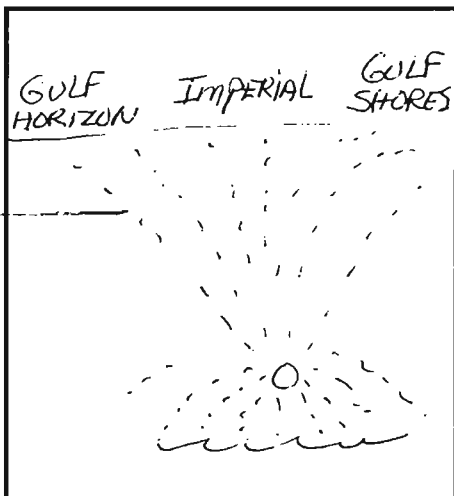
Date of Incident: 7-6-00 County: SARASOTA
Nearest City/Island: VENICE
Name of Beach: VENICE ZONE 1
Nest Location (inc. street address & nest #): GULF SHORES
ESPLANADE

Disoriented To (inc. street address): GULF SHORES - IMPERIAL HOUSE - GULF
HORIZON ESPLANADE ESPLANADE ESPLANADE
Was a probable lighting source identified? YES NO
Have there been other disorientation events observed this season at this site? YES NO

TYPE OF LIGHT(S) IDENTIFIED:

parking lot street light interior condominium
dune crossover single family home exterior condominium
pier restaurant/bar other: parking garage lights
sign

Describe lighting source, include number of lights if identified: see attached lighting
inspection information for this area. The attached has
submitted to Harry Hoff of Venice. 7/10/00



PLEASE CIRCLE A RESPONSE:

When was the incident documented? A.M. survey P.M. survey
Was the incident photographed? YES NO
Was the nest located? YES NO
Was the nest excavated? YES NO
Did any hatchlings appear to have reached the water? YES NO
If yes How Many? _____

	Loggerhead	Green	Unidentified
Number of Hatchlings Disoriented	<u>20</u>		
Number of Hatchlings Found Dead			
Number of Hatchlings Found Alive	<u>2</u>		

SKETCH (Use back if necessary)

Additional comments please elaborate and use back if necessary: 1. HATCHLING FOUND AT
Ocala - ANOTHER AT GULF HORIZON PARKING LOT

Anna Rosequist
Signature of Observer

7-6-00

Date

VENICE ZONE 1 (Tarpon Center Dr. - Outfall #2)

Lights observed by Jerris Foote and Tracey Mueller 7/29/00

ADDRESS:

LIGHTS OBSERVED:

Tarpon Center Dr	south side of globe lights need to be painted, lights reflecting off windows
TCD	globe light and bright amber light on building can be seen from south end of beach, Globe lights seaward of bldg need to be painted on south side, Globe lights on stairway need repainting
TCD	2 white lights on fence/ entryway
TCD	bright interior lights, Chandelier in North apartment
TCD	2 white lights on North side (need to be shielded to west)
TCD	3 pole fixtures visible (very bright) from North
Bayside/ Freedom Boat Club	2 bright white lights and amber light on west side of bldg
Esplanade	white portion of sign needs to be turned off or shielded
(There are shadows on the beach between and Esplanade caused by a combination of the white portion of the Best Western sign, and the lights on the west side of Esplanade)	
Esplanade	white lights over entryway
Esplanade	parking garage lights need to be replaced
Esplanade	redirect or shield amber lights at entryway, light in parking area at North end of bldg needs to be redirected East

Venice Public Beach: is lighted by a combination of lights including **cobra streetlights lining both the north and south sides of Venice Ave.** It would be beneficial if the streetlights could be changed out to cobra “cut-off” fixtures over time. The **Inn at the Beach** has canister lights over entryways but the cumulative effect is to light up the building. It would be beneficial if the lights were replaced with lower wattage amber lights that would cause less reflection. The **single story apartment/condominium on the north side of Venice Ave** has carriage type lights along the south property line and at the west facing building. The wattage needs to be reduced and the lights need to be shielded on the west and south sides.

The lights from the parking lot at Granada (Golden Strand) are open

bottom fixtures and fixtures with 4 lights. The parking lot lights are visible from the south end of Venice Public Beach. These lights need to be shielded.

Ocala Street Open bottom (or cobra light?) needs to be shielded or replaced - is this FPL?

Venice Zone 2 (Alhambra - Villas Dr.):
Street light Cobra fixture at the intersection of Castille St. and Valencia Rd needs to be shielded.

Alhambra cobra fixture SE of bldg - street light? (behind Venice Sands)

Alhambra shadows on the beach seaward of Valencia buildings - possibly from interior lights. SE corner of southern building and behind N building - high pressure sodium pole lights need to be shielded. Don't know if these are FPL fixtures or private.

Cornwall on the Gulf - North end Flourescent fixtures inside house illuminate beach

Park Blvd covered parking lot lights north of pool - visible from south. Bright white lights around pool area need to be shielded or turned off. North bldg, center stairway: canister lights should be tilted east; bright white 1st floor light needs to be replaced with amber light

Flamingo amber bulb over doorway on 1st floor, center of bldg (wattage needs to be reduced)

Villas Drive bright white pole light (FPL light?) At SW corner, Directional pole light located east of Venice Villas

Venice Zone 3 (Golden Beach Blvd. - Sunset Drive):
streetlight HPS streetlight located SE of Venice Villas (behind MacArthur Beach)

Golden Beach Blvd cobra fixture at south end (street or parking lot?) 2 covered parking areas - 9 or more exposed lights, bright amber bulb in 2nd floor stairway (bldg just North of pool). Globe light South of N bldg needs bigger shield, Globe light directly east of pool needs shield

- GBB Bright white bulb in 2nd floor hallway (center of 3 story bldg) - needs an amber light similar to the one on the 3rd floor. carriage lights between bldgs need to be shielded.
- GBB carriage lights on concrete wall on south property boundary - need to be shielded to the S,W, and North
- GBB bright parking lot light at south end needs to be repainted, shadows on beach from light
- GBB bright interior lights (flourescent fixtures in kitchen?) - pull blinds
- Sunset Drive clustered globe lights at NW corner of pool - 2 lights ON - lights need to be off or shielded

**MARINE TURTLE HATCHLING
DISORIENTATION INCIDENT REPORT FORM**

*If you have any questions please contact the Florida Marine Research Institute at the
Tequesta Field Laboratory (561) 575-5455 or the St. Petersburg Laboratory (813) 896-8626*



FDEP ☒
SRQ ☐
LBK ☐
VEN ☒

Turtle Permit No.: TP #028 Observer's Name: Verderosa
Affiliation: Mote Marine Laboratory Telephone (inc. area code): (941) 388-4441 or (941) 388-4331

Date of Incident: 6/29-30/00 County: Sarasota
Nearest City/Island: Venice
Name of Beach: Gulf Shores Beach
Nest Location (inc. street address & nest #): Sunset Drive NEST #2

Disoriented To (inc. street address): beach and grass in area around Sunset Dr.
& Sunset Drive (LIGHT WAS ON POOL CAGE - INSIDE CORNER TOWARD BEACH)
Was a probable lighting source identified? ☒ YES ☐ NO
Have there been other disorientation events observed this season at this site? YES ☐ NO ☒

TYPE OF LIGHT(S) IDENTIFIED:

parking lot
dune crossover
pier
street light
single family home
restaurant/bar
interior condominium
exterior condominium
other: _____

Describe lighting source, include number of lights if identified: one 3-globed old-fashioned type street light inside poolcage. Light was in corner closest to the beach. also bright lamp inside house facing pool and beach
(Sunset dr.)



PLEASE CIRCLE A RESPONSE:

When was the incident documented? A.M. survey ☒ P.M. survey ☐
Was the incident photographed? YES ☐ NO ☒
Was the nest located? YES ☒ NO ☐
Was the nest excavated? YES ☒ NO ☐
Did any hatchlings appear to have reached the water? YES ☒ NO ☐
If yes How Many? about 75

	Loggerhead	Green	Unidentified
Number of Hatchlings Disoriented	20?		
Number of Hatchlings Found Dead	2		
Number of Hatchlings Found Alive	1		

(over)
SKETCH (Use back if necessary)

Additional comments please elaborate and use back if necessary: _____

Fred & Ruth Verderosa
Signature of Observer

6/29/00
Date

200' 100' 50' 25'
1700 1720 1740
SUNSET DR
100' 150' 200' 250'
100' 150' 200' 250'

DEAD TURTLE
IN GRASS

LIVE
TURTLE
IN GRASS

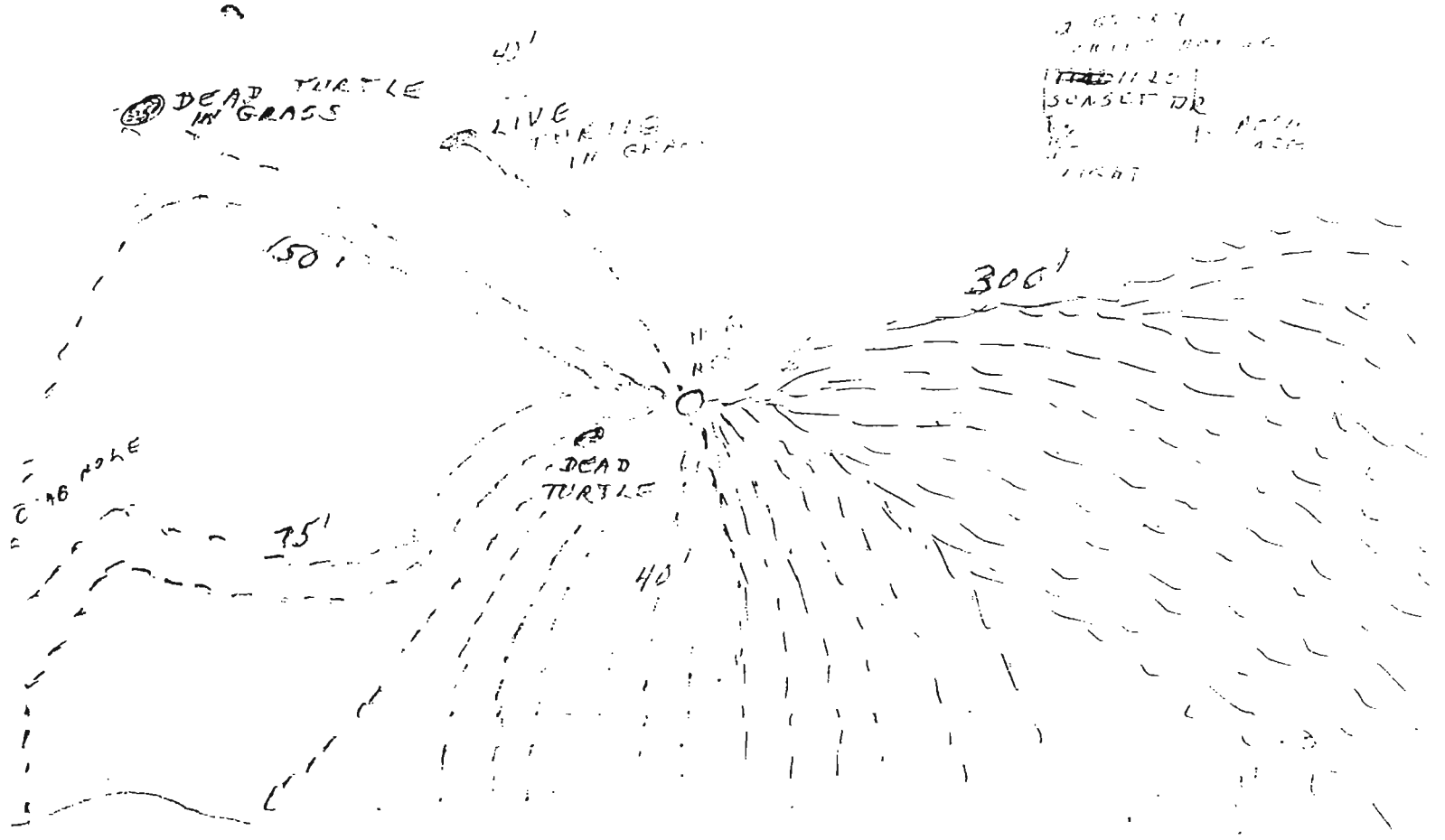
DEAD
TURTLE

100' 150' 200' 250'

75'

40'

300'



Appendix F

SEA TURTLE STRANDING AND SALVAGE NETWORK - STRANDING REPORT

PLEASE PRINT CLEARLY AND FILL IN ALL APPLICABLE BLANKS. Use codes below. Measurements may be straight line (caliper) and/or over the curve (tape measure). Measure length from the center of the nuchal notch to the tip of the most posterior marginal. Measure width at the widest point of carapace. **CIRCLE THE UNITS USED.** See diagram below. Please give a specific location description. **INCLUDE LATITUDE AND LONGITUDE.**

Observer's Full Name Jerris J. Foote, Amanda P. Jaksha, Chuck B. Cooper Stranding Date 6-6-00
year month day

Address / Affiliation 1600 Ken Thompson Parkway, Mote Marine Lab

Area Code / Phone Number (941) 388-4331

Species CC Turtle Number By Day 01

Reliability of I.D.: (CIRCLE) Positive Unsure Probable Species Verified by State Coordinator? Yes ☐ No ☒

Sex: (CIRCLE) Female Male Undetermined How was sex determined? visual, tail not extended beyond carapace

State FL County Sarasota

Location (be specific and include closest town) GULF SIDE, VENICE PUBLIC BEACH

across from The Esplanade, S. of S. Lifeguard House

Latitude N. 27° 05.7406 Longitude W 82° 27.8041

Condition of Turtle (use codes) 3 Final Disposition of Turtle (use codes) 2

Tag Number(s) (include tag return address and disposition of tag) no evidence of tag / external tag scars.

Remarks (note if turtle was involved with tar or oil, gear or debris entanglement, wounds or mutilations, propellor damage, papillomas, epizoa, etc.) continue on back if necessary no evidence of tag/tag scars, mouth is clear
turtle extremely bloated, keratin on carapace popping off
laceration on carapace (28cm in length), center of
vertebral scutes: 1st anterior → 3rd scute → 29cm, 3rd laceration

MEASUREMENTS: CIRCLE UNITS

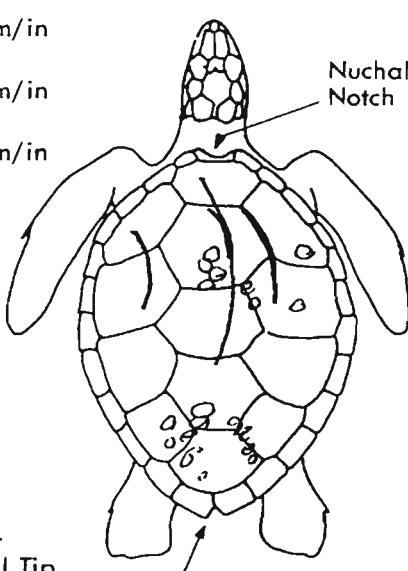
*Straight Length 82.1 (NN) 83.4 (NT) cm/cm, i.e.

*Straight Width 61.8 cm cm/in

Curved Length 89.5 cm cm/in
NN 91.7 cm

Curved Width 83.0 cm cm/in
over 2 barnacles

Mark wounds, abnormalities, and tag locations



Nuchal Notch

Posterior Marginal Tip

CODES: on left upper

SPECIES:

CC = Loggerhead (11.5 cm length)

CM = Green moderate amt.

DC = Leatherback of barnacles

EI = Hawksbill soft tissue

LK = Kemp's ridley (size ≈ 2-4mm)

UN = Unidentified

CONDITION OF TURTLE: numerous

0 = Alive superficial str.

1 = Fresh dead on basal scute

2 = Moderately decomposed

3 = Severely decomposed

4 = Dried carcass carapace

5 = Skeleton, bones only clean w/ moderate

FINAL DISPOSITION OF TURTLE: barnacle

1 = Painted, left on beach cover

2 = Buried: on beach / off beach (2 1/2 - 7m)

3 = Salvaged specimen: all / part

4 = Pulled up on beach or dune

5 = Unpainted, left on beach in size

6 = Alive, released

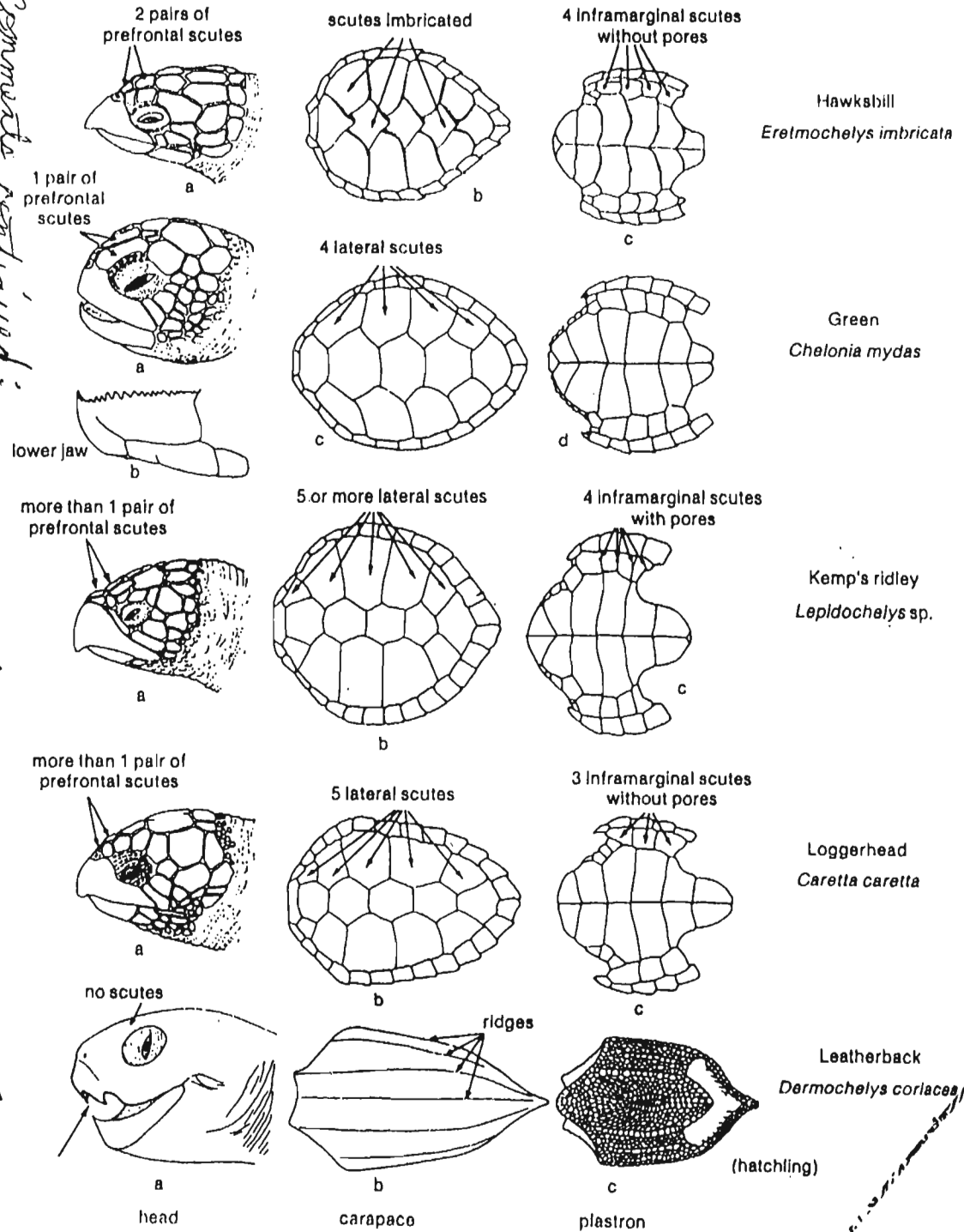
7 = Alive, taken to a holding facility

PICTURE GUIDE TO SPECIES OCCURRING IN THE AREA

Cemurata centuried:
plastron partially decomposed, but nothing unusual
** muscle sample taken for genetic analysis*

PLEASE FAX TO (561)743-6228, THEN PLEASE USE AN
 ENVELOPE AND MAIL ORIGINAL FORM TO:

FLORIDA STSSN COORDINATOR
 FLORIDA FISH & WILDLIFE CONSERVATION COMMISSION
 FLORIDA MARINE RESEARCH INSTITUTE
 19100 S.E. FEDERAL HIGHWAY
 TEQUESTA, FL 33469





SEA TURTLE STRANDING AND SALVAGE NETWORK - STRANDING REPORT

PLEASE PRINT CLEARLY AND FILL IN ALL APPLICABLE BLANKS. Use codes below. Measurements may be straight line (caliper) and/or over the curve (tape measure). Measure length from the center of the nuchal notch to the tip of the most posterior marginal. Measure width at the widest point of carapace. CIRCLE THE UNITS USED. See diagram below. Please give a specific location description. INCLUDE LATITUDE AND LONGITUDE.

Observer's Full Name JERRIS J. FOOTE Stranding Date 00-07-06
year month day

Address / Affiliation NOTE MARINE LABORATORY, 1600 KEUTHOMPSAN PKWY.
SARASOTA, FL. 34236

Area Code / Phone Number 941/388-4331 on 941/

Species CC Turtle Number By Day 01

Reliability of I.D.: (CIRCLE) Unsure Probable Positive Species Verified by State Coordinator? Yes ☐ No ☒

Sex: (CIRCLE) Female Male Undetermined How was sex determined? _____

State FLORIDA County SARASOTA

Location (be specific and include closest town) GULF SIDE, GOLF BEACH BLVD.

VENICE, FLORIDA, APPROXIMATELY MILE 125, 1.9 MILES S OF
VENICE INLET

Latitude 27° 05.02' N Longitude 82° 27.34' W

Condition of Turtle (use codes) 02 Final Disposition of Turtle (use codes) 02

Tag Number(s) (include tag return address and disposition of tag) no tag or tag not on LEFT

front flipper

Remarks (note if turtle was involved with tar or oil, gear or debris entanglement, wounds or mutilations, propellor damage, papillomas, epizoa, etc.) continue on back if necessary

PROPELLOR CUTS THROUGH CARAPACE (SEE BELOW), MAJORITY OF VERTICAL SCUTES

MISSING; R. FRONT REAR FLIPPER MISSING. FEW SMALL BARNACLES (2-3mm)

ON REMAINING SKIN TISSUE, CARAPACE REMAINS CLAMPED WITH ONE BARNACLE ON

MEASUREMENTS: CIRCLE UNITS

Straight Length _____ cm/in

Straight Width _____ cm/in

Curved Length APPROXIMATELY 91.8 cm/in

Curved Width _____ cm/in

PLASTON LENGTH 64.00m

PLASTON WIDTH APPROX. 58.3 cm

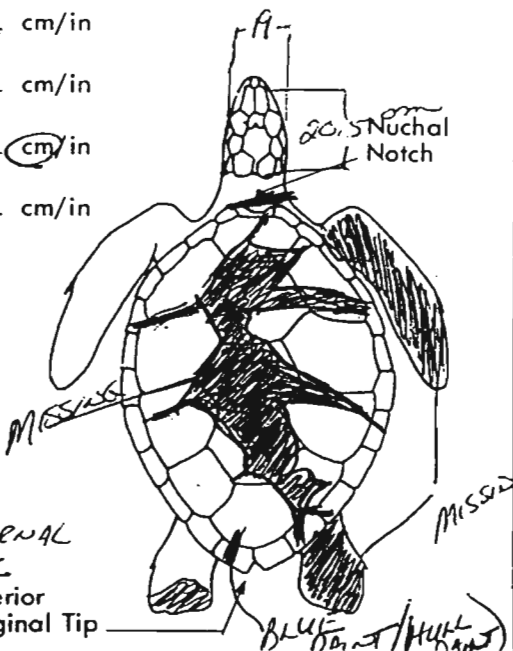
Mark wounds, abnormalities, and tag locations

HEAD WIDTH = 19 cm

HEAD LENGTH FROM EXTERNAL NARIS TO POSTERIOR MARGINAL TIP

PACIFIC = 20.5 cm

Posterior Marginal Tip



CODES: (CIRCLE)

SPECIES:

- CC Loggerhead
- CM = Green
- DC = Leatherback
- EI = Hawksbill
- LK = Kemp's ridley
- UN = Unidentified

CONDITION OF TURTLE:

- 0 = Alive
- 1 = Fresh dead
- 2 = Moderately decomposed
- 3 = Severely decomposed
- 4 = Dried carcass
- 5 = Skeleton, bones only

FINAL DISPOSITION OF TURTLE:

- 1 = Painted, left on beach
- 2 = Buried: on beach / off beach
- 3 = Salvaged specimen: all / part
- 4 = Pulled up on beach or dune
- 5 = Unpainted, left on beach
- 6 = Alive, released
- 7 = Alive, taken to a holding facility

